

BIROn - Birkbeck Institutional Research Online

Hough, Mike and Sato, M. (2011) Trust in justice: why it is important for criminal policy, and how it can be measured. Project Report. Euro-Justis Project, Helsinki, Finland.

Downloaded from: <http://eprints.bbk.ac.uk/4507/>

Usage Guidelines:

Please refer to usage guidelines at <http://eprints.bbk.ac.uk/policies.html>
contact lib-eprints@bbk.ac.uk.

or alternatively



BIROn - Birkbeck Institutional Research Online

Enabling open access to Birkbeck's published research output

Trust in justice: why it is important for criminal policy,
and how it can be measured

Project Report (Published draft)

<http://eprints.bbk.ac.uk/4507>

Citation:

Hough, M.; Sato, M. (2011) Trust in justice: why it is important for
criminal policy, and how it can be measured
Final Report of the Euro-Justis Project, European Institute for Crime
Prevention and Control

© 2011 The Euro-Justis Project

[Publisher version](#)

All articles available through Birkbeck ePrints are protected by intellectual property law, including
copyright law. Any use made of the contents should comply with the relevant law.

[Deposit Guide](#)

Contact: lib-eprints@bbk.ac.uk

European Institute for
Crime Prevention and Control,
affiliated with the United Nations
(HEUNI)
P.O.Box 444
FIN-00531 Helsinki
Finland

Publication Series No. 70

Trust in justice: why it is important for criminal policy, and how it can be measured

Final report of the Euro-Justis project

Editors Mike Hough and Mai Sato

Institute for Criminal Policy Research
Birkbeck, University of London
June 2011

Helsinki 2011

This book has been published thanks to the support of the European Commission, Directorate-General for Research, 7th Framework Programme for Research – Socio-economic Sciences and Humanities (grant agreement no. 217311).

The information and views set out in this report are those of the authors and do not necessarily reflect the official opinion of the European Communities. Neither the European Communities institutions and bodies nor any person acting on their behalf may be held responsible for the use which may be made of the information contained therein.

Copies can be purchased from:

Academic Bookstore
P.O. Box 128
FIN-00101 Helsinki
Finland
Website: <http://www.akateeminen.com>

ISBN 978-952-5333-84-8
ISSN 1799-5590
ISSN-L 1237-4741

Printed by Hakapaino Oy, Helsinki, Finland

CONTENTS

Acknowledgements	5
1 Introduction	6
<i>Mai Sato and Mike Hough</i>	
2 Why measure trust in justice?	10
<i>Mike Hough and Mai Sato</i>	
3 How to measure trust? Survey measures of trust in justice	18
<i>Mike Hough</i>	
4 Results of the pilot surveys	24
A. Overview: Trust in justice, procedural and distributive fairness and fear of crime.....	24
<i>Todor Galev and Maria Yordanova</i>	
B. Exploring trust in justice and fear of crime through media consumption	30
<i>Zsolt Boda, Gergő Medve-Bálint and Gabriella Szabó</i>	
C. Testing scales of public trust and police legitimacy.....	36
<i>Jonathan Jackson and Jouni Kuha</i>	
D. Ethnic minorities and trust in criminal justice: report on the French pilot.....	43
<i>Guillaume Roux, Sebastian Roché and Sandrine Astor</i>	
Appendix 1: European Social Survey (ESS) Questionnaire	48
Appendix 2: Euro-Justis Pilot Questionnaire	59
Appendix 3: Technical and fielding reports	93

ACKNOWLEDGEMENTS

Thanks are due to a large number of people who have helped the Euro-Justis team over the course of this project. Firstly, of course, we are very grateful to the European Commission for funding the research. We would also like to thank the two Project Officers from the Commission who have worked with us over the life of the project: Dr Ian Perry, who oversaw the beginning of the project, and Dr Manuela Alfé, who saw it through to completion. Their support and advice was especially valued.

We owe a great debt of gratitude to our External Expert Group, who generously gave their time and advice to the project. The Chairman of the EEG was Professor Julian Roberts, and its members were Gordon Barclay, Kjell Elefalk, Professor Sir Roger Jowell, Dr. Balazs Kiss, Professor Helmut Kury, Dr. Tapio Lappi-Seppälä, Professor Jacques de Maillard, Dr. Jan de Keijser, Professor Betsy Stanko, Professor Stephan Parmentier, Andreas Pottakis, Ruslan Stefanov, Professor Jyrki Tala, Daniela Stradiotto, Dr. Emil Tsenkov and Alison Walker.

We would also like to thank various colleagues who committed time and energy to the project, for example by attending our conferences and presenting papers at them, and by commenting on, or co-authoring or contributing papers. Special thanks are due to Professor Tom Tyler of New York University and Professor Wesley Skogan of Northwestern University.

The Euro-Justis project was greatly strengthened by the success of our bid for space on the fifth (2010) European Social Survey, which provided us with an international survey in which to trial the suite of survey questions which were designed under the aegis of Euro-Justis. We would like to thank the ESS team for accepting our bid, and – equally important – for the considerable support and constructive criticism that they provided in helping us refine and improve our suite of questions.

Finally, it is worth saying that a large collaborative project such as this requires the goodwill and mutual trust of a large team of researchers. It has been a privilege to be the coordinating members of the Euro-Justis partnership, and to have had such supportive, industrious and creative colleagues over the last 40 months.

Professor Mike Hough

Dr. Mai Sato

London 2011

1 INTRODUCTION

By Mai Sato and Mike Hough

By any standards, Europe faces a number of challenges over the next few decades. We clearly face a period of economic turbulence, triggered in the short term by the 2008 banking crisis and in the longer term by changes in the centre of gravity of the globalised economy. Whilst these changes may present rich opportunities to many Europeans, it will very probably make life harder for the poorest groups. With equal certainty we can anticipate in the middle term forms of climate change with unknown implications. These developments will bring with them rapid social change and – possibly – large-scale migration within and into Europe.

All of these changes are likely to pose increased rather than reduced problems of social order. Strained economies are likely to result in less social justice and in greater income disparities. It may be that the factors that have driven crime down in many industrialised countries over the last decade and a half will offset these criminogenic trends. But it would be very complacent simply to assume that this will prove the case. Any intelligent criminal policy should anticipate the worst – and be grateful if the predictions fail to come true.

But in a time of particular austerity, how should European Union member states set about strengthening their crime policies? The strategy pursued in the United States – exponentially greater expenditure on policing and punishment – hardly seems a 21st century solution. This report sketches out a different approach, which relies on building public trust in justice, public belief in the legitimacy of justice institutions and thus public commitment to the rule of law. The argument in brief is that if people trust criminal justice agencies, such as the police, they will regard them as a form of legitimate authority; they will then defer to this authority, obey the law and cooperate with the justice system and comply with the law. Institutions build legitimacy through public trust; and to earn trust, justice officials must treat citizens respectfully and observe their rights. If they are successful in earning public trust, the end result will be a system of justice that is both humane and effective. If, on the other hand, the police and other justice officials lose public trust, this will breed public cynicism about the rule of law and encourage law-breaking.

The Euro-Justis project

The ideas and research findings presented here derive from the Euro-Justis project, funded under the European Commission's 7th Framework Programme for Research. The project had nine partners in seven EU member states.¹ Its remit was to develop social indicators on trust in justice to enable evidence-based public assessment of criminal justice across Europe. At the heart of the project was an effort to create a standardised system of scientific survey indicators that can be used by member states to measure confidence in criminal justice, and to support the development of more inclusionary criminal justice policies designed to secure commitment to the rule of law and thus compliance with the law. From 2008 to 2011, the Euro-Justis project examined the need for such indicators by interviewing criminal justice professionals across Europe (Jokinen et al., 2009);² developed scientific survey-based indicators on trust in justice, including a set of questions selected for the European Social Survey which covers 28 countries; collected country-level contextual data to appreciate nationally specific issues to interpret the survey measures; and fielded and validated those indicators in several European countries.

The 'trust in justice' module of the European Social Survey (ESS)

A significant outcome of the Euro-Justis project was a successful bid to the ESS for space in its fifth sweep, conducted in 2010. The ESS, conducted with support from the EU but with fieldwork funded by individual member-states, consisted of a core questionnaire and variable modules. Academic researchers are invited to bid for space in these modules, and members the Euro-Justis team bid successfully for a 45 question module, which in essence was a core set of Euro-Justis questions (see Jackson et al., 2011). The end result is that we have not only *developed* a suite of questions on trust in justice, but have already fielded these questions in a large social survey carried out to high standards in at least 28 European countries. At the time of writing data were due to be available in the autumn of 2011. The total sample will include around 40,000 adults.

¹ Euro-Justis - Scientific Indicators of Confidence in Justice: Tools for Policy Assessment (duration: 1/3/2008-31/6/2011) is a Specific Targeted Research Project funded under the Socio-Economic Sciences and Humanities Programme of the 7th Framework Programme for Research of the European Union, Thematic Priority 6 – Socio-economic and scientific indicators. Project website: www.eurojustis.eu

² JUSTIS Project Working Papers Review of Need: Indicators of Public Confidence in Criminal Justice for Policy Assessment (available from: <http://www.eurojustis.eu/fotoweb/34.pdf>).

Whilst we regard this development as a very positive one, it meant that the Euro-Justis project did not develop in precisely the way that was envisaged when we submitted our proposals. The project ended up yielding – directly or indirectly – a number of different ‘products’:

- A small number of ‘headline indicators’ for use in existing surveys
- A free-standing set of 45 survey questions used in the ESS, which provide key measures of trust in justice, perceptions of legitimacy, cooperation with justice and compliance with the law
- A suite of around 166 questions (including the ESS items) that provides exhaustive coverage of trust, legitimacy, cooperation, compliance, fear of crime and punitivity.

The set of core ESS questions were piloted exhaustively as part of the ESS developmental process. The larger set of 166 items was also piloted as part of the Euro-Justis project in Bulgaria, Italy and Lithuania; a parallel survey was mounted in the Czech Republic. Finally, an adapted questionnaire was piloted in France, designed specifically to examine the relationships between police and ethnic minorities.

The shape of this report

This report marks the completion of the Euro-Justis project. It does three things. First, Chapter 2 sets out a conceptual framework – or a set of ideas – about ‘trust-based justice’, arguing that building trust in justice ought to be a central priority for governments across Europe. It explains why we believe it is important to use indicators of public trust in justice as a barometer for testing the state of criminal justice systems across Europe.

Chapter 3 proposes practical ways in which member states can and should measure public trust in justice. It summarises the concepts that are important to measure, and presents the way that we think measurement is best done.

Chapter 4 sets out some of the findings from the piloting process, presenting preliminary results from Bulgaria, France, Italy and Lithuania – to give a flavour of how to make use of indicators in order to inform careful and long-term criminal policies.

References

- Jackson, J., Bradford, B., Hough, M., Kuha, J., Stares, S. R., Widdop, S., Fitzgerald, R., Yordanova, M. and Galev, T. (2011) '*Developing European Indicators of Trust in Justice*', *European Journal of Criminology*. Vol 8 No. 4: 267–285.
- Jokinen, A., Ruuskanen, E., Yordanova, M., Markov, D. and Ilcheva, M. (2009) *JUSTIS Project Working Papers Review of Need: Indicators of Public Confidence in Criminal Justice for Policy Assessment*. Helsinki: HEUNI. (available from: <http://www.eurojustis.eu/fotoweb/34.pdf>).

2 WHY MEASURE TRUST IN JUSTICE?

By Mike Hough and Mai Sato

Europe has enjoyed a half-century of unprecedented prosperity and tranquility. This prosperity has brought most Europeans lifestyles of comfortable consumerist individualism. Over the last thirty years it has also created widening income disparities in many countries, with a minority of socially excluded people living on very low incomes. One of the by-products of these trends at the end of the last century was rising crime. However, crime peaked in most member states in the mid-1990s, and trends since have been generally downward. Reasons probably include the economic upturn enjoyed by many countries in the 1990s, better crime prevention and security design, and better policing.

It is probably over-optimistic to expect these downward trends to continue into the middle of the century. Member States and EU institutions should probably anticipate growing rather than receding threats to social order. Europe clearly faces what at best may prove a short-term period of economic turbulence, triggered by the 2008 banking crisis; at worst this could turn into a serious challenge to the Euro-zone economies. Those countries with fragile economies have little choice to agree to swingeing public expenditure cuts, and it is hard to see how these cuts can avoid fuelling social inequality.

Other trends will exacerbate these processes. Globalisation and increasing competition, for example from the South Asian and Chinese economies, are driving down the wages of the less affluent sectors of the European population. Migration within Europe and immigration into Europe constitute further threats to social stability. Maintaining commitment to the rule of law will be a growing challenge as populations become ethnically and culturally more diverse. The economies of EU Member States could also be destabilised by the impact of climate change and even by viral pandemics. The precise impact of these threats is unknown, but they are all likely to increase income disparities, to amplify the social exclusion of the poorest segments of the population and thus to intensify problems of crime and order maintenance.

There are two broad policy responses to the problems of crime and disorder: repressive and inclusionary strategies. Repressive strategies rely for their effectiveness on imposing a price on offending that is high enough to deter those who are tempted to commit crime. Over the last twenty years or so there have been pressures on governments to adopt more explicitly repressive measures. The growing prison population and prison overcrowding in Europe can be seen as one of the effects of instrumental criminal policies. Most member states have been under pressure to respond to public opinion about “law and order”. This is partly a consequence of long-run upward crime trends. But – especially in common-law jurisdictions such as Britain – one can see the

emergence of forms of penal populism whereby politicians choose criminal policy as the battleground upon which they can fight with their opponents to demonstrate their competence and tough-mindedness. Media news values make crime a saleable commodity, and the media are very ready to construct crises which politicians can vie to solve (cf. Roberts et al., 2002). This is not to argue that strategies that are “tough on crime” are redundant, but to place them as the centrepiece of justice policy could prove a fundamental misjudgement.

There is a growing body of evidence that coercing compliance with the law is a less efficient route to social order than securing normative compliance – that is, getting people to accept the rule of law because they believe it is right to do so (cf. Tyler, 2006, 2010, 2011; Hough et al., 2010). One can differentiate between inclusionary strategies that are premised on *economic inclusion* to achieve social justice and those that aim to demonstrate that the institutions of justice are themselves *fair and just*. It is the latter group of strategies, based on theories of procedural justice, with which the Euro-Justis project is concerned. Let us now consider in more detail these theories of normative compliance, and in particular procedural justice theories.

The conceptual foundation of Euro-Justis: theories of normative compliance

Classical criminology and common-sense thinking about crime tend to appeal to a simple model of crime control (cf. Hough, 2007) in which:

- people are rational-economic calculators in deciding whether to break the law;
- a deterrent threat is the main weapon in the armoury of criminal justice;
- offenders – and thus crime rates – are responsive primarily to the risk of punishment, which can vary on dimensions of certainty, severity and celerity;
- increasing the severity of sentencing, and extending the reach of enforcement strategies, are therefore seen as sensible responses to crime; and,
- offender rights tend to be seen as a constraint on effective crime control.

More subtle models of crime control recognise that formal criminal justice is only one of many systems of social control, most of which have a significant normative dimension. People choose not to offend out of moral or ethical considerations, and not – generally – through a calculation of self-interest. Criminology has given insufficient attention to questions about why people comply with the law, and too much attention to questions about why people break the law (cf. Bottoms, 2001). The imbalance is important, because questions about reasons for law-breaking tend – not inevitably but because of the political climate in which policy is developed – to yield answers framed

within the boundaries of the simple crime control model described above, finding solutions to crime control that are designed to secure *instrumental compliance*.

Questions about compliance, by contrast, yield answers that recognise the interplay between formal and informal systems of social control, and in particular the normative dimensions in people's orientation to the law. Normative compliance with the law occurs when people feel a moral or ethical obligation or commitment to do so. Theories of normative compliance posit a range of mechanisms by which people acquire – or lose – norms of acceptable behaviour.

It is helpful to think of a broad family of compliance theories which can be traced back to Durkheimian and Weberian thinking about the roots of social order. There are two distinct sides to the family. On the one hand, there has been increasing (or perhaps, more accurately, rediscovered) interest over the last two decades in theories about the relationship between 'political economy' (cf. Reiner, 2007) and crime, which trace the connections between the social distribution of wealth and attachment to – or detachment from – social norms. The emergence of neo-liberal economic policies is obviously implicated in the renewed academic interest. The idea that high levels of income inequality fuel crime is almost a criminological truism, with a long sociological pedigree in strain theory.

Theories of institutional anomie (cf. Messner and Rosenfeld, 2001, 2010) serve as good current variants on this line of thought. According to these, rapid transitions towards the values of free-market economies can unbalance and weaken traditional normative systems of social control. Over the last two decades, establishing the relationships between forms of inequality and detachment from social norms has become less a matter of speculative sociology and increasingly an empirical issue. There is a growing body of comparative research looking at relationships between economic inequality, trust in institutions and crime rates (e.g. Lappi-Seppälä, 2011; Cavadino and Dignan, 2005).

On the other hand, there are compliance theories about the impact on societal norms of the institutions of formal social control. Some of these are clearly in the Durkheimian tradition. For example, Beetham (1992) argues that the legitimacy of institutions of justice derives at least in part from their alignment with the moral values of the policed. The work of Robinson and Darley is also in this tradition. Thus Robinson and Darley (1997) argue that if the law's potential for building a moral consensus is to be exploited, the sentence of the court must be aligned at least to some degree with public sentiments. These ideas are sometimes called intuitive justice theories.

If Robinson and Darley argue the need for judicial *outcomes* to be aligned with public values, procedural justice theorists like Tyler (e.g. 2006, 2010, 2011) emphasise the need for justice institutions to pursue fair and respectful *processes* as the surest strategies for building trust in justice, and thus

institutional legitimacy and compliance with the law. This is the central hypothesis in procedural justice theory.

The two broad families of compliance theory – with their different emphasis on securing social justice and a fair system of justice – are obviously compatible. Social justice and fairness in the justice system are both likely to be preconditions for a well-regulated society. However, only the second family carries direct implications for policy and practice within policing and criminal justice – and the most direct implications flow from procedural justice theories. Many criminologists would like to see the crime-preventive dividend of a fairer distribution of income and wealth, but for police chiefs and politicians with explicit responsibility for crime control, these arguments are inevitably subsidiary to ones about what they should do in the ‘here and now’ of improving systems of justice.

Procedural justice theories

Procedural justice theories are especially useful in making sense of issues around trust in the police, beliefs about police legitimacy and public compliance and cooperation with the law. Legitimacy is a central concept here. There are two uses of the term. Political philosophers often talk of political systems as achieving legitimacy when they meet various agreed objective criteria, to do with acceptance of democratic norms and observance of human rights. Assessments of this sort also involve subjective judgements, of course, about the nature of the ‘good or just society’. But there is a separate set of questions about the ability of a criminal justice system to command legitimacy in the eyes of the public - whether the *policed* see the *police* as legitimate. These questions are open and empirical, and require examination of public attitudes, values, behaviours and beliefs.

Perceived legitimacy exists when the policed regard the authorities as having earned an entitlement to command, creating in themselves an obligation to obey the police. If people willingly offer their obedience to systems of authority that command legitimacy, questions about the ‘drivers’ of legitimacy become of central policy importance. Procedural justice theories propose that perceived legitimacy flows from public trust in institutions; and that public trust is at least in part a function of the quality of treatment that the public receive from justice officials. Thus if the police treat people fairly and respectfully, and if this treatment is aligned with public perceptions of morality, they will be regarded as having legitimate authority, and will be better able to command compliance and cooperation.

Penal populism and procedural justice

It is a straightforward enough idea that people are more likely to comply with the criminal law, and with law officers, when these are seen to be fair and even-handed. In reality however, many developed countries have seen a progressive toughening up of their criminal justice policies, and a growing

political impatience with what is seen as a debilitating culture of human rights. There has been a marked coarsening of political and media discourse about crime and justice (cf. Lappi-Seppälä, 2011). It seems fairly clear that there are structural pressures on politicians – which are intense in some forms of ‘adversarial’ two-party democracies – to offer tough, no-nonsense, populist solutions to crime problems (cf. Roberts et al., 2002). The difficulty with this is that no-nonsense solutions often tend to be genuinely nonsensical, premised on the faulty assumption that persistent offenders adopt the form of *homo economicus*, fine-tuning their criminal behaviour in the face of varying levels of deterrent threat. Criminal justice politicians risk getting trapped within these over-simplified economic theories of instrumental compliance. This is not to argue that instrumental strategies for securing compliance are redundant; but to place them as the centrepiece of justice policy is a fundamental misjudgement.

Procedural justice theorists (e.g. Tyler, 2009, 2011) argue that strategies of instrumental compliance are costly and ineffective. The argument is that motive-based, voluntary self-regulation based on perceptions of the legitimacy of the law is more effective, more economical and more durable over time. According to the procedural justice perspective people are willing to accept decisions and outcomes that they do not regard as being in their personal best interests – provided that they consider justice institutions and officials to be wielding legitimate authority. This points to the possibility of creating a system of social control which is based upon the willing consent and cooperation of citizens, rather than upon the threat of punishment. If such a vision is to be even partly achieved, it will be important to nudge political and public debate towards a greater appreciation of the normative dimension in regulating behaviour. For liberally minded reformers a particular attraction of procedural justice theories is that they promise to resolve the tension that is often thought to exist between effective crime control and the respecting of people’s rights³. They point to the conclusion that fair, respectful and legal behaviour on the part of justice officials is not only ethically desirable, but is a prerequisite for effective justice.

Trust as an organising concept in justice policy

Our analysis shows that few member states currently place the sort of emphasis on trust in justice that we regard as necessary (cf. Jokinen et al., 2009). If policy in member states attends more closely to issues of public trust in the criminal justice system, this should result in systems that are both more just – in the broadest sense – and more effective in tackling crime. If member states are to achieve balanced and effective crime policies, they need to pay closer

³ For more radically minded reformers, of course, procedural justice approaches to crime control may appear a threat, in the sense that they may be construed as promoting false consciousness amongst the victims of economic inequality, that make their relative disadvantage more tolerable.

attention to issues of trust and legitimacy. If they ignore these factors, their criminal policies risk becoming skewed towards short-term crime control strategies at the expense of ensuring that the justice system commands legitimacy and that citizens feel safe and secure. Measures of trust in justice and the legitimacy of legal authorities can be used to inform careful and long-term policies to foster public compliance instead of short-term and 'electioneering' strategies that exploit public feelings for political gain.

Too often today, policy makers tend to base their policy decisions upon an assumed "public dissatisfaction" or "public concern" on various matters of justice, in the absence of any reliable scientific measure of confidence either at the European or country level. As a result, policy is not driven by scientific and transparent measurement of public attitudes to justice. Member states need well-designed indicators of public trust and institutional legitimacy if they are to devise, track and evaluate criminal justice policies. If governments lack proper indicators and scientific evidence on the trajectory of trust and legitimacy over time, they will be unable to measure the impact of such policy. Trust and legitimacy indicators are vital for better formulation of the problems of public confidence, and more effective monitoring of changes in public confidence in response to policy innovation.

It is also important to measure trust in justice through an integrated and European approach, since so many areas of European policy are now strictly interdependent. The process of European integration brings about the need for comparative information on social development. Additional to any benefits related to integration, however, there are obvious benefits for domestic policy assessment if member states are able to benchmark their own performance against their neighbours' and the European norm, using properly validated comparable measures.

References

- Beetham, D. (1991) *The Legitimation of Power*. Basingstoke: Palgrave Macmillan.
- Bottoms, A. E. (2001) 'Compliance and Community Penalties', in A. E. Bottoms, L. Geslthorpe and S. Rex (eds) *Community Penalties: Change and Challenges*. Cullompton: Willan Publishing.
- Cavadino, M. and Dignan, J. (2005) *Penal Systems: A Comparative Approach*. London: Sage.
- Hough, M., Jackson, J., Bradford, B., et al. (2010) Procedural Justice, Trust and Institutional Legitimacy. *Policing: A Journal of Policy and Practice* 04(3): 203–210.
- Jackson, J., Bradford, B., Hough, M., Kuha, J., Stares, S. R., Widdop, S., Fitzgerald, R., Yordanova, M. and Galev, T. (2011) 'Developing European Indicators of Trust in Justice', *European Journal of Criminology*. Vol 8 No. 4: 267–285.
- Jokinen, A., Ruuskanen, E., Yordanova, M., Markov, D., and Ilcheva, M. (2009) *JUSTIS Project Working Papers Review of Need: Indicators of Public Confidence in Criminal Justice for Policy Assessment*. Helsinki: HEUNI (available from: <http://www.eurojustis.eu/fotoweb/34.pdf>).
- Lappi-Seppälä, T. (2011) 'Explaining Imprisonment in Europe' *European Journal of Criminology Vol 8*, No 4: 303–328.
- Messner, S. and Rosenfeld, R. (2001) An Institutional-Anomie Theory of Crime. In R. Paternoster & R. Bachman (Eds.), *Explaining criminals and crime*. Los Angeles: Roxbury.
- Messner, S. and Rosenfeld, R. (2010) Institutional-Anomie Theory: A macro-sociological explanation of crime. In A. J. L. Krohn & G. P. Hall (Eds.), *Handbook on crime and deviance*. New York: Springer Science Business Media.
- Reiner, Robert (2007) *Law and order : an honest citizen's guide to crime and control*. Polity, Cambridge.
- Roberts, J.V., Stalans, L.S., Indermaur, D. and Hough, M. (2003) *Penal Populism and Public Opinion. Findings from Five Countries*. New York: Oxford University Press.
- Roberts, J. V. and Hough, M. (2005) *Understanding Public Attitudes to Criminal Justice*. Maidenhead: Open University Press.
- Robinson, R. H. and Darley, J. M. (1997) 'The Utility of Desert', *Northwestern University Law Review*, Vol. 91: 453–499.
- Tyler, T.R. (2009) Legitimacy and Criminal Justice: The Benefits of Self-Regulation. *Ohio State Journal of Criminal Law*. 7: 307–359.

- Tyler, T.R. (2004) Enhancing Police Legitimacy. *The Annals of the American Academy of Political and Social Science*. 593: 84–99.
- Tyler, T.R. (2006) *Why People Obey the Law* (second edition). New Haven: Yale University Press.
- Tyler, T.R. (2010) *Why People Cooperate? The Role of Social Motivations*. New Jersey: Princeton University Press.
- Tyler, T. R. (2011) 'Trust and legitimacy: policing in the US and Europe', *European Journal of Criminology*. Vol 8 No. 4: 254–266.

3 HOW TO MEASURE TRUST? SURVEY MEASURES OF TRUST IN JUSTICE

By Mike Hough

This chapter presents a short guide on how to use the survey indicators developed by the Euro-Justis project.

Survey indicators for policy

According to Land (1983), there are different types of social indicators. He uses the terms “normative welfare indicators” to refer to indicators which focus on objective measures of welfare, subject to the interpretation that there is a *right* direction to judge whether things are better – such as crime or health. There are also “satisfaction indicators”, which measure psychological satisfaction – such as happiness – instruments that ascertain the *subjective reality* in which people live.

Applying this typology of social indicators to crime, most member states assess the success of their crime policies by reference to levels of crime, usually measured by police statistics or by national surveys of victimisation or the International Crime Victims Survey. In other words, normative welfare indicators are being used, under the assumption that lower crime rates and victimisation rates are the signs of a better society. While these indicators are important measures, the Euro-Justis project advocates rather greater use of subjective – or perceptual – indicators, to assess criminal policy and practice against criteria of public trust.

How to field Euro-Justis survey indicators

Most policy indicators, in criminal justice as elsewhere, are derived from administrative records – the data created by bureaucracies in the course of their everyday work. Survey indicators necessarily require a special data collection process. The options are:

- where the jurisdiction in question is included in the fifth European Social Survey (ESS), to use this source of data.
- to mount a free-standing survey
- to insert questions in an established survey instrument, such as a national crime survey
- to buy space in a commercial ‘omnibus’ survey.

Which option to select depends on the depth and breadth of coverage that is desired. For those countries that took part in the fifth ESS, the best and cheapest option is to draw on these results. It will be possible either to use published results – when these become available in 2012⁴ – or to commission researchers to carry out bespoke analysis.

The key advantage to any jurisdiction of using the ESS to assess public trust in justice is that of comparability: it is possible to make sense of country-level findings by comparing them with those of similar jurisdictions. The biggest limitation is that trend data cannot be assured: there is no prospect of *regular* repeats of the module on trust in justice, and an uncertain prospect of *any* repeat of the module.⁵ However, it would be possible to secure trend data by repeating the module in another survey.

For those countries that did not participate in the fifth ESS, the options are to mount a free-standing survey, or to insert questions in a pre-existing survey. The full suite of questions developed by Euro-Justis (166 items in total, reproduced as Appendix 2) would require a free-standing survey in view of its length. It would take around 45 minutes to complete, which is not far short of the maximum length of interview which respondents will tolerate. This is also the most costly option. The costs of a probability survey of 1,000 people will vary from country to country, ranging from €15,000 to €50,000 or more.

If less in-depth coverage was required, it would be possible to insert a version of the ESS module on trust in, for example, a national crime survey. In piloting, the module took between 15 and 20 minutes (on average) to administer, and the final version (reproduced as Appendix 1) was slightly shorter. For example, a Japanese university has recently mounted a survey in Japan that combines the questionnaire of the International Crime Victims Survey with the ESS trust module. It would also be possible to mount a short survey comprising solely of the ESS module and the necessary demographic data.

Those jurisdictions who do not wish to go for any of these options could consider including a few key questions in a government or commercial omnibus survey. Leaving aside ESS analysis, this is the cheapest option.

Which questions to include?

The Euro-Justis suite of questions included public assessments of fairness, effectiveness and value-expressive aspects, contact with the police, intention to

⁴ The ESS data are placed in the public domain when they have been checked and edited, and any academic institution may analyse them. The Euro-Justis team will be doing so, as will others.

⁵ It would be necessary to bid competitively for space in the ESS questionnaire at some point in the future.

support (e.g. reporting crimes, giving evidence in court), knowledge about the criminal justice system, and perceived legitimacy. The questions were designed in part to enable analysis to identify the relationships between different concepts relating to trust in justice. Table 3.1 summarises these concepts.

Table 3.1 Overview of key Euro-Justis indicators

CONCEPT	SUB-CONCEPT
Trust in the police	Trust in police effectiveness
	Trust in police distributive fairness
	Trust in police procedural fairness
Trust in the courts	Trust in court effectiveness
	Trust in court distributive fairness
	Trust in court procedural fairness
Perceived legitimacy of the police	Obligation to obey the police
	Moral alignment with the police
Perceived legitimacy of the law and the courts	Obligation to obey the law and court decisions
	Moral alignment with the courts
<i>Competing motives to comply with the law</i>	
Perceived risk of sanction	-
Personal morality	-
Compliance with the law	-
Cooperation with the police and courts	-
Contact with the police	Police-initiated positive experience
	Police-initiated negative experience
Perceived legality of police and court action	-
Punitive attitudes	-
Anxiety about crime	-
Media consumption	-

Which questions to include will depend on policy priorities. If an overall indicator of trust in institutions is all that is required, then the top-level indicators that we recommend should take the following form:

Taking into account all the things the [police/courts] are expected to do, would you say they are doing a good job or a bad job? Choose your answer from this card. [Very good job/Good job/Neither good nor bad job/Bad job/Very bad job]

On the other hand, it may be thought important also to have indicators of the sub-concepts that constitute overall trust in the police or the courts. In this case,

it would be necessary to ask the battery of questions measuring trust in police or court effectiveness, distributive fairness and procedural fairness. As each sub-concept in our suite of questions is usually measured by a scale derived from three survey items, this would involve asking 18 questions – if both the police and courts were covered – and more, if people were asked about prosecutors, probation and prisons. We have proposed that trust is the key concept for which indicators are needed, on the basis that improved trust builds legitimacy, compliance with the law and cooperation with justice. Some jurisdictions may regard it as something of a luxury to have indicators of these factors, additional to measures of trust. On the other hand, we would suggest that it is important for policy fully to assess the various factors that promote compliance with the law and cooperation with justice. So indicators of trust may be the top priority, but it is also highly desirable to include indicators of institutional legitimacy.

Presenting indicators

Whatever indicators are settled on, it is worth investing some effort in presenting the results in a way that is quickly and easily assimilable by politicians and their officials. We suggest that spidergrams are a very useful technique for presenting complex data visually. Two examples, using data from the pilot surveys, are shown below. High (positive) scores on each dimension locate countries on the outer edge of the web; low scores place them in the centre.

Figure 3.1 Spidergram presenting selecting police indicators from pilot surveys

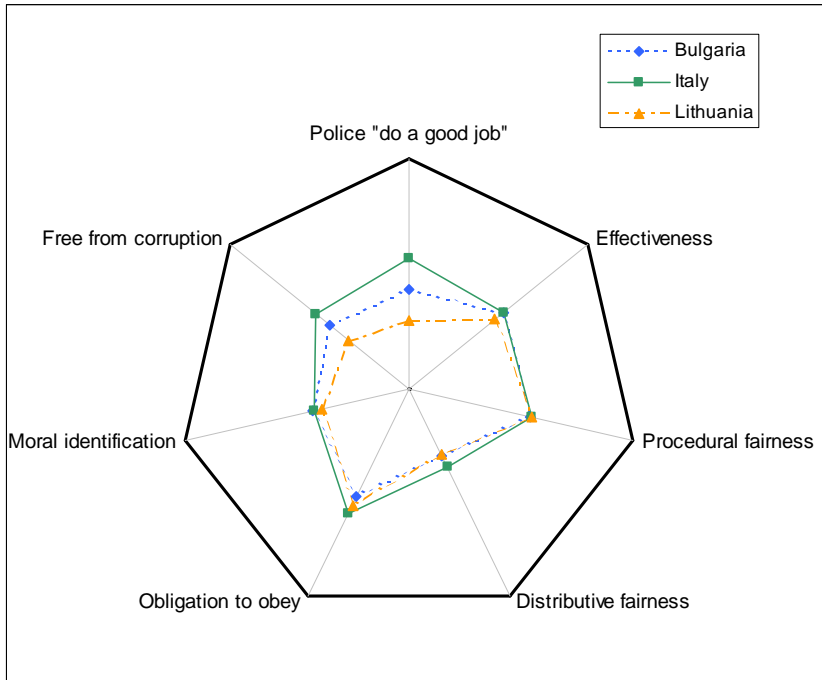
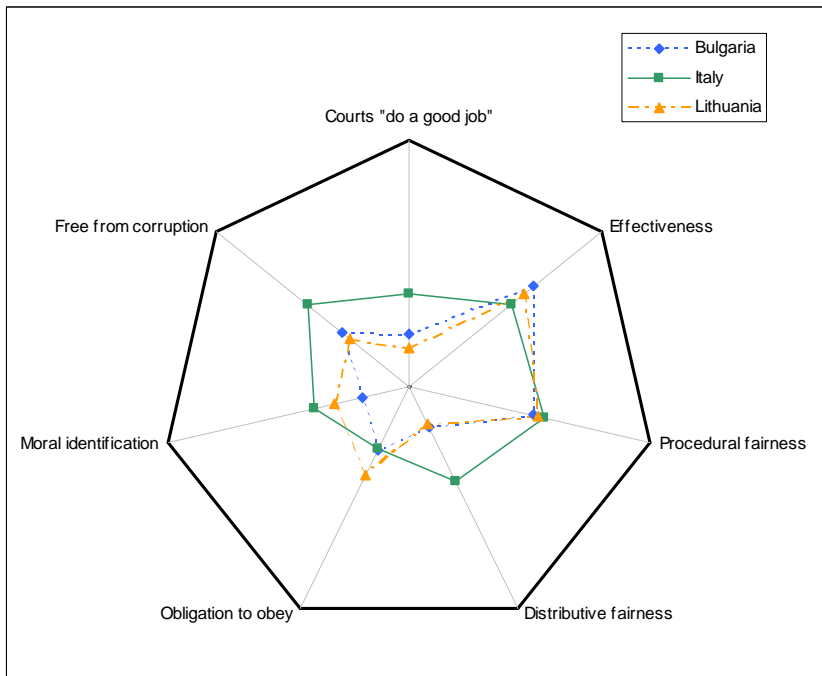


Figure 3.2 Spidergram presenting selecting court indicators from pilot surveys



Note: datapoints are based upon single indicators, some of which were designed to work alongside other indicators to represent an underlying, latent construct. The spidergram is for illustrative purposes only.

References

Land, K. (1983) "Social Indicators", *Annual Review of Sociology*, vol 9: 1–26.

4 RESULTS OF THE PILOT SURVEYS

This chapter falls into four main sections, authored by team members in four of the Euro-Justis partner institutions. The results are preliminary, but they give a good sense of the emerging findings. Fuller results will be presented in academic journal articles over the coming months.

A. Overview: Trust in justice, procedural and distributive fairness and fear of crime

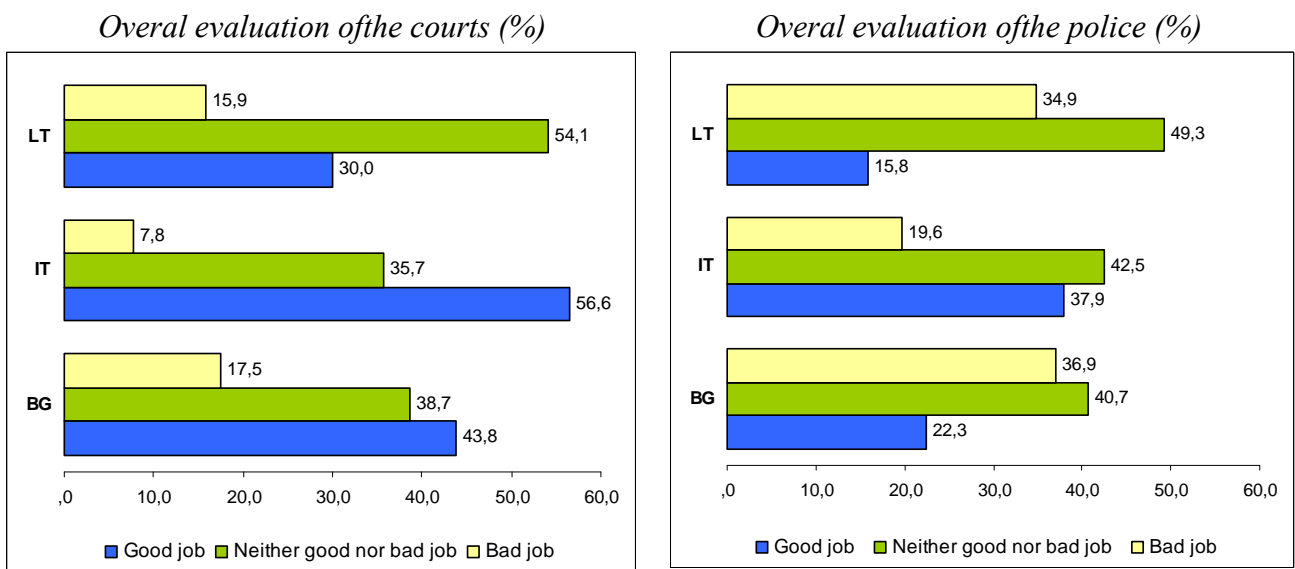
By Todor Galev and Maria Yordanova

This section presents headline findings on levels of trust in justice, perceptions of fairness and fear of crime for the three countries – Bulgaria (BG), Italy (IT), and Lithuania (LT) – in which the first wave of piloting was carried out.

Ratings in overall performance

Consistent with findings in other countries, overall public confidence in police performance is much higher than in the courts in all three countries. Figure 4.1 shows differences between the three countries in responses to our ‘top-line’ item which asked in very general terms how good a job different justice institutions were doing. Italy had the highest positive ratings and the lowest negative ratings for both the police and the courts; Lithuania scored lowest and Bulgaria was in the middle.

Figure 4.1 Overall evaluation of police and courts performance

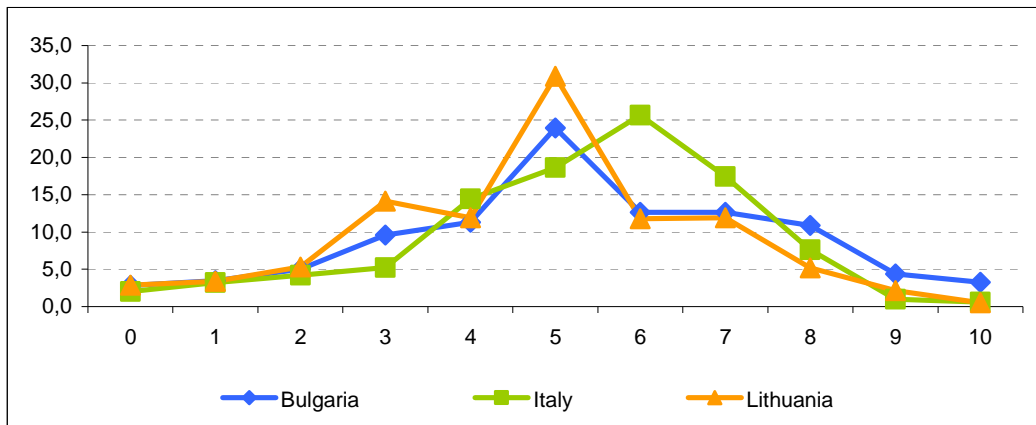


Ratings of police effectiveness

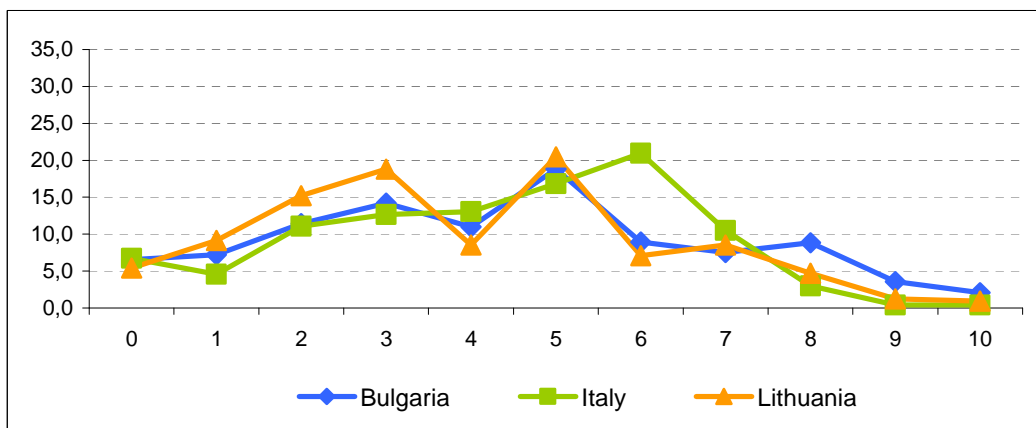
Figure 4.2 shows the results of three more focused questions on police effectiveness. Here respondents were mostly positive and a large proportion of people in all three countries chose the positive end of the scale when asked how successful the police are in preventing crimes and in arriving at the crime scene when they are called. However, trust in the police effectiveness is much lower for catching burglars. These items invited scores on an 11-point scale, running from negative to positive. Italy's ratings appear to be slightly higher than Bulgaria's and Lithuania's.

Figure 4.2 Police effectiveness (% selecting each point of the scale)

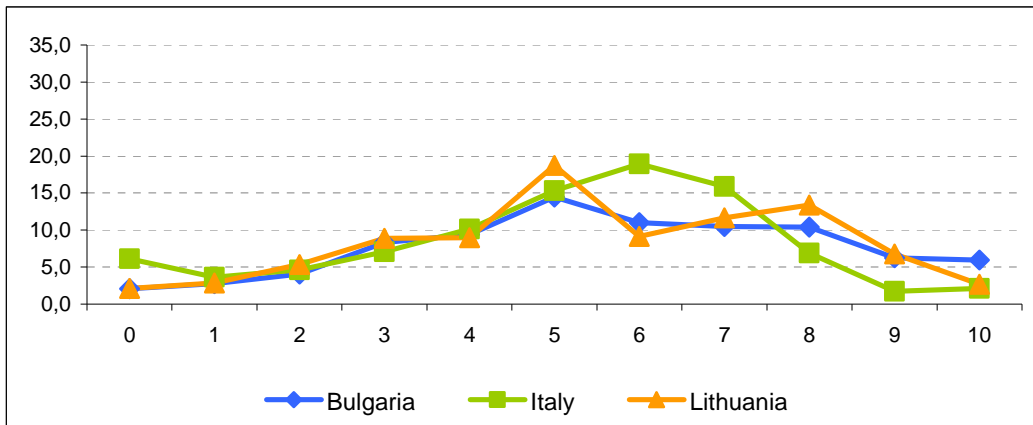
Based on what you have heard or your own experience how successful do you think the police are at preventing crimes in [country] where violence is used or threatened?



And how successful do you think the police are at catching people who commit house burglaries in [country]?



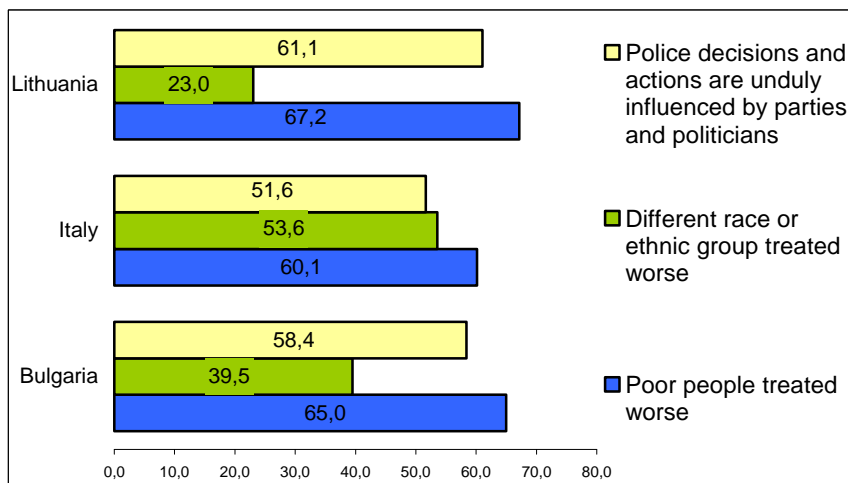
If a violent crime or house burglary were to occur near to where you live and the police were called, how slowly or quickly do you think they would arrive at the scene?



Ratings of police distributive fairness

Ratings of trust in police distributive fairness were generally lower in all three countries as compared to the level of trust in police effectiveness. Two-thirds of the respondents considered the treatment by the police is affected mainly by people’s economic status, i.e. the respondents think the police treat rich people better in all of the countries under consideration (Figure 4.3). When race and the ethnic group are concerned, there are substantial differences among the countries. In Italy the majority of the people (54%) thought that police discriminated people based on race, while this is not the case in Bulgaria (40%) and Lithuania (23%). These results possibly reflect the differences among the countries in the composition of minority and migrant groups and their diversification according ethnicity and race. Lastly, irrespective of the differences between the political systems in the three countries, more than half of the respondents in each country sample think that police decisions are unduly influenced by pressure from political parties and politicians.

Figure 4.3 Trust in police distributive fairness (% agreeing with statement)



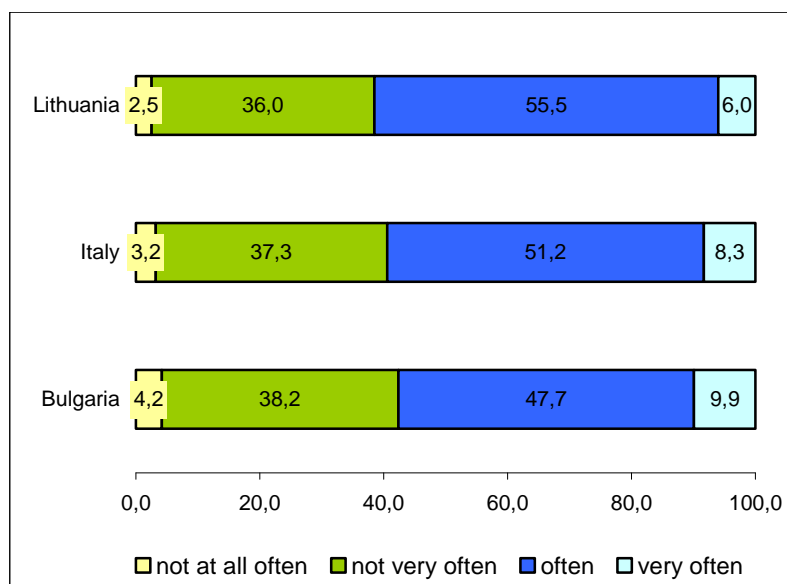
Ratings of procedural fairness

The majority of people in all three countries think that their police ‘often’ treat people with respect, make fair and impartial decisions and explain their decisions to people. Trust in police procedural fairness is the highest in Italy, scoring around 10 percentage points more than in Bulgaria and Lithuania. Ratings of police readiness to explain their decisions and actions when they are asked to do so are lower than for the other two items (Figure 4.4).

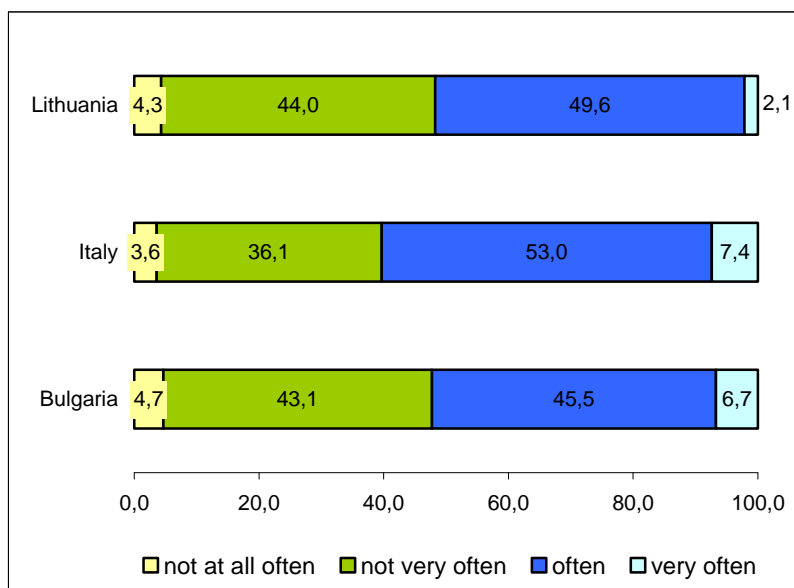
The value of survey items of this sort lies in their scope for yielding comparative information over place or time. It is hard to say from a single ‘snapshot’ survey whether it is reassuring or worrying that, for example, six out of ten respondents in all three countries believe that the police ‘often’ treat people with respect – although in our view it ought to be a matter of concern that four out of ten respondents believe that the police are not very often respectful.

Figure 4.4 Perception on police procedural fairness

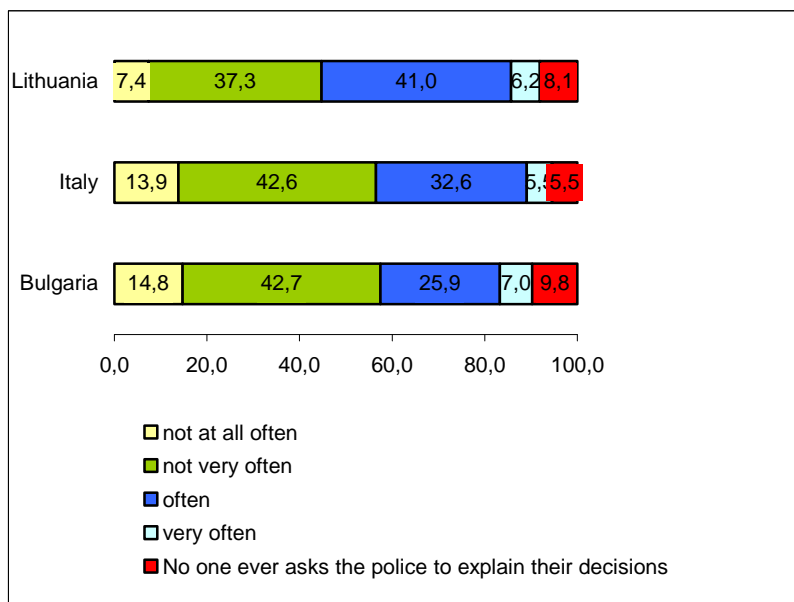
Based on what you have heard or your own experience how often would you say the police generally treat people in [country] with respect ...



About how often would you say that the police make fair, impartial decisions in the cases they deal with? Would you say...



And when dealing with people in [country], how often would you say the police generally explain their decisions and actions when asked to do so?



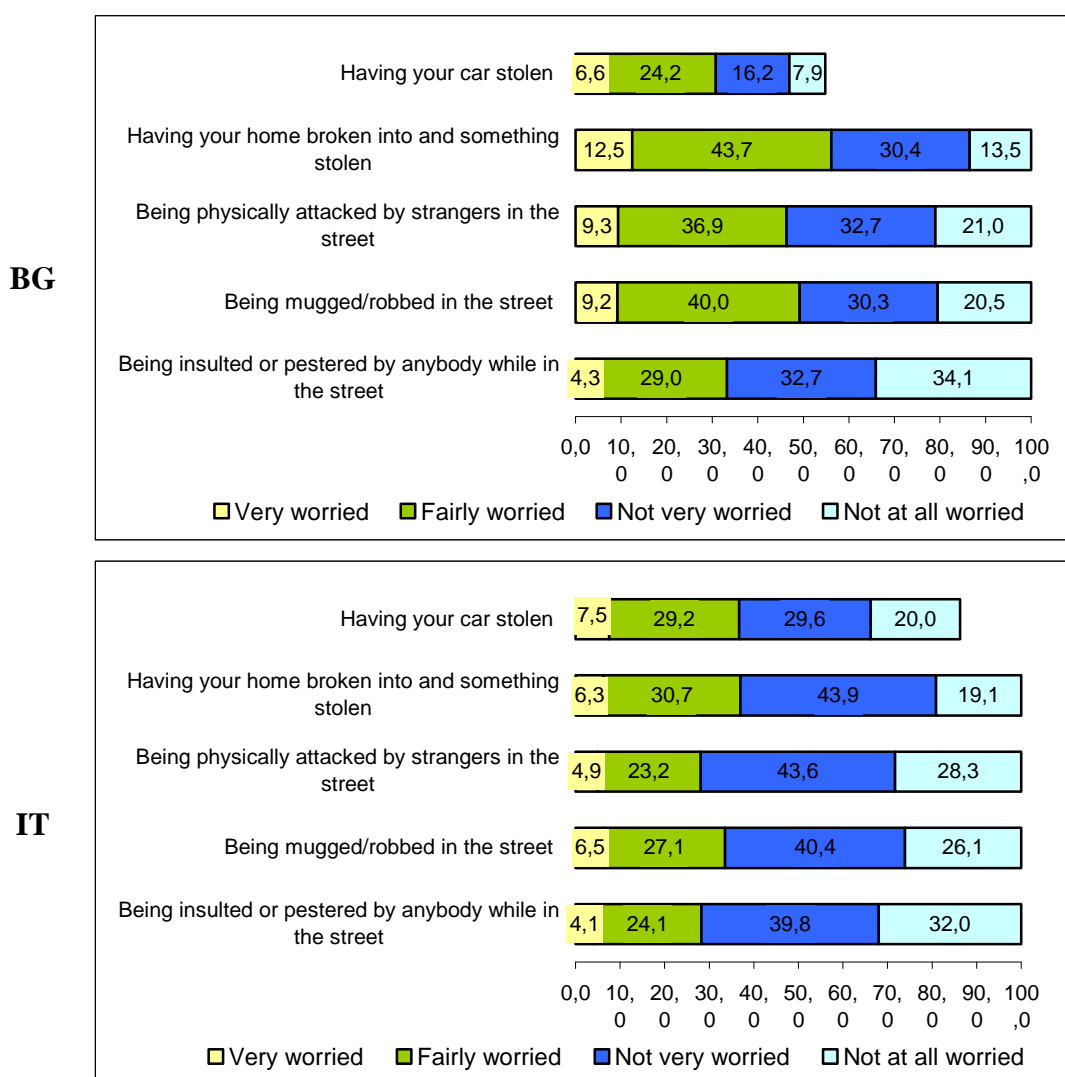
Fear of crime

As for fear of crime, the degree of insecurity is considerably higher in Lithuania than in Bulgaria and Italy. Particularly in Lithuania, the share of people who feel “very worried” about becoming a victim of different crimes is three to five times higher than in Italy and about two to three times higher than in Bulgaria (Figure 4.5).

One of the reasons could be the higher victimisation rates for those crimes. For example, according to our pilot surveys, the victimisation rate for physical assault in the street for the last five years in Lithuania was 8%, compared to 4% in Bulgaria, and 40% knew of others who have been victimised in their

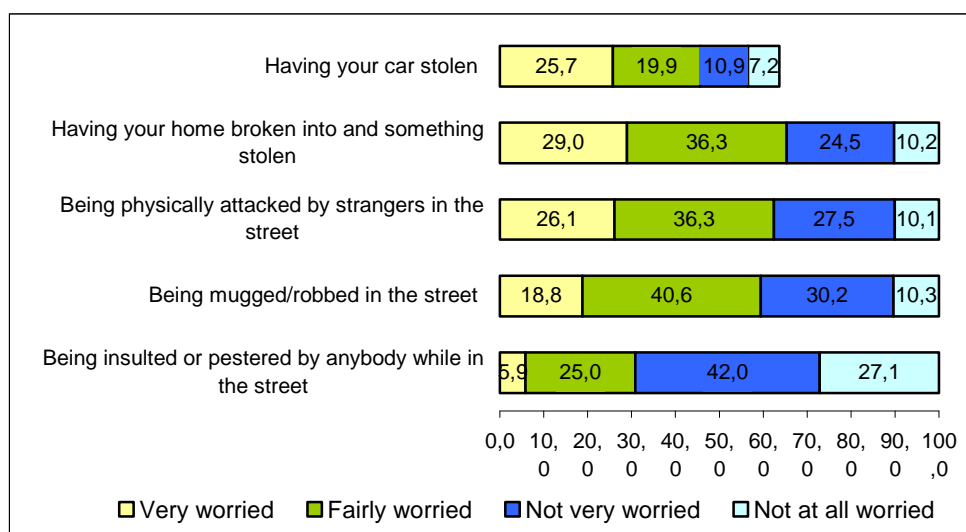
neighbourhood compared to 21% in Italy and 15% in Bulgaria. At the same time, victimisation rates for burglary are similar in the three countries⁶ (11% in Bulgaria, 7% in Italy and 11% in Lithuania) with a higher proportion of Italians knowing about others who have been victimised in their neighbourhood in comparison to the other two piloting countries (52% in Italy, 43% in Lithuania and 32% in Bulgaria). The higher levels of fear of crime expressed in Lithuania were not accompanied by corresponding perceptions that this was affecting their quality of life. One can speculate that higher rates of crime on the one hand prompt anxiety about crime, but on the other hand that people get used to these feelings as a fact of life.

Figure 4.5 Fear of crime and insecurity (%)



⁶ The differences are within the range of statistical error.

LT



Conclusions

These findings are intended simply to provide a ‘taster’ of the potential for comparative analysis of survey data of this sort. With only three countries to compare, the results are somewhat tantalising. The comparison of 28 countries which the ESS will shortly permit will enable us to present a much fuller comparative picture.

B. Exploring trust in justice and fear of crime through media consumption

By Zsolt Boda, Gergő Medve-Bálint and Gabriella Szabó

This section explores the possible effects of media consumption on fear of crime, and on trust in criminal justice; and examines if there is a relationship between media consumption and punitive attitudes. The following hypotheses were formulated:

- **H1:** Heavy consumption of tabloid press and tabloid television genres is associated with a high level of fear of crime.
- **H2:** Those who are interested in crime-related media content have less trust in of the criminal justice institutions (e.g. CSI effect: people who watch fictional crime series develop unrealistic expectations about the work of criminal justice institutions).
- **H3:** There is a relationship between media consumption and punitive attitudes.

Analysis presented in this section presents the combined results from the three piloting countries – Bulgaria, Italy, and Lithuania, unless stated otherwise.⁷

Media consumption and fear of crime

Media consumption was measured by using the following indicators: preference for reading crime-related articles in newspapers; preference for reading crime-related articles in tabloid newspapers; watching fictional crime TV series (e.g. CSI); watching reality crime TV series (e.g. Cops); reading tabloids daily or weekly magazines; the length of time spent reading newspapers on an average weekday, the length of time spent watching TV on an average weekday.

Crime-related consumption – both fiction and non-fiction – as well as the extent of media consumption in general – were found to be associated with higher levels of fear.⁸ For example, those who read crime-related content in newspapers were more likely to report being “very worried” about being a victim of crime (8% compared to 3%) and less likely to claim that they were “not worried at all” (18% compared to 26%).⁹ We observed the same relationship concerning those respondents who liked to watch reality crime series on TV.¹⁰ 14% reported to be “very worried” compared to 5% of those who did not follow such series. Finally, the group of respondents who watched TV for more than three hours a day seems to be more concerned with being a victim of crime than those who spend less time in front of the screen. 44% of those who spend more than three hours a day watching TV were “very worried” or “fairly worried” compared to 37% of those whose daily TV consumption is between one and three hours and 34% for those who watch TV for less than an hour a day.¹¹

Media consumption and institutional trust

Trust in the police

Examining the relationship between media consumption and trust in the police, the extent of media consumption was – surprisingly – associated with higher

⁷ Weights were applied to the dataset based on the US Census Bureau International Population Database (data from 2010). We created a weight variable that weighted cases for age cohorts (below 30; 30–44; 45–59; 60–74; above 74), gender and population size.

⁸ Fear of crime was measured by creating an ordinal fear of crime index by combining four questions (worry about being insulted or pestered by anybody while in the street or any other public place; being mugged/robbed in the street; being physically attacked by strangers in the street; and having your home broken into and something stolen), and defined by “very worried”, “fairly worried”, “not very worried” and “not at all worried”.

⁹ $\chi^2 = 41.551$; $df = 3$; $N = 2425$; $p < 0.001$

¹⁰ $\chi^2 = 28.932$; $df = 3$; $N = 2424$; $p < 0.001$

¹¹ $\chi^2 = 25.699$; $df = 6$; $N = 2423$; $p < 0.001$

levels of trust.¹² Longer time spent reading newspapers was associated with higher trust levels: 54 % of those who read newspapers for less than half an hour a day demonstrated some trust or high trust in the police compared to 72% of those who spend more than an hour a day with reading newspapers.¹³ A similar but even stronger relationship appears with time spent watching TV: while only 41% of those who watch TV for less than an hour have some trust or high trust in police, the corresponding figure is 61% for those who spend more than three hours watching TV.¹⁴ Focusing specifically on the content of media consumption, it was found that those who watched crime-related fiction series on TV were somewhat more likely to report the “highest trust” level towards the police (23%) than those who did not (15%).¹⁵ In addition, reading tabloid magazines and preferring crime-related content was also associated with greater trust in police. 20% of this group of respondents was classified as having the highest trust level in police compared to 14% of those who did not read tabloids.¹⁶

Trust in the courts

There were mixed results for trust in the courts: the amount of time spent on newspaper and TV consumption showed opposite associations.¹⁷ The more time one spent reading newspapers, the more likely it was that the respondent had a relatively high trust in courts: 62% of those who spent more than one hour reading newspapers had some or high trust in courts while this share was 49 % for those who spent even less time reading newspapers.¹⁸ On the other hand, those who watch more TV trust courts less: only 46 % of those who watch TV for more than three hours trust courts (some trust or high trust category) compared to 62% of those who watch it for less than an hour per

¹² Trust in the police was measured by creating an ordinal trust in the police index by combining four questions (whether the police are doing a good job or a bad job; whether the police generally have the same sense of right and wrong as I do; whether the police stand up for values that are important to people like me; and whether I generally support how the police usually act), and defined by “highest trust in the police”, “some trust in the police”, “low trust in the police” and “lowest trust in the police”.

¹³ $\chi^2 = 41.303$; $df = 6$; $N = 2337$; $p < 0.001$

¹⁴ $\chi^2 = 79.291$; $df = 6$; $N = 2342$; $p < 0.001$

¹⁵ $\chi^2 = 21.522$; $df = 3$; $N = 2342$; $p < 0.001$

¹⁶ $\chi^2 = 19.315$; $df = 3$; $N = 2342$; $p < 0.001$

¹⁷ Trust in the courts was measured by creating an ordinal trust in the courts index by combining five questions (whether the courts are doing a good job or a bad job; whether the courts make mistakes that let guilty people go free; how often courts make fair, impartial decisions based on the evidence made available to them; how often say that judges in [country] take bribes; whether the courts generally protect the interests of the rich and powerful above those of ordinary people (reverse), and defined by “lowest trust the in courts”, “some trust in the courts”, “low trust in the courts” and “lowest trust in the courts”.

¹⁸ $\chi^2 = 24.198$; $df = 6$; $N = 1817$; $p < 0.001$

day.¹⁹ Although slightly above the set confidence level, reading tabloid newspapers still seems to have a non-negligible association with trust in courts: those respondents who read tabloid magazines seem to trust the courts more (56% of them fell in the some trust and high trust categories) than those who did not read tabloids (47%).²⁰ Reading crime-related news was also just above our pre-defined confidence level, still, the variable offered an interpretable association: 49% of those who prefer reading crime-related content placed some or high trust in courts compared to a higher share, 56% of those who did not indicate such preference.²¹

Media consumption and punitive attitudes

Punitive attitudes were measured by two variables: the perceived need for harsher sentences by the courts; and the perceived need to make current sentencing practice harsher. As for the perceived need for harsher sentences, those who chose crime as their preferred topic to read and those who spent a longer time watching TV had punitive attitudes.²² Those who preferred to read crime-related content in press were more likely to agree (82%) that courts should punish criminals harsher than those who did not read crime-related content (75%). However, it is important to note that there seems to be a widespread consensus about the need for tougher punishments. Similarly, those who watched more TV (more than three hours a day) shared a greater consent for harsher sentences (83%) than those who watched TV for less than an hour per day (61%). Reading tabloid newspapers and preferring crime-related content to read produced the expected results: 81% of this group would have liked harsher punishments compared to 76% of the other group.²³

As for the perceived need to make current sentencing practice harsher, the picture is much less clear. In general, the overwhelming majority of respondents agreed that sentences were too lenient. That said, those who spend more time reading the newspaper (more than an hour) were less punitive than those who spend less time reading the newspaper.²⁴ For the amount of time spent watching TV, those who spent least time watching TV (less than half an hour) were less punitive than those groups who spent longer time watching TV.

¹⁹ $\chi^2 = 22.516$; $df = 6$; $N = 1821$; $p = 0.001$

²⁰ $\chi^2 = 14.051$; $df = 3$; $N = 1821$; $p = 0.003$

²¹ $\chi^2 = 14.662$; $df = 3$; $N = 1821$; $p = 0.002$

²² Crime as the preferred topic to read ($\chi^2 = 28.205$; $df = 2$; $N = 2515$; $p < 0.001$); time spent with watching TV ($\chi^2 = 81.240$; $df = 4$; $N = 2515$; $p < 0.001$).

²³ $\chi^2 = 16.687$; $df = 2$; $N = 2527$; $p < 0.001$

²⁴ Time spent with reading newspapers ($\chi^2 = 20.597$; $df = 4$; $N = 2348$; $p < 0.001$); time spent with watching TV ($\chi^2 = 30.648$; $df = 4$; $N = 2350$; $p < 0.001$).

Trust in media and attitudes towards the police and courts

Shifting the focus from media consumption, this section examines the relationship between trust in the media and attitudes towards the police and the courts.²⁵

Trust in media and trust in the police

Positive evaluation of the media was associated with higher trust in the police. Respondents who agreed with the statement that the media provided accurate, reliable and sufficient information on the topics they were interested in were more likely to demonstrate higher levels of trust in police.²⁶ Similarly, those who were satisfied with the quality of media were more likely to have higher trust levels in the police than those who were dissatisfied with media quality.²⁷ Those who disagreed that the media simply reflected the views of the majority showed lower trust in police.²⁸

Trust in media and trust in courts

Similarly, the respondents who agreed with the statement that the media provided accurate, reliable and sufficient information on the topics they were interested in seemed to trust the courts slightly more.²⁹ The same association appeared between trust in courts and the statement on the satisfaction with the quality of media: respondents satisfied or at least neutral with the quality of media demonstrated higher levels of trust in courts.³⁰ Those who agreed with the statement that the media reflected dominant political views were significantly less likely to belong to the group demonstrating the highest trust level towards the courts.³¹ However, at the same time they were no more critical of courts than the other groups. This is because their combined share in the “no trust” and “little trust” categories (48%) was just slightly above the combined share of the other two groups (47% of neutrals and 42 % of those disagreeing with the statement. The association was more straightforward for those who agreed that the media were biased towards business interests – they

²⁵ There were five statements which examined the respondents' evaluation of the quality of the media: the media I read/watch provide accurate, sufficient and reliable information about the issues I am interested in; I am satisfied with the quality and content of media what I read/watch; the media are biased towards dominant political views; the media are generally biased towards business interests; and the media simply reflect the views of the majority. Respondents were asked to choose from the following options: agree, neither agree nor disagree, disagree.

²⁶ $\chi^2 = 23.640$; $df = 6$; $N = 2312$; $p = 0.001$

²⁷ $\chi^2 = 38.665$; $df = 6$; $N = 2331$; $p < 0.001$

²⁸ $\chi^2 = 69.461$; $df = 6$; $N = 2320$; $p < 0.001$

²⁹ $\chi^2 = 93.021$; $df = 6$; $N = 1806$; $p < 0.001$

³⁰ $\chi^2 = 91.470$; $df = 6$; $N = 1818$; $p < 0.001$

³¹ $\chi^2 = 33.361$; $df = 6$; $N = 1793$; $p < 0.001$

were also more likely to trust the courts.³² Respondents who did not agree with the statement that the media simply reflected the views of the majority were much more likely to report low or the lowest trust levels towards the courts.³³

Conclusion

It is likely that the mass media are indeed an important factor in how people process and perceive the world; however, the results have demonstrated that identifying precisely the role media plays in shaping people's minds and attitudes to crime and criminal justice is a complex task. From a series of bivariate analyses, we found some evidence for **H1** as heavy media consumption seemed to be associated with higher levels of fear of crime. However, we were unable to verify **H2**: higher media consumption seemed to be associated with greater trust in criminal justice institutions, including the finding that watching crime-related fiction on TV may build a positive image towards the police rather than developing unrealistic expectations about their work. We also found partial evidence that trust in the media and confidence in criminal justice institutions are associated with each other. Concerning **H3**, we also found some evidence of association between greater media consumption and the presence of punitive attitudes. However, the survey data showed that in general, there was a very high level of punitive attitudes present among the majority of respondents and it was not possible to determine precisely how media consumption was influencing this.

All in all, we did not find substantial evidence for the existence of a direct, strong and homogenous media effect which explains variations in levels of fear of crime and trust in criminal justice institutions. Media consumption perhaps should be considered as the expression of identity and personality ("I am what I read/watch"; "I share the same media experience with the social group I choose to belong to") rather than something shaping people's identify. Fear of crime, for instance, can be fuelled by media content, but only for those who are already sensitive and receptive to crime-related issues. Future analysis should focus on factors that influence the respondents' choice of preferred media context, such as their socio-economic background through the usage of multivariate analysis. While more detailed analysis is necessary, preliminary findings on predicting respondents' fear of crime using multivariate analysis showed that media consumption plays a secondary role in explaining fear of crime, in comparison to other factors such as being more trusting of others, gender (being a woman), the experience of victimisation, and living in a large city which offered more explanatory power.

³² $\chi^2 = 34.995$; $df = 6$; $N = 1793$; $p < 0.001$

³³ $\chi^2 = 106.782$; $df = 6$; $N = 1808$; $p < 0.001$

C. Testing scales of public trust and police legitimacy

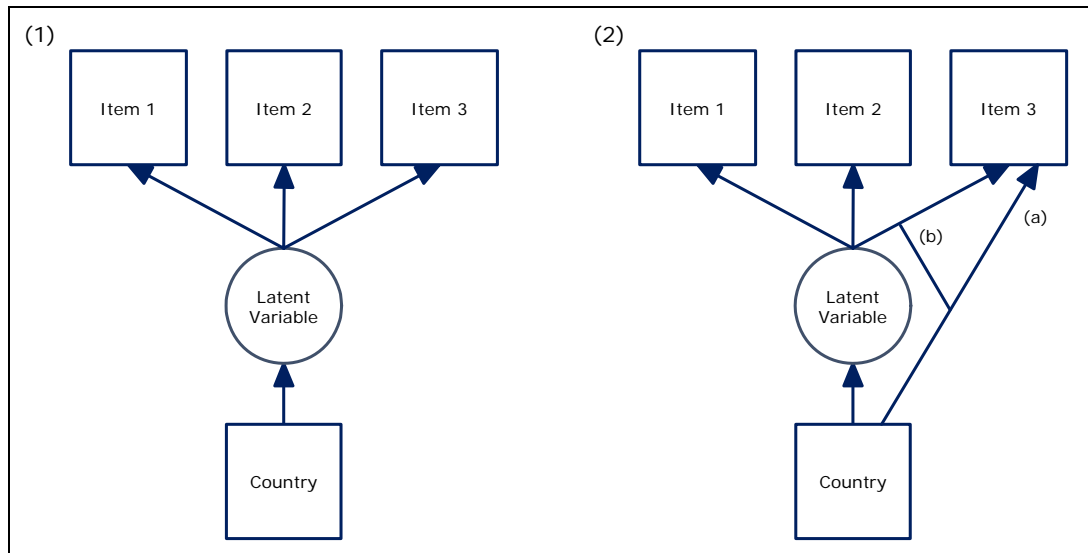
By Jonathan Jackson and Jouni Kuha

In this section we assess the measurement properties of the scales of trust and legitimacy through a statistical analysis of data from the Euro-Justis pilot surveys. Many of the Euro-Justis measures are designed to form scales, and multiple-item survey scales are commonly analysed using latent variable models, which include such methods as linear factor analysis and structural equation modelling, latent trait (item response) models, and latent class models (for overviews, see Bartholomew and Knott, 1999; Bollen, 1989; McCutcheon, 1987, and Skrondal and Rabe-Hesketh, 2004). All of these operationalise the basic idea that the individual survey items are regarded as fallible measures of some directly unobservable (i.e. latent) construct, and that it is those latent constructs that are the main focus of interest.

In this section we use latent variable modelling to test the ‘measurement equivalence’ of the items. A key concern of the demonstration project is to test whether the measures are measuring equivalent ‘things’ in the three different countries. Do the questions seem to be measuring the *same thing* in Italy, Lithuania and Bulgaria? Do the scales ‘work’ equally well? To answer these questions we present models for four main theoretical constructs, each of which is measured by three survey items. The constructs are (a) *trust in police effectiveness*, (b) *trust in police procedural fairness*, (c) *obligation to obey the police*, and (d) *moral identification or alignment with the police*. We model the survey items using linear factor analysis models of the kind defined by equations (1)-(4) below, and represented by the diagrams in Figure 4.6. We do not focus on other constructs in this section, for example trust in court effectiveness and obligation to obey the courts. This is for the simple reason that the measures were not multiple indicators designed to capture single constructs.

Figure 4.6 Graphical representations of the types of models considered in the analysis.

Diagram (1) represents a model of complete measurement equivalence, where the distribution of the latent variable may vary between countries, but the measurement model for survey items as measures of the latent variable is the same in all countries. Diagram (2) represents partial non-equivalence where the measurement model of Item 3 varies between countries. The arrow labelled (a) represents a direct effect of country on the average level of the Item, i.e. an effect on the intercept term of the measurement model. The line marked (b) represents a situation where, furthermore, the loading of the latent variable in the measurement model depends on the country.



Latent variable models can be used to examine cross-national comparability of survey measurement, when constructs are measured using multiple indicators. Suppose η_{ij} denotes the value of a single latent variable η for respondent j in country i , and let Y_{ijk} denote the value of survey item k for that respondent. Suppose that items $k=1, \dots, K$ are all measures of η (in our examples $K=3$). In all of the models, we make the following assumption about the latent variable that

$$\eta_{ij} \text{ is normally distributed with mean } \mu^{(i)} \text{ and variance } \tau^{(i)}. \quad (1)$$

The superscript (i) indicates that in general the parameters may have different values in different countries, i.e. that there may be differences in the average level and variability of the latent construct among individuals in different countries. This is typically a substantively interesting possibility that we want to allow in the model; it is indicated by the arrow from “Country” to “Latent variable” in Figure 4.6.

The *measurement model* is a model for the items Y_{ijk} given the latent variable η_{ij} . We will consider different possibilities for this model. The simplest of them states that

$$Y_{ijk} = \nu_k + \lambda_k \eta_{ij} + \delta_{ijk} \quad (2)$$

for all items $k=1, \dots, K$. Here δ_{ijk} is a normally distributed random variable with mean 0 and variance θ_{kk} . All of the parameters ν_k , λ_k , and θ_{kk} of this model are the same in all of the countries. The measurement is then said to be fully equivalent across the countries. This case is represented by diagram (1) of Figure 4.6, where the equivalence is indicated by the fact that the diagram contains no arrows directly from country to the survey items.

If any parameters of the measurement model do vary between countries, the measurement is not fully equivalent. Equivalence is “partial” if it holds for some, but not all, the items. For example in diagram (2) of Figure 4.6, measurement of item 3 is non-equivalent. We will consider two forms of non-equivalence, depending on which parameters of the measurement model it affects. In the first, only the *intercept* terms ν_k may vary between countries, so that

$$Y_{ijk} = \nu_k^{(i)} + \lambda_k \eta_{ij} + \delta_{ijk} \quad (3)$$

for one or more items k . In Figure 4.6, this “direct effect” from country to an item is represented by the arrow labelled (a). The second possibility is that both the intercepts and the *loadings* λ_k may vary, so that for some items

$$Y_{ijk} = \nu_k^{(i)} + \lambda_k^{(i)} \eta_{ij} + \delta_{ijk} \quad (4)$$

The variation in the loadings can be thought of as an interaction between country and the latent variable in the measurement model; it is represented by the line labelled (b) in Figure 4.6. In both models (3) and (4) we assume that the measurement variances θ_{kk} are the same across countries, but other choices for them are also possible.

A summary of the results of our analyses is given in Table 4.1 (see page 40). We examined one item at a time. As an example, consider the police effectiveness item EFF3, which is shown third in Table 4.1. A model of full equivalence was fitted for the three items for each construct, and with one of the other items (here EFF1) as the anchor item. This is the model given by equations (1) and (2), and is labelled “Equivalence” in the table. The estimates of the intercepts $\nu_k^{(i)}$ and loadings $\lambda_k^{(i)}$ of the measurement model for item EFF3 are shown in this row of the table, separately for Italy, Lithuania and Bulgaria. For the equivalence model, these are by definition equal for the three countries. Estimates of the rest of the parameters are not shown in the table.

The row labelled “Direct effect” shows estimates of the intercepts and loadings of the item being tested when measurement model is (3) for that item (and the

equivalence model (2) holds for the other two items). Here the intercept for EFF3 is 5.721 for Bulgaria and 5.989 for Lithuania, but 5.160 for Italy. Finally, the row labelled “Interaction” shows estimates when model (4) is used for the item being tested, i.e. when both the intercept and slope of that item vary by country. These three models are then repeated for the other three constructs.

The different models for each item are then compared using standard statistical likelihood ratio (LR) tests (see Agresti and Finlay 2009, S. 15.3). This test always compares a pair of models, where one model is a constrained version of the other. Three comparisons are considered here: between the Equivalence and Direct-effect models; between the Direct-effect and Interaction models; and directly between the Equivalence and Interaction models. The P-values of these tests are shown in Table 4.1. A small P-value indicates that the less constrained of the two models fits substantially better than the more constrained one, and a large P-value that the models are not significantly different.

For example, in the comparison of the Equivalence and Direct-effect models for item EFF2 we have $P=0.276$, which indicates that the less constrained Direct-effect model does not fit significantly better than the more constrained Equivalence model. For EFF1 we have $P<0.01$ for the same comparison, so the opposite conclusion is reached. In other words, when the intercept parameters of the measurement model of an item are allowed to have different values in the three countries (while keeping the measurement models of the other two items for the same concept the same across countries), their difference is statistically significant for EFF2 but not for EFF1. The measurement is cross-nationally equivalent in this respect for EFF2 but not for EFF.

Lessons drawn

For the two trust scales we find evidence of non-equivalence in the intercepts of the measurement models between the countries, but not their loadings between the countries. In particular, we find two intercepts vary between countries, with inspection of the findings for trust in police effectiveness indicating that people in Lithuania tend to think that the police are slightly less effective at preventing violence (conditioning on their value on the latent variable), compared to people in Bulgaria or Italy. Compare the intercepts of 5.147 in Lithuania, 5.338 in Bulgaria and 5.503 in Italy (Table 4.1), where the indicators range from 0 to 10). Moreover, people in Italy tend to think the police are slightly less effective at arriving at the scene of a violent crime, compared to Bulgaria or Italy (intercepts of 5.169 in Italy, 5.721 in Bulgaria and 5.989 in Lithuania).

From a substantive point of view, however, these are not very big differences. Similarly, for trust in police procedural fairness, people in Lithuania tend to have slightly less trust that the police make fair, impartial decisions, compared with people in Italy and Bulgaria (intercepts of 2.455 in Lithuania, 2.558 in Bulgaria and 2.646 in Italy, where the indicators range from 1 to 4). By contrast, people in Lithuania tended to have slightly more trust that the police

explain their decisions and actions, compared to people in Italy and Bulgaria (intercepts of 2.522 in Lithuania, 2.306 in Bulgaria and 2.269 in Italy). Again, however, these are not large substantive differences.

Turning to two aspects of police legitimacy, we find patterns of incomparable intercepts *and* loadings. With obligation to obey the police, people in Lithuania are less likely to feel that it is their duty to back police decisions (even if they disagree with the decisions) but more likely to feel that it is their duty to do what the police tell them to do (even if they don't understand or agree with the reasons), compared to people in Bulgaria and Italy (and conditioning on their value on the latent variable). Similarly, people in Lithuania are less likely to think that the police share their sense of right and wrong but slightly more likely to believe that the police stand up for votes that are important to them.

Overall, we find some differences in the scales across countries. Yet, they do not seem too large. So what should we conclude? What should we do now that we have found that certain items in a scale do not function equivalently across countries? We have a number of different options, including dropping items and letting them load differently in different countries. But what are the costs and benefits of these various choices, and how sensitive to them are substantive conclusions? Currently the methodological literature is rather sparse on the effects of measurement invariance on substantive conclusions. Answers to such questions are arguably harder and much less well understood than the mechanics of fitting the statistical models themselves. It is beyond the scope of this publication, but we are currently working on this issue (<http://stats.lse.ac.uk/lcat/>), so watch this space.

Table 4.1 Results of likelihood ratio (LR) tests and estimated parameters of one-factor models for the survey items responding to four constructs, comparing models with different levels of measurement equivalence for each item in turn.

Items for trust in police effectiveness

Item tested	Model	P-value for LR comparison with		Parameter estimates for item tested					
		Equivalence	Direct effect	Intercept			Loading		
				Bulgaria	Italy	Lithuania	Bulgaria	Italy	Lithuania
EFF1	Equivalence			5.315	5.315	5.315	1.000	1.000	1.000
	Direct effect	<0.001		5.338	5.503	5.148	1.000	1.000	1.000
	Interaction	0.002	0.230	5.693	5.693	5.693	1.000	0.923	0.910
EFF2	Equivalence			4.443	4.443	4.443	1.148	1.148	1.148
	Direct effect	0.276		4.416	4.590	4.454	1.156	1.156	1.156
	Interaction	0.223	0.210	4.416	4.592	4.497	1.132	1.154	1.249
EFF3	Equivalence			5.706	5.706	5.706	0.886	0.886	0.886
	Direct effect	<0.001		5.721	5.160	5.989	0.903	0.903	0.903
	Interaction	<0.001	0.456	5.721	5.169	5.977	0.891	0.993	0.878

Items for trust in police procedural fairness

Item tested	Model	P-value for LR comparison with		Parameter estimates for item tested					
		Equivalence	Direct effect	Intercept			Loading		
				Bulgaria	Italy	Lithuania	Bulgaria	Italy	Lithuania
PJ1	Equivalence			2.636	2.636	2.636	1.000	1.000	1.000
	Direct effect	0.097		2.649	2.580	2.631	1.000	1.000	1.000
	Interaction	0.199	1.000	2.364	2.581	2.632	1.000	0.969	0.933
PJ2	Equivalence			2.550	2.550	2.550	1.058	1.058	1.058
	Direct effect	<0.001		2.558	2.646	2.455	1.075	1.075	1.075
	Interaction	<0.001	0.631	2.558	2.646	2.454	1.059	1.124	1.093
PJ3	Equivalence			2.371	2.371	2.371	0.925	0.925	0.925
	Direct effect	<0.001		2.306	2.269	2.522	0.941	0.941	0.941
	Interaction	<0.001	0.448	2.305	2.271	2.525	0.928	0.887	0.999

Items for obligation to obey the police

Item tested	Model	P-value for LR comparison with		Parameter estimates for item tested					
		Equivalence	Direct effect	Intercept			Loading		
				Bulgaria	Italy	Lithuania	Bulgaria	Italy	Lithuania
OBEY1	Equivalence			5.365	5.365	5.365	1.000	1.000	1.000
	Direct effect	<0.001		5.150	5.560	5.546	1.000	1.000	1.000
	Interaction	<0.001	<0.001	5.149	5.505	5.607	1.000	1.011	0.810
OBEY2	Equivalence			5.117	5.117	5.117	1.283	1.283	1.283
	Direct effect	<0.001		5.209	4.917	4.754	1.300	1.300	1.300
	Interaction	<0.001	<0.001	5.210	4.908	4.676	1.253	1.300	1.401
OBEY3	Equivalence			5.194	5.194	5.194	1.187	1.187	1.187
	Direct effect	0.001		5.106	5.194	5.379	1.184	1.184	1.184
	Interaction	0.004	0.448	5.106	5.221	5.386	1.202	1.149	1.174

Items for moral alignment with the police

Item tested	Model	P-value for LR comparison with		Parameter estimates for item tested					
		Equivalence	Direct effect	Intercept			Loading		
				Bulgaria	Italy	Lithuania	Bulgaria	Italy	Lithuania
MORALID1	Equivalence			3.440	3.440	3.440	1.000	1.000	1.000
	Direct effect	<0.001		3.312	3.292	3.719	1.000	1.000	1.000
	Interaction	<0.001	<0.001	3.312	3.294	3.668	1.000	1.116	0.760
MORALID2	Equivalence			3.505	3.505	3.505	1.256	1.256	1.256
	Direct effect	<0.001		3.500	3.676	3.415	1.224	1.224	1.224
	Interaction	<0.001	0.014	3.500	3.669	3.425	1.220	1.122	1.345
MORALID3	Equivalence			3.416	3.416	3.416	1.211	1.211	1.211
	Direct effect	<0.001		3.486	3.332	3.259	1.172	1.172	1.172
	Interaction	<0.001	0.203	3.486	3.333	3.264	1.148	1.144	1.258

References

- Agresti, A. and Finlay, B. (2009) *Statistical Methods for the Social Sciences* (4th ed.). Upper Saddle River, NJ: Pearson.
- Bartholomew, D. J. and Knott, M. (1999) *Latent Variable Models and Factor Analysis*. London: Arnold.
- Bollen, K. A. (1989) *Structural Equations with Latent Variables*. New York: Wiley.
- McCutcheon, A. L. (1987) *Latent Class Analysis*. Newbury Park: Sage.
- Skrondal, A. and Rabe-Hesketh, S. (2004) *Generalized latent variable modeling: multilevel, longitudinal and structural equation models*. Boca Raton: Chapman & Hall/CRC.

D. Ethnic minorities and trust in criminal justice: report on the French pilot

By Guillaume Roux, Sebastian Roché and Sandrine Astor

The French pilot survey differs from those carried out in Bulgaria, Italy and Lithuania for its focus on ethnic minorities. In France, there has been increasing tension between the police and ethnic minority youths in disadvantaged neighbourhoods. The widely reported riots which took place in 2005 – the largest in Europe since the WWII – is a clear example of this tension. Thus, the main objective of the French pilot was to explore differences between ethnic groups in attitudes towards the police, and to examine factors that can explain any differences in trust in the police.

The French pilot consisted of two surveys: one was a nationally representative sample of residents in France; and the other came from one of the most deprived administrative units of France (Department of Seine-Saint-Denis) where ethnic minorities are overrepresented compared with the national average (see Table 4.2).³⁴

Table 4.2 Distribution of ethnic minorities (Findings from the French pilot survey)

	Ethnic Majority	Ethnic Minorities	Total
France	86%	14%	100% (N=751)
Seine-Saint-Denis	62%	38%	100% (N=752)

In this report, “ethnic minorities” refer to people of African origin, who in equivalent Anglo-American research might be classified in categories such as Black, Black African, Black Caribbean, Black English, or Black American. In other words, our definition of ethnic minorities refers to “visible ethnic minorities”. The main reason for focusing on these minority groups was due to previous research that the police are more likely to perceive visible ethnic minorities to be involved in crime and conduct frequent stops and searches on them (Lévy & Jobard, 2010; Roux, 2007).³⁵ “Ethnic majority” in this report refers to white French nationals.

³⁴ The interviews were conducted by telephone, targeting those 18 years and older (adults only). For the French questionnaire, and the technical and fielding reports is available from the Euro-Justis website: <http://www.eurojustis.eu/fotoweb/74.pdf>

³⁵ In the survey questionnaire, we followed the French convention of avoiding explicit questions about skin colour and racial or ethnic identity. As a proxy we asked about interviewees’ nationality; in addition, however, we asked whether at least one of interviewees’ parents or grandparents were non-French nationals, and if so, what their nationality was.

Table 4.3 displays the difference between ethnic minorities and the ethnic majority in their level of trust in the national police. Distrust is higher amongst ethnic minorities (41%) in comparison to the French ethnic majority (27%). The most marked difference was found in the proportions reporting the lowest level of trust (“not at all trust”) with 10 percentage-points difference between ethnic minorities (18%) and the ethnic majority (8%). Higher levels of distrust by ethnic minorities were expected, but further analysis showed that distrust was specific to the national police. We found almost no difference between ethnic minorities and the ethnic majority in their attitudes towards the Gendarmerie, the courts, schools, social services, or the national employment service (Table 4.4).³⁶ This suggests that there is a specific trust disparity between ethnic minorities and the ethnic majority concerning the national police.

Table 4.3 Trust in the police: ethnic minority vs. ethnic majority

	Ethnic Majority	Ethnic Minorities
Totally trust	17%	16%
Somewhat trust	56%	42%
Do not trust	19%	23%
Not at all trust	8%	18%
Total	100% (N=1,105)	99% (N=387)

Note: The total percentage for “Ethnic Minorities” does not reach 100% due to rounding up of figures.

Table 4.4 Distrust towards police and other institutions

	Ethnic Majority	Ethnic Minorities
National Police	27%	41%
Gendarmerie	15%	16%
Courts	45%	43%
Schools	31%	30%
Social Services	21%	21%
National Employment Service	51%	48%

Note:

- 1) Attitudes towards institutions (national police, Gendarmerie, courts, schools, social services, and the national employment service) were measured by “totally trust”, “somewhat trust”, “do not trust”, and “not at all trust”.
- 2) The figures displayed in the table show the proportion of distrust (“do not trust” and “not at all trust”) for each institution.

Hence, we combined geographical origins with nationality, enabling us to identify French citizens who were first, second, or third generation immigrants to France.

³⁶ In France, there are two main policing institutions, the national police and the Gendarmerie. In broad terms the police are the main policing agents in large towns and cities, and the institution with which our ethnic minority respondents would have been familiar. By contrast, the Gendarmerie are responsible for the policing of small towns and rural areas.

Potential reasons behind low trust in the national police expressed by ethnic minorities could be linked to their perception of policing style. Asked if they agreed with the statement “where I live, the police abuse stop and search towards certain persons”, ethnic minorities were more likely to agree that the police are biased in their targeting of stops (Table 4.5). In addition, a larger proportion of ethnic minorities (22%) viewed police patrol in their neighbourhoods as a threat – “when the police patrol where I live, they aim at provoking inhabitants” – in comparison to the ethnic majority (8%). Qualitative analysis from focus groups, held separately to the French pilot survey, also showed that ethnic minority youths from poor disadvantaged neighbourhoods saw police presence in their neighbourhoods as an intrusion, viewing the police as an outsider to their community.

Table 4.5 Perception of policing style

“Where I live, the police abuse stop and search towards certain persons”

	Ethnic Majority	Ethnic Minorities
Agree	31%	49%
Disagree	69%	51%
Total	100% (N=1105)	100% (N=387)

“When the police patrol where I live, they aim at provoking inhabitants”

	Ethnic Majority	Ethnic Minorities
Agree	8%	22%
Disagree	92%	78%
Total	100% (N=1088)	100% (N=384)

Descriptive analyses so far demonstrated differences in the level of trust towards the police, with ethnic minorities having less trust in the police. Multivariate analysis was carried out to explain to what extent “ethnicity” – in this case belonging to visible ethnic minority groups – could explain distrust in the police (Table 4.6). The model included socio-demographic factors, neighbourhood conditions (e.g. level of crime, and accommodation), experience and perception of police encounters, individual core-values, and perceptions of fairness (e.g. procedural justice and police discrimination), and examined the relative importance of these factors against ethnicity.

The model showed that after taking these factors into account ethnicity in fact was not a significant predictor of distrust in the police. In other words, it successfully pinpoints some of the main factors that explain the greater distrust amongst ethnic minorities. Trust (or distrust) in the police was best explained by procedural justice considerations. Those who regarded the police as procedurally fair – for example perceive police officers to treat people in a respectful manner, explain their actions, and reach fair decisions – were more likely to trust the police than others. Similarly, those who considered the police to be discriminatory against ethnicity were more likely to distrust the police. Police fairness was also important not only through individual’s direct

experience with the police but their vicarious experience: witnessing the police treating a stranger, neighbour, or a family member in a disrespectful or unfair manner was a significant predictor of distrust in the police. As for socio-demographic factors, only one variable – holding a low socio-economic occupation (in comparison to having a high socio-economic occupation) – explained distrust in the police.

The policy implication of our findings is that trust in the police is unlikely to be determined by factors which are fixed or pre-determined, such as demographics, but more likely to be shaped by factors which can be changed and improved. This suggests that low levels of distrust displayed specifically to the national police in comparison to other institutions mostly by ethnic minorities could potentially be improved by focusing on the actions of the police centring on the notion of fairness. In addition, the importance of values (in this model, “share police values”) as correlate of trust suggests that reflections are needed in policing policies, so that the different collective identities of communities are respected.

Table 4.6 Linear regression predicting distrust in the police

	Bêta	Sig.
Intercept		.35
<i>Socio-demographic</i>		
Ethnicity	.03	.62
Gender	-.01	.85
Age	-.11	.09
Education	.09	.12
Income	.08	.15
(Occupation)		
Low socio-economic occupation	.14	.02*
Unemployed	.09	.13
<i>Neighbourhood conditions</i>		
Local Disorders	.04	.46
Victimization	.09	.07
(Housing)		
Social housing	-.04	.51
Renting	.11	.05
Housed for free	-.06	0,22
<i>Encounters</i>		
Direct encounters	-.02	.75
Vicarious negative encounters	.17	.00**
<i>Values</i>		
Political orientation	.07	.21
Punitiveness	-.02	.78
Legalism	-.08	.12
"All laws should be obeyed"	.07	.17
Share police values	-.18	.00**
<i>Fairness</i>		
Police procedurally just	-.32	.00**
Police discriminate	.14	.03*
Ethnic Prejudice	-.05	.44
<i>R-square</i>		.47

Note:

- 1) Asterisks represent statistically significant results: * $p < .05$, ** $p < .001$
- 2) Reference category for Occupation: high socio-economic occupation
- 3) Reference category for Housing: own flat/house

References

Lévy, R. and Jobard, F. (2010) "Les contrôles d'identité à Paris", *Questions pénales*. 23 (1).

Roux G. (2007) "An ethnicity effect on attitudes towards the police? The French case", European Society of Criminology, Bologna Conference.

APPENDIX 1: EUROPEAN SOCIAL SURVEY (ESS) QUESTIONNAIRE

Appendix 1 presents the ‘trust in justice’ module of the fifth ESS questionnaire. This represented the core of the suite of questions developed by Euro-Justis, and covers trust in justice, including: confidence in the police and courts, cooperation with the police and courts, contact with the police and attitudes towards punishment.

For the full ESS questionnaire and for other details about the fifth sweep, see <http://www.europeansocialsurvey.org>

ASK ALL: Now some questions on a different topic. I would now like to ask you some questions about how wrong¹ you consider certain ways of behaving to be.

CARD 25 Using this card please tell me how wrong it is to...READ OUT...

		Not wrong at all	A bit wrong	Wrong	Seriously wrong	(Don't know)
D1	...make an exaggerated or false insurance claim ² ?	1	2	3	4	8
D2	...buy something you ³ thought might be stolen?	1	2	3	4	8
D3	...commit a traffic offence like speeding or crossing a red light?	1	2	3	4	8

¹ ‘Wrong’ in the sense of ‘morally wrong’. Countries should use the scale used at E13–E16 in ESS Round 2 for items D1–D3. Note however that only D1 was fielded in Round 2 (as E15) but in a slightly different form.

² The phrase ‘Made an exaggerated or false insurance claim’ was included in Item E15 in ESS Round 2 but the question stem was different.

³ ‘You’ as in ‘the respondent personally’.

CARD 26 Now just suppose you were to do any of these things in [country]. Please tell me how likely it is that you would be caught and punished⁴ if you... READ OUT...

		Not at all likely	Not very likely	Likely	Very likely	(Don't know)
D4	...made an exaggerated or false insurance claim?	1	2	3	4	8
D5	...bought something you thought might be stolen?	1	2	3	4	8
D6	...committed a traffic offence like speeding or crossing a red light?	1	2	3	4	8

Now some questions about the police⁵ in [country].

D7 CARD 27 Taking into account all the things the police are expected to do, would you say they are doing a good job or a bad job? Choose your answer from this card.

Very good job	1
Good job	2
Neither good nor bad job	3
Bad job	4
Very bad job	5
(Don't know)	8

⁴ 'Punished' as in 'punished by the law'; this could be in the form of a prison sentence, fine or any other sentence.

⁵ Note that a generic term should be used here and consistently throughout the module. The translation should encompass all of the different types / levels of police in [country]. Countries might refer to the translation used at B6 in the core questionnaire. If any country specific examples are required to demonstrate that all the police are to be included (e.g. City guards in Poland) these should be mentioned once here and the respondents should then be informed that 'from now on we will simply say the police in [country]'. Countries should reflect on the questions in the module and consider whether any officials who share a range of powers with the police should be mentioned. Note that groups who only control parking should not generally be included. Please contact City if you have any queries about this (ess@city.ac.uk).

ASK ALL D8 In the past 2 years, did the police in [country] approach⁶ you⁷, stop you or make contact with you for any reason?

Yes	1	ASK D9
No	2	GO TO D10
(Don't know)		8

ASK IF HAS BEEN APPROACHED / STOPPED / CONTACTED BY THE POLICE FOR ANY REASON IN PAST 2 YEARS (code 1 at D8)

D9 CARD 28 How dissatisfied or satisfied were you with the way the police treated you the last time this happened? Choose your answer from this card.

Very dissatisfied	1
Dissatisfied	2
Neither dissatisfied nor satisfied	3
Satisfied	4
Very satisfied	5
(Don't know)	8

ASK ALL Now some questions about whether or not the police in [country] treat⁸ victims of crime equally. Please answer based on what you have heard or your own experience.

D10 CARD 29 When victims report⁹ crimes, do you think the police treat rich people worse, poor people worse, or are rich and poor treated equally? Choose your answer from this card.

Rich people treated worse	1
Poor people treated worse	2
Rich and poor treated equally	3
(Don't know)	8

D11 CARD 30 And when victims report crimes, do you think the police treat some people worse because of their race or ethnic group or is everyone treated equally? Choose your answer from this card.

⁶ Approach for any reason (e.g. to ask you for information or because they suspect you have committed a crime or they need to ask you to do something).

⁷ 'You' as in 'the police approached, stopped or contacted the respondent personally'.

⁸ Treat in the sense of how the police respond to and deal with people.

⁹ Report in the sense of 'report in person' so that the police can see them.

People from a different race or ethnic group than most [country] people treated worse 1

People from the same race or ethnic group¹⁰ as most [country] people treated worse 2

Everyone treated equally regardless of their race or ethnic group 3
(Don't know) 8

D12 CARD 31 Based on what you have heard or your own experience how successful do you think the police¹¹ are at preventing crimes in [country] where violence is used or threatened? Choose your answer from this card, where 0 is extremely unsuccessful and 10 is extremely successful.

00 01 02 03 04 05 06 07 08 09 10 88

D13 STILL CARD 31 And how successful do you think the police are at catching people who commit house burglaries¹² in [country]? Use the same card.

00 01 02 03 04 05 06 07 08 09 10 88

D14 CARD 32 If a violent crime¹³ or house burglary were to occur near to where you live and the police were called¹⁴, how slowly or quickly do you think they would arrive at the scene? Choose your answer from this card, where 0 is extremely slowly and 10 is extremely quickly.

00 01 02 03 04 05 06 07 08 09 10 88

(Violent crimes and / or house burglaries never occur near to where I live) 55

¹⁰ See core questionnaire item B35 for a translation of 'people from the same ethnic group as most [country] people'.

¹¹ Again the generic name for all police in [country] should be used (see footnote 35). The question itself and those that follow provide specific cues to respondents that might limit the frame of reference to a specific group / type of police in some countries. However this should be achieved by the crime referred to and NOT by amending the name of the specific police referenced.

¹² House burglary is when someone breaks into a property or enters uninvited with the intention of stealing.

¹³ 'Violent crime' meaning crimes where violence is used or threatened (as at question D12).

¹⁴ Called in the sense of telephoned.

Now some questions about when the police¹⁵ deal with crimes like house burglary and physical assault. The next few questions do not have a showcard.

D15 Based on what you have heard or your own experience how often would you say the police generally treat people in [country] with respect ...READ OUT...

...not at all often,	1
not very often,	2
often,	3
or, very often?	4
(Don't know)	8

D16 About¹⁶ how often would you say that the police make fair, impartial¹⁷ decisions in the cases they deal with? Would you say...READ OUT...

...not at all often,	1
not very often,	2
often,	3
or, very often?	4
(Don't know)	8

D17 And when dealing with people in [country], how often would you say the police generally explain their decisions and actions when asked to do so? Would you say...READ OUT...

...not at all often,	1
not very often,	2
often,	3
or, very often?	4
(No one ever asks the police to explain their decisions and actions)	5
(Don't know)	8

Now some questions about your duty¹⁸ towards the police in [country]. Use this card where 0 is not at all your duty and 10 is completely your duty.

CARD 33 To what extent is it your duty to...READ OUT...

¹⁵ Note we do not suppose there is a police force that only deals with burglary and physical assault in a particular country. A general reference to the police should be used throughout the module.

¹⁶ About in the sense of approximately or roughly.

¹⁷ 'Fair, impartial' - in British English the use of both of these words clarifies the meaning of 'fair' in the context of this question. Countries should ensure that impartiality is conveyed.

¹⁸ 'Duty' in the sense of a citizen's moral duty to the state. The same translation for duty should be used for the scale labels at D19 and D20.

		Not at all my duty										Completely (Don't my duty know)	
D18	...back ¹⁹ the decisions made by the police even when you disagree with them?	00	01	02	03	04	05	06	07	08	09	10	88
D19	...do what the police tell you even if you don't understand or agree with the reasons?	00	01	02	03	04	05	06	07	08	09	10	88
D20	... do what the police tell you to do, even if you don't like how they treat you?	00	01	02	03	04	05	06	07	08	09	10	88

CARD 34 Using this card, please say to what extent you agree or disagree with each of the following statements about the police in [country].

READ OUT EACH STATEMENT AND CODE IN GRID

		Agree strongly	Agree	Neither agree nor disagree	Disagree	Disagree strongly	(Don't know)
D21	The police generally have the same sense of right and wrong ²⁰ as I do.	1	2	3	4	5	8
D22	The police stand up for ²¹ values that are important to people like me.	1	2	3	4	5	8
D23	I generally support how the police usually act.	1	2	3	4	5	8
D24	The decisions and actions of the police are unduly influenced by pressure from political parties and politicians.	1	2	3	4	5	8

Now one last question about the police and things they may or may not do.

D25 CARD 35 How often would you say that the police in [country] take bribes²²?

¹⁹ Back in the sense of 'support'.

²⁰ 'Sense of right and wrong' in terms of 'feeling of morally right or wrong from a personal point of view'.

²¹ 'Stand up for' in the sense of 'defend/uphold/promote'.

Choose your answer from this card where 0 is never and 10 is always.

Never										Always	(Don't know)
00	01	02	03	04	05	06	07	08	09	10	88

I am now going to ask you some questions about the courts in [country] that deal with crimes such as house burglary²³ and physical assault. Again please answer based on what you have heard or your own experience.

D26 CARD 36 Taking into account all the things the courts are expected to do, would you say they are doing a good job or a bad job? Choose your answer from this card.

Very good job	1
Good job	2
Neither good nor bad job	3
Bad job	4
Very bad job	5
(Don't know)	8

D27 CARD 37 Please tell me how often you think the courts make mistakes that let guilty people go free? Use this card where 0 is never and 10 is always.

Never										Always	(Don't know)
00	01	02	03	04	05	06	07	08	09	10	88

D28STILL CARD 37 How often do you think the courts make fair, impartial decisions based on the evidence²⁴ made available to them? Use the same card.

Never										Always	(Don't know)
00	01	02	03	04	05	06	07	08	09	10	88

Now some questions about the chances of different people in [country] being found guilty²⁵ of crimes they did not commit.

²² 'Bribes' can include ANY unauthorised inducement – whether it is an amount of money and/or something else that is valuable or gives influence.

²³ See footnote 46.

²⁴ Evidence' refers to the 'testimony' a witness gives verbally in court AND other materials presented to the court.

²⁵ 'Found guilty' in the sense of being formally convicted by the courts.

D29 CARD 38 Suppose two people - one rich, one poor - each appear in court, charged with an identical crime they did not commit. Choose an answer from this card to show who you think would be most likely to be found guilty.

- The rich person is more likely to be found guilty 1
- The poor person is more likely to be found guilty 2
- They both have the same chance of being found guilty 3
- (Don't know) 8

D30 CARD 39 Now suppose two people from different race or ethnic groups each appear in court, charged with an identical crime they did not commit. Choose an answer from this card to show who you think would be most likely to be found guilty.

- The person from a different race or ethnic group than most [country] people more likely to be found guilty 1
- The person from the same race or ethnic group as most [country] people more likely to be found guilty 2
- They both have the same chance of being found guilty 3
- (Don't know) 8

Now a question about judges and things they may or may not do.

D31 CARD 40 Using this card please tell me how often you would say that judges in [country] take bribes?

- | | |
|--|---------------------|
| Never | Always (Don't know) |
| 00 01 02 03 04 05 06 07 08 09 10 | 88 |

CARD 41 Using this card, please say to what extent you agree or disagree with each of the following statements about [country] nowadays.

READ OUT EACH STATEMENT AND CODE IN GRID

	Agree strongly	Agree	Neither agree nor disagree	Disagree	Disagree strongly	(Don't know)
D32 Courts generally protect the interests of the rich and powerful above those of ordinary people.	1	2	3	4	5	8
D33 People who break the law should be given much harsher sentences than they are these days. ²⁶	1	2	3	4	5	8
D34 Everyone has a duty to back the final verdict of the courts.	1	2	3	4	5	8
D35 All laws should ²⁷ be strictly obeyed.	1	2	3	4	5	8
D36 Doing the right thing ²⁸ sometimes means breaking the law.	1	2	3	4	5	8
D37 The decisions and actions of the courts are unduly influenced by pressure from political parties and politicians.	1	2	3	4	5	8

D38 CARD 42 People have different ideas about the sentences which should be given to offenders. Take for instance the case of a 25 year old man who is found guilty of house burglary for the second time. Which one of the following sentences do you think he should receive? Please use this card.

²⁶ This item was included as D5 in Round 4

²⁷ 'Should' - in the sense of 'must'.

²⁸ 'Doing the right thing' in the sense of 'morally from a personal point of view'.

INTERVIEWER NOTE: If respondent wants to choose more than one sentence, record the sentence with the lowest code number.

If asked what a suspended sentence or community sentence is please say:

‘A suspended prison sentence is only served if the offender commits another crime or breaks other specific conditions during the suspended sentence period’

Community service refers to a sentence OTHER than a prison sentence or fine where the offender is asked to perform a task or tasks that benefit the community’

Prison sentence	1	ASK D39
Suspended prison sentence	2	GO TO INTRODUCTION BEFORE D40
Fine	3	
Community service	4	
Any other sentence	5	
(Don't know)	8	

ASK IF PRISON SENTENCE GIVEN (code 1 at D38)

D39 CARD 43 And which of the answers on this card comes closest to the length of time you think he should spend in prison? Please use this card.

- 1-3 months 01
- 4-6 months 02
- 7- 11 months 03
- About 1 year 04
- About 2 years 05
- About 3 years 06
- About 4 years 07
- About 5 years 08
- 6-10 years 09
- More than 10 years 10
- (Don't know) 88

ASK ALL

Now some questions about what you would do if you were the only witness to a crime. The next few questions do not have a show card.

D40 Imagine that you were out²⁹ and saw someone push a man to the ground and steal his wallet. How likely would you be to call³⁰ the police? Would you be...

²⁹ ‘Out’ as in ‘not at one’s home’.

³⁰ ‘Call’ refers to telephoning the police.

READ OUT...

...not at all likely,	1
not very likely,	2
likely,	3
or, very likely?	4
(Don't know)	8

D41 How willing³¹ would you be to identify the person who had done it? Would you be...READ OUT...

...not at all willing,	1
not very willing,	2
willing,	3
or, very willing?	4
(Don't know)	8

D42 And how willing would you be to give evidence³² in court against the accused? Would you be...READ OUT...

...not at all willing,	1
not very willing,	2
willing,	3
or, very willing?	4
(Don't know)	8

Now some questions about things you might have done.

CARD 44 Using this card please tell me how often you have done each of these things in the last five years? How often have you...READ OUT...

	Never	Once	Twice	3 or 4	5 times	(Don't
			e	times	or more	know)
D43 ...made an exaggerated or false insurance claim?	1	2	3	4	5	8
D44 ...bought something you thought might be stolen?	1	2	3	4	5	8
D45 ...committed a traffic offence like speeding or crossing a red light?	1	2	3	4	5	8

³¹ 'Willing' in the sense of 'freely choose to'.

³² 'Evidence' refers to the 'testimony' a witness gives verbally in court.

APPENDIX 2: EURO-JUSTIS PILOT QUESTIONNAIRE

This is the English (source) version of the Euro-Justis pilot questionnaire, which was used in the Bulgaria, the Czech Republic, Italy and Lithuania.

Q	Topics	Cumulative number of items
A1 – A10	Mass media	10
B1 – B43	Neighbourhood perceptions, relational concerns and fear of crime	53
C1 – C74	Trust in justice and the legitimacy of legal authorities	127
D1 – D15	Self-control, moral norms and instrumental incentives	142
E1 – E15	Ideological positions and psychological needs	157
F1 – F9	Socio-demographics and the item-count technique	166

Please note: there are two experiments embedded in this survey. Each experiment has two conditions. Please ‘cross’ the two experiments, so that there is a .25 probability of a respondent falling randomly into each of the four following conditions:

		Fear of crime experiment (B3 and B8)	
		Raw frequency	Vague quantifiers
Item count technique (F1)	No sensitive item (5 behaviours)	Probability=.25	Probability=.25
	Sensitive item (6 behaviours)	Probability=.25	Probability=.25

A. Mass media consumption

A1 On an average weekday, how much of your time is spent reading the newspapers?

READ OUT

No time at all	00
Less than ½ hour	01
½ hour to 1 hour	02
1 hour to 2 hours	03
2 hours to 3 hours	04
More than 3 hours	05

A2 Please list which newspapers or magazine you read at least once a week and tell, what type of press are they.

INTERVIEWER: HELP CATEGORIZING THE NEWSPAPERS AND RECORD ONLY THE CODING

Tabloid daily papers	00
Daily newspapers	01
Tabloid weekly	02
Political/business weekly	03
Other	04

A3 What types of topic are you most interested in when reading newspapers or magazines? (Maximum of 5 topics to be selected)

READ OUT

Leisure and entertainment	1
Sports	2
Politics	3
Crime	4
Local news	5
Technology	6
Arts and culture	7
Science	8
Economy and business	9
Celebrity news	10
Nature	11
Health and beauty	12
Astrology	13
Fashion and style	14
Other	15

Please specify: RECORD THE VERBATIM

A4 Again on an average weekday, how much of your time watching television?

READ OUT

No time at all	00
Less than ½ hour	01
½ hour to 1 hour	02
1 hour to 2 hours	03
2 hours to 3 hours	04
More than 3 hours	05

A5 What kind of television programmes do you watch most often? (Choose not more than 5 items.)

READ OUT AND CODE

News programmes	1
Documentaries	2
Celebrity news	3
Morning television magazines	4
Movies	5
Fiction series (e.g. House)	6
Sit-coms (e.g. Friends)	7
Crime-related fiction series (e.g. CSI)	8
Reality series (e.g. Cops)	9
Talk shows	10
Late night shows	11
Reality shows	12
Sports	13
Educational programmes	14
Other	15

Please specify: RECORD THE VERBATIM

Please say to what extent you agree or disagree with each of the following statements about the media in [country].

READ OUT EACH STATEMENT AND CODE IN GRID

	Agree strongly	Agree	Neither agree nor disagree	Disagree	Disagree strongly	(Don't know)	
A6	The media I read/watch provide accurate, sufficient and reliable information about the issues I am interested in.	1	2	3	4	5	8
A7	I am satisfied with the quality and content of media what I read/watch.	1	2	3	4	5	8
A8	The media are biased towards dominant political views	1	2	3	4	5	8
A9	The media are generally biased towards business interests	1	2	3	4	5	8
A10	The media simply reflect the views of the majority in society	1	2	3	4	5	8

B. Neighbourhood perceptions, relational concerns and fear of crime

We would like to begin with some questions about the immediate area in which you live. By the area in which you live, we mean [insert clarification of boundaries, taking some direction from colleagues in the respective countries; in the UK it would be: 'By this area I mean the area within about 15 minutes walk of here']

B1 How long have you lived in this area?

Less than 12 months	1
12 months but less than 2 years	2
2 years but less than 3 years	3
3 years but less than 5 years	4
5 years but less than 10 years	5
10 years but less than 20 years	6
20 years but less than 30 years	7
Over 30 years	8
Don't know	9

B2 During the last 12 months have you ever felt worried about having your home broken into and something stolen?

Yes	1
No	2

B3 [If yes to B2] How many times have you felt like this in the past 12 months?

[SPLIT BALLOT: RANDOM HALF GETS THE #1, OTHER RANDOM HALF GETS #2]

#1 INTERVIEWER: PROBE FOR BEST ESTIMATE

_____ times

All the time (hidden code)

#2	All or most of the time	1
	Some of the time	2
	Just occasionally	3
	Never	4
	(Don't know)	8

B4 [If yes to B2] Does this worry about having your home broken into and something stolen have a ...READ OUT....

...serious effect on the quality of your life,	1
...some effect,	2
or no real effect on the quality of your life?	3
(Don't know)	8

B5 Have you been the victim of a burglary in the last 5 years?

Yes	1
No	2

B6 Do you know someone in this area who has been the victim of a burglary in the last 5 years?

Yes	1
No	2

B7 During the last 12 months have you ever felt worried about being physically attacked in the street by a stranger?

Yes	1
No	2

B8[If yes to B7] How many times have you felt like this in the past 12 months?

[SPLIT BALLOT: RANDOM HALF GETS THE #1, OTHER RANDOM HALF GETS #2]

#1 INTERVIEWER: PROBE FOR BEST ESTIMATE

_____ times

All the time (hidden)

#2

All or most of the time	1
Some of the time	2
Just occasionally	3
Never	4
(Don't know)	8

B9 [If yes to B7] Does this worry about being physically attacked in the street have a ...READ OUT....

...serious effect on the quality of your life,	1
...some effect,	2
or no real effect on the quality of your life?	3
(Don't know)	8

B10 Have you been the victim of a physical assault in the street by a stranger in the last 5 years?

Yes 1
No 2

B11 Do you know someone in this area who has been the victim of a physical assault in the street by a stranger in the last 5 years?

Yes 1
No 2

How often (if at all) do you do behave in the following ways in the area in which you live simply as a precaution against crime?

		Never	Occasion-ally	Some-times	Most of the time	Always
B12	Avoid using public transport	1	2	3	4	5
B13	Avoid certain streets or areas	1	2	3	4	5
B14	Avoid certain people in certain streets or areas	1	2	3	4	5
B15	Adopt a 'streetwise' and confident persona	1	2	3	4	5
B16	Carry some means of self-defence	1	2	3	4	5

B17 [Ask unless respondent answered 'never' to all of B12, B13, B14, B15 and B16] If you do take precautions against crime, to what extent (if at all) do you feel safer as a result? ...READ OUT...

...not at all, 1
a little, 2
moderately, 3
very much, 4
(Don't know) 8

B18 If you do take precautions against crime, how much (if at all) is your quality of life affected by the precautions? ...READ OUT...

...not at all, 1
a little, 2
moderately, 3
very much, 4
(Don't know) 8

How likely do you think it is that you will fall victim of each of the following crimes during the next twelve months?

		Definitely not going to happen				Certain to happen
B19	Being physically attacked in the street by a stranger	1	2	3	4	5
B20	Having your home broken into and something stolen	1	2	3	4	5

To what extent do you feel personally able to control whether or you will fall victim of each of the following crimes during the next twelve months?

		Not at all able				To a very great extent
B21	Being physically attacked in the street by a stranger	1	2	3	4	5
B22	Having your home broken into and something stolen	1	2	3	4	5

To what extent do you think your life would be affected if you become a victim of each of the following crimes?

		Not affected much at all				Affected to a very great extent
B23	Being physically attacked in the street by a stranger	1	2	3	4	5
B24	Having your home broken into and something stolen	1	2	3	4	5

Now I would like to ask you about whether you worry about becoming a victim of a range of different crimes. Overall, how worried (if at all) are you about ...?

		Very worried	Fairly worried	Not very worried	Not at all worried	N/A	Don't know
B25	Being insulted or pestered by anybody while in the street or any other public place	1	2	3	4		6
B26	Being mugged/robbed in the street	1	2	3	4		6
B27	Being physically attacked by strangers in the street	1	2	3	4		6
B28	Having your home broken into and something stolen	1	2	3	4		6
B29	Having your car stolen	1	2	3	4	5	6
B30	Having things stolen from your car	1	2	3	4	5	6

B31 Overall, how much (if at all) is your quality of life affected by your worry about crime? ...READ OUT...

...not at all,	1
a little,	2
moderately,	3
quite a bit,	4
very much,	5
(Don't know)	8

Please say to what extent you agree or disagree with each of the following statements in [country].

READ OUT EACH STATEMENT AND CODE IN GRID

		Agree strongly	Agree	Neither agree nor disagree	Disagree	Disagree strongly	(Don't know)
B32	Crime is a fact of life in [country]	1	2	3	4	5	8
B33	Many people in [country] take precautions about crime	1	2	3	4	5	8
B34	Many people in [country] worry about becoming a victim of crime	1	2	3	4	5	8

Different people often have different opinions about crime and worry about crime. We would now like to ask you some questions about a range of difficult individuals. For each individual we will describe their living situation and other aspects of their life. We will then ask for your opinion about the extent to which each individual worries about crime. There are no right answers, we just want your first reactions.

Jenny lives alone in a flat in poor neighbourhood. She rarely goes out for fear of being burgled and is constantly plagued by the thought that her house will be burgled while she is at home. The previous occupant of Jenny's flat had a door chain fitted and installed a burglar alarm. Jenny uses the door chain and burglar alarm regularly.

B35 How worried is Jenny about having her home broken into and something stolen?

Not at all worried	1
Not very worried	2
Fairly worried	3
Very worried	4
(Don't know)	8

B36 How often does Jenny worry about having her home broken into and something stolen?

All or most of the time	1
Some of the time	2
Just occasionally	3
Never	4
(Don't know)	8

B37 To what extent (if at all) does Jenny's worry about having her home broken into and something stolen affect her quality of life?

...serious effect on the quality of her life,	1
...some effect,	2
or no real effect on the quality of her life?	3
(Don't know)	8

Jon lives alone in a flat in a poor neighbourhood. He goes out quite often to see friends who live in another city, so is often away from home for several days when he makes such trips. Jon also works, and is often away from his home during the weekdays for many hours. He sometimes think about the risk of burglary, so he makes sure that he closes windows, locks his door if he goes away overnight, and often leaves on a light which can be seen from outside the flat. He feels safe as a result, and does not think his life is affected by the chances of being burgled.

B38 How worried is Jon about having his home broken into and something stolen?

Not at all worried	1
Not very worried	2
Fairly worried	3
Very worried	4
(Don't know)	8

B39 How often does Jon worry about having his home broken into and something stolen?

All or most of the time	1
Some of the time	2
Just occasionally	3
Never	4
(Don't know)	8

B40 To what extent (if at all) does Jon's worry about having his home broken into and something stolen affect her quality of life?

.....serious effect on the quality of his life,	1
...some effect,	2
or no real effect on the quality of his life?	3
(Don't know)	8

Susan lives alone in a flat in a poor neighbourhood. She often goes to see her brother who lives a few blocks away in the evening. She never thinks about the possibility of being burgled, although she routinely locks her door when she leaves, since she believes this is the sensible thing to do. She has never thought about having a burglar alarm installed.

B41 How worried is Susan about having her home broken into and something stolen?

Not at all worried	1
Not very worried	2
Fairly worried	3
Very worried	4
(Don't know)	8

B42 How often does Susan worry about having her home broken into and something stolen?

All or most of the time	1
Some of the time	2
Just occasionally	3
Never	4
(Don't know)	8

B43 To what extent (if at all) does Susan's worry about having her home broken into and something stolen affect her quality of life?

...serious effect on the quality of her life,	1
...some effect,	2
or no real effect on the quality of her life?	3
(Don't know)	8

C. Trust in justice and the legitimacy of legal authorities

I would now like to ask you some questions about how wrong³³ you consider certain ways of behaving to be. Using this card please tell me how wrong³⁴ it is to...READ OUT...

		Not wrong at all	A bit wrong	Wrong	Seriously wrong	(Don't know)
C1	...make an exaggerated or false insurance claim?	1	2	3	4	8
C2	...buy something you ³⁵ thought might be stolen?	1	2	3	4	8
C3	...commit a traffic offence like speeding or crossing a red light?	1	2	3	4	8

Now just suppose you were to do any of these things in [country]. Please tell me how likely it is that you would be caught and punished³⁶ if you... READ OUT...

		Not at all likely	Not very likely	Likely	Very likely	(Don't know)
C4	...made an exaggerated or false insurance claim?	1	2	3	4	8
C5	...bought something you thought might be stolen?	1	2	3	4	8
C6	..committed a traffic offence like speeding or crossing a red light?	1	2	3	4	8

Now some questions about the police³⁷ in [country].

³³ 'Wrong' in the sense of 'morally wrong'.

³⁴ See Footnote 1.

³⁵ 'You' as in 'the respondent personally'.

³⁶ 'Punished' as in 'punished by the law'; this could be in the form of a prison sentence, fine or any other sentence.

³⁷ Note that a generic term should be used here and consistently throughout the module. The translation should encompass all of the different types / levels of police in [country]. Countries might refer to the translation used at B6 in the core questionnaire. If any country specific examples are required to demonstrate that all the police are to be included (e.g. City guards in

C7 Taking into account all the things the police are expected to do, would you say they are doing a good job or a bad job? Choose your answer from this card.

Very good job	1
Good job	2
Neither good nor bad job	3
Bad job	4
Very bad job	5
(Don't know)	8

Everyone has an opinion about what the police does and how well the police performs its job. But people's knowledge about the police can come from different sources. Some sources of knowledge may be more important than others.

Please, evaluate the following information sources according to their importance in informing you about the police.

READ OUT EACH STATEMENT AND CODE IN GRID

		Not important at all	Not important	Neither important nor unimportant	Impor- tant	Very important	(Don't know)
C8	Personal experience	1	2	3	4	5	8
C9	Friends, family members, neighbours	1	2	3	4	5	8
C10	Education	1	2	3	4	5	8
C11	Television / radio	1	2	3	4	5	8
C12	Newspapers / magazines (incl. their internet versions)	1	2	3	4	5	8
C13	Online newspapers / news portals	1	2	3	4	5	8
C14	Online private pages / blogs / forums	1	2	3	4	5	8
C15	Other (please specify):	1	2	3	4	5	8

Poland) these should be mentioned once here and the respondents should then be informed that 'from now on we will simply say the police in [country]'. Countries should reflect on the questions in the module and consider whether any officials who share a range of powers with the police should be mentioned. Note that groups who only control parking should not generally be included.

ASK ALL

C16 In the past 2 years, did the police in [country] approach³⁸ you³⁹, stop you or make contact with you for any reason?

Yes	1	ASK C17
No	2	GO TO C22
(Don't know)		8

ASK IF HAS BEEN APPROACHED / STOOPED / CONTACTED BY THE POLICE FOR ANY REASON IN PAST 2 YEARS (code 1 at C17)

C17 How dissatisfied or satisfied were you with the way the police treated⁴⁰ you the last time this happened? Choose your answer from this card.

Very dissatisfied	1
Dissatisfied	2
Neither dissatisfied nor satisfied	3
Satisfied	4
Very satisfied	5
(Don't know)	8

ASK IF HAS BEEN APPROACHED / STOOPED / CONTACTED BY THE POLICE FOR ANY REASON IN PAST 2 YEARS (code 1 at C17)

The last time you were stopped by the police, to what extent were ...

		Yes, fully	Yes, to some extent	Not really	Not at all	(Don't know)
C18	... you given a reason for why you had been stopped?	1	2	3	4	8
C19	... you told what would happen next?	1	2	3	4	8
C20	... you treated with respect?	1	2	3	4	8
C21	... the police justified in stopping you?	1	2	3	4	8

³⁸ Approach for any reason (e.g. to ask you for information or because they suspect you have committed a crime or they need to ask you to do something).

³⁹ 'You' as in 'the police approached, stooped or contacted the respondent personally'.

⁴⁰ 'Treated' in the sense of how the police responded to or dealt with the respondent.

C22 In the past 2 years, have made contact with the police in [country] for any reason?

Yes	1	ASK C23
No	2	GO TO C24
(Don't know)	8	

ASK IF THEY HAVE CONTACTED THE POLICE FOR ANY REASON IN PAST 2 YEARS (code 1 at C22)

C23 How dissatisfied or satisfied were you with the way the police treated⁴¹ you the last time this happened? Choose your answer from this card.

Very dissatisfied	1
Dissatisfied	2
Neither dissatisfied nor satisfied	3
Satisfied	4
Very satisfied	5
(Don't know)	8

ASK ALL

Now some questions about whether or not the police in [country] treat⁴² victims of crime equally. Please answer based on what you have heard or your own experience.

C24 When victims report crimes, do you think the police treat rich people worse, poor people worse, or are rich and poor treated equally? Choose your answer from this card.

Rich people treated worse	1
Poor people treated worse	2
Rich and poor treated equally	3
(Don't know)	8

C25 And when victims report crimes, do you think the police treat some people worse because of their race or ethnic group or is everyone treated equally? Choose your answer from this card.

People from a different race or ethnic group than most [country] people treated worse	1
People from the same race or ethnic group as most [country] people treated worse	2
Everyone treated equally regardless of their race or ethnic group	3
(Don't know)	8

⁴¹ 'Treated' in the sense of how the police responded to or dealt with the respondent.

⁴² Treat in the sense of how the police respond to and deal with people.

- ...not at all often, 1
- not very often, 2
- often, 3
- or, very often? 4
- (Don't know) 8

C31 And when dealing with people in [country], how often would you say the police generally explain their decisions and actions when asked to do so?

Would you say...READ OUT...

- ...not at all often, 1
- not very often, 2
- often, 3
- or, very often? 4

(No one ever asks the police to explain their decisions and actions) 5

(Don't know) 8

Now some questions about your duty⁵⁰ towards the police in [country]. Use this card where 0 is not at all your duty and 10 is completely your duty.

To what extent is it your duty to...READ OUT...

		Not at all my duty										Completely (Don't my duty know)	
		00	01	02	03	04	05	06	07	08	09	10	88
C32	...back ⁵¹ the decisions made by the police even when you disagree with them?	00	01	02	03	04	05	06	07	08	09	10	88
C33	...do what the police tell you even if you don't understand or agree with the reasons?	00	01	02	03	04	05	06	07	08	09	10	88
C34	... do what the police tell you to do, even if you don't like how they treat you?	00	01	02	03	04	05	06	07	08	09	10	88

⁴⁹ 'Fair, impartial' - in British English the use of both of these words clarifies the meaning of 'fair' in the context of this question. Countries should ensure that impartiality is conveyed.

⁵⁰ 'Duty' in the sense of a citizen's moral duty to the state.

Please say to what extent you agree or disagree with each of the following statements about the police in [country].

READ OUT EACH STATEMENT AND CODE IN GRID

	Agree strongly	Agree	Neither agree nor disagree	Disagree	Disagree strongly	(Don't know)
C35 The police generally have the same sense of right and wrong ⁵² as I do.	1	2	3	4	5	8
C36 The police stand up for ⁵³ values that are important to people like me.	1	2	3	4	5	8
C37 I generally support how the police usually act.	1	2	3	4	5	8
C38 The decisions and actions of the police are unduly influenced by pressure from political parties and politicians.	1	2	3	4	5	8

Now one last question about the police and things they may or may not do.

⁵¹ Back in the sense of 'support'.

⁵² 'Sense of right and wrong' in terms of 'feeling of morally right or wrong from a personal point of view'.

⁵³ 'Stand up for' in the sense of 'defend/uphold/promote'.

C39 How often would you say that the police in [country] take bribes⁵⁴?

Choose your answer from this card where 0 is never and 10 is always.

Never Always (Don't know)

00 01 02 03 04 05 06 07 08 09 10 88

I am now going to ask you some questions about the courts in [country] that deal with crimes such as house burglary and physical assault. Again please answer based on what you have heard or your own experience.

C40 Taking into account all the things the courts are expected to do, would you say they are doing a good job or a bad job? Choose your answer from this card.

Very good job	1
Good job	2
Neither good nor bad job	3
Bad job	4
Very bad job	5
(Don't know)	8

Everyone has an opinion about what the criminal courts do and how well the courts perform their job. But people's knowledge about the criminal courts can come from different sources. Some sources of knowledge may be more important than others.

Please, evaluate the following information sources according to their importance in informing you about the courts

54 'Bribes' can include ANY unauthorised inducement – whether it is an amount of money and/or something else that is valuable or gives influence.

READ OUT EACH STATEMENT AND CODE IN GRID

		Not important at all	Not important	Neither important nor unimportant	Impor- tant	Very important	(Don't know)
C41	Personal experience	1	2	3	4	5	8
C42	Friends, family members, neighbours	1	2	3	4	5	8
C43	Education	1	2	3	4	5	8
C44	Television / radio	1	2	3	4	5	8
C45	Newspapers / magazines (incl. their internet versions)	1	2	3	4	5	8
C46	Online newspapers / news portals	1	2	3	4	5	8
C47	Online private pages / blogs / forums	1	2	3	4	5	8
C48	Other (please specify):	1	2	3	4	5	8

C49 Please tell me how often you think the courts make mistakes that let guilty people go free? Use this card where 0 is never and 10 is always.

Never											Always	(Don't know)
00	01	02	03	04	05	06	07	08	09	10	88	

C50 How often do you think the courts make fair, impartial decisions based on the evidence⁵⁵ made available to them? Use the same card.

Never											Always	(Don't know)
00	01	02	03	04	05	06	07	08	09	10	88	

⁵⁵ Evidence' refers to the 'testimony' a witness gives verbally in court AND other materials presented to the court.

Now some questions about the chances of different people in [country] being found guilty⁵⁶ of crimes they did not commit.

C51 Suppose two people - one rich, one poor - each appear in court, charged with an identical crime they did not commit. Choose an answer from this card to show who you think would be most likely to be found guilty.

- The rich person is more likely to be found guilty 1
- The poor person is more likely to be found guilty 2
- They both have the same chance of being found guilty 3
- (Don't know) 8

C52 Now suppose two people from different race or ethnic groups each appear in court, charged with an identical crime they did not commit. Choose an answer from this card to show who you think would be most likely to be found guilty.

- The person from a different race or ethnic group than most [country] people more likely to be found guilty 1
- The person from the same race or ethnic group as most [country] people more likely to be found guilty 2
- They both have the same chance of being found guilty 3
- (Don't know) 8

Now a question about judges and things they may or may not do.

C53 Using this card please tell me how often you would say that judges in [country] take bribes?

- | | | | | | | | | | | | | |
|-------|----|----|----|----|----|----|----|----|----|----|--------|--------------|
| Never | | | | | | | | | | | Always | (Don't know) |
| 00 | 01 | 02 | 03 | 04 | 05 | 06 | 07 | 08 | 09 | 10 | | 88 |

Using this card, please say to what extent you agree or disagree with each of the following statements about [country] nowadays.

READ OUT EACH STATEMENT AND CODE IN GRID

	Agree strongly	Agree	Neither agree nor disagree	Disagree	Disagree strongly	(Don't know)
C54 Courts generally protect the interests of the rich and powerful above those of ordinary people.	1	2	3	4	5	8

⁵⁶ 'Found guilty' in the sense of being formally convicted by the courts.

C55	People who break the law should be given much harsher sentences than they are these days.	1	2	3	4	5	8
C56	Everyone has a duty to back the final verdict of the courts.	1	2	3	4	5	8
C57	All laws should ⁵⁷ be strictly obeyed.	1	2	3	4	5	8
C58	Doing the right thing ⁵⁸ sometimes means breaking the law.	1	2	3	4	5	8
C59	The decisions and actions of the courts are unduly influenced by pressure from political parties and politicians.	1	2	3	4	5	8
C60	The courts are generally more concerned ⁵⁹ about offenders' rights than victims' rights.	1	2	3	4	5	8
C61	People who break the law should be given harsher sentences by the courts.	1	2	3	4	5	8
C62	The courts generally pass sentences ⁶⁰ that reflect the crime ⁶¹ .	1	2	3	4	5	8

⁵⁷ 'Should' - in the sense of 'must'.

⁵⁸ 'Doing the right thing' in the sense of 'morally from a personal point of view'.

⁵⁹ 'More concerned' - as in 'give more weight to'.

⁶⁰ 'Sentences' as in 'punishment that a judge gives to someone who has been found guilty of a crime'; 'sentences' are not restricted to prison but also encompass fines, community service sentences etc.

⁶¹ 'reflect the crime' – as in appropriate for the seriousness of the crime.

The following questions ask about the sentences the courts in [country] give when dealing with those found guilty of crimes such as burglary and physical assault.

C64 People have different ideas about the sentences which should be given to offenders. Take for instance the case of a 25 year old man who is found guilty of burglary for the second time. This time, he has stolen a TV. Which one of the following sentences do you think he should receive?

INTERVIEWER NOTE: If respondent wants to choose more than one sentence, record the sentence from the highest point of the list.

If asked what a suspended sentence or community sentence is please say:

‘A suspended prison sentence is only served if the offender commits another crime or breaks other specific conditions during the suspended sentence period’

‘Community service refers to a sentence OTHER than a prison sentence or fine where the offender is asked to perform a task or tasks that benefit the community e.g. cleaning litter from the streets’

Prison sentence	1	ASK C65
Suspended prison sentence	2	GO TO C66
Fine	3	
Community service	4	
Any other sentence	5	
(Don't know)	8	

ASK IF PRISON SENTENCE GIVEN (code 1 at C64)

C65 And which of the answers on this card comes closest to the length of time you think he should spend in prison? Please use this card.

Less than 1 month	01
1-6 months	02
7 months – 11 months	03
About 1 year	04
About 2 years	05
About 3 years	06
About 4 years	07
About 5 years	08
6-10 years	09
More than 10 years	10
(Don't know)	88

ASK ALL

C66 We would like to know your view on the sentence that this person would actually be given by the courts in [country]. Which of the following sentences do you think he would receive from the courts in [country]?

INTERVIEWER NOTE: If respondent wants to choose more than one sentence, record the sentence from the highest point of the list.

If asked what a suspended sentence or community sentence is please say:

‘A suspended prison sentence is only served if the offender commits another crime or breaks other specific conditions during the suspended sentence period’

‘Community service refers to a sentence OTHER than a prison sentence or fine where the offender is asked to perform a task or tasks that benefit the community e.g. cleaning litter from the streets’

Prison sentence	1	ASK C67
Suspended prison sentence	2	GO TO C68
Fine	3	
Community service	4	
Any other sentence	5	
(Don't know)	8	

ASK IF PRISON SENTENCE GIVEN (code 1 at C66)

C67 Which of the answers on this card comes closest to the length of time you⁶² think he would spend in prison?

Less than 1 month	01
1-6 months	02
7 months – 11 months	03
About 1 year	04
About 2 years	05
About 3 years	06
About 4 years	07
About 5 years	08
6-10 years	09
More than 10 years	10
(Don't know)	88

⁶² ‘You’ as in ‘the respondent personally’

ASK ALL

C68 Overall, would you say that sentences handed down by the courts are...

READ OUT...

...much too tough,	1
too tough,	2
about right,	3
too lenient,	4
or, much too lenient?	5
(Don't know)	8

ASK ALL

Now some questions about what you would do if you were the only witness to a crime. The next few questions do not have a show card.

C69 Imagine that you were out⁶³ and saw someone push a man to the ground and steal his wallet. How likely would you be to call⁶⁴ the police? Would you be...

READ OUT...

...not at all likely,	1
not very likely,	2
likely,	3
or, very likely?	4
(Don't know)	8

C70 How willing⁶⁵ would you be to identify the person who had done it? Would you be...READ OUT...

...not at all willing,	1
not very willing,	2
willing,	3
or, very willing?	4
(Don't know)	8

C71 And how willing would you be to give evidence⁶⁶ in court against the accused? Would you be...READ OUT...

...not at all willing,	1
not very willing,	2

⁶³ 'Out' as in 'not at one's home'.

⁶⁴ 'Call' refers to telephoning the police.

⁶⁵ 'Willing' in the sense of 'freely choose to'.

⁶⁶ 'Evidence' refers to the 'testimony' a witness gives verbally in court.

willing,	3
or, very willing?	4
(Don't know)	8

Now some questions about things you might have done.

Using this card please tell me how often you have done each of these things in the last five years? How often have you...READ OUT...

	Never	Once	Twice	3 or 4 times	5 times or more	(Don't know)
C72 ...made an exaggerated or false insurance claim?	1	2	3	4	5	8
C73 ...bought something you thought might be stolen?	1	2	3	4	5	8
C74 ...committed a traffic offence like speeding or crossing a red light?	1	2	3	4	5	8

D. Self-control, moral norms and instrumental incentives

D1 Would you ever take goods from a shop without paying for them?

Yes	1
No	2
(Don't know)	8

D2 Please imagine you would have stolen clothes priced at 150 EUR [replace with local currency if not EUR] from a shop. How valuable are these clothes to you? Would you say you were...READ OUT...

...not at all valuable,	1
not very valuable,	2
fairly valuable,	3
extremely valuable,	4
(Don't know)	8

D3 How likely would it be that you are able to remove the electronic anti-theft device from clothes? Would you say it was...READ OUT...

...not at all likely,	1
not very likely,	2
likely,	3

or, very likely?	4
(Don't know)	8

D4 Please imagine that someone tries to steal clothes priced at 150 EUR from a shop. This person gets caught. What sanction is to be expected. Would you say it is...READ OUT...

...no real consequences,	1
small monetary fine,	2
high monetary fine,	3
probation,	4
not quite sure, but severe punishment,	5
(Don't know)	8

D5 Now envisage that you would try to steal something from a shop. How likely would it be that you will get caught? Would you say it was...READ OUT...

...not at all likely,	1
not very likely,	2
likely,	3
or, very likely?	4
(Don't know)	8

Using this card, please say to what extent you agree or disagree with each of the following statements.

		Agree strongly	Agree	Neither agree nor disagree	Disagree	Disagree strongly	(Don't know)
D6	It is a bad thing to steal goods worth 5 EUR from a large department store	1	2	3	4	5	8
D7	It is a bad thing to steal goods worth 50 EUR from a large department store	1	2	3	4	5	8

Now I would like you to answer some questions about how you are as a person, for example, if you easily get upset, easily get angry, if you care about what others think of you, and if you think a lot about what is going to happen to you in the future. Using this card, please say how much you agree or disagree with each of the following statements.

		Agree strongly	Agree	Neither agree nor disagree	Disagree	Disagree strongly	(Don't know)
D8	When I am really angry, other people better stay away from me	1	2	3	4	5	6
D9	I often act on the spur of the moment without stopping to think	1	2	3	4	5	6
D10	I sometimes find it exciting to do things that may be dangerous	1	2	3	4	5	6
D11	I don't devote much thought and effort preparing for the future	1	2	3	4	5	6
D12	Sometimes I will take a risk just for the fun of it	1	2	3	4	5	6
D13	I often try to avoid things that I know will be difficult	1	2	3	4	5	6
D14	I never think about what will happen to me in the future	1	2	3	4	5	6
D15	I lose my temper pretty easily	1	2	3	4	5	6

E. Ideological positions and psychological needs

We are now interested in your views more broadly, starting with society nowadays. Please rate your agreement or disagreement to the following statements. Use the scale provided.

	Agree strongly	Agree	Neither agree nor disagree	Disagree	Disagree strongly	(Don't know)
E1 We live in a dangerous society in which good, decent, and moral people's values and way of life are threatened by bad people	1	2	3	4	5	6
E2 We live in a society that is unsafe, unstable, and insecure where good and decent people are the exception rather than the rule	1	2	3	4	5	6
E3 People don't know the difference between right and wrong anymore	1	2	3	4	5	6
E4 I'm worried about where morality is headed in society	1	2	3	4	5	6

Staying with the topic of society nowadays, please rate your agreement or disagreement to the following statements.

	Agree strongly	Agree	Neither agree nor disagree	Disagree	Disagree strongly	(Don't know)
E5 Obedience and respect for authority are the most important values children should learn	1	2	3	4	5	6
E6 The authorities should be obeyed because they are in the best position to know what is good for our country.	1	2	3	4	5	6
E7 Traditions are the foundation of a healthy society and should be respected	1	2	3	4	5	6
E8 It is important that we preserve our traditional values and moral standards	1	2	3	4	5	6

E9	It is necessary to use force against people who are a threat to authority	1	2	3	4	5	6
E10	Our society needs tougher government and stricter laws	1	2	3	4	5	6

Read each of the following statements and decide how much you agree with each according to your beliefs and experiences.

		Agree strongly	Agree	Neither agree nor disagree	Disagree	Disagree strongly	(Don't know)
E11	I enjoy having a clear and structured mode of life	1	2	3	4	5	6
E12	I don't like to go into a situation without knowing what I can expect from it	1	2	3	4	5	6
E13	I usually make important decisions quickly and confidently.	1	2	3	4	5	6
E14	I don't like situations that are uncertain.	1	2	3	4	5	6
E15	I dislike questions which could be answered in many different ways.	1	2	3	4	5	6

F. Socio-demographics and the item-count technique

F1 I am now going to read you a list of five [six] things that people may do or that may happen to them. Please listen to them and then tell me how many of them you have done or have happened to you in the last 12 months. Do not tell me which ones are and are not true for you. Just tell me how many you have done at least once.

[SPLIT BALLOT: RANDOM HALF GETS ONLY THE FIRST FIVE ITEMS, OTHER RANDOM HALF GETS ALL THE SIX ITEMS]

Attended a religious service, except for a special occasion like a wedding or funeral.

Went to a sporting event.

Attended an opera.

Visited a country outside [your country]?

Had personal belongings such as money or a mobile phone stolen from you or from your house.

Bought something you thought might have been stolen.

WRITE IN:

(Don't know) 8

F2 Which phrase on this card best describes the area where you live?

- A big city 1
- The suburbs or outskirts of a big city 2
- A town or a small city 3
- A country village 4
- A farm or home in the countryside 5
- (Don't know) 8

F3 What year were you born?

WRITE IN:

(Don't know) 88

F4 Gender

F5 About how many years of education have you completed, whether full-time or part-time? Please report these in full-time equivalents and include compulsory years of schooling.

INTERVIEWER NOTE: round answer up or down to the nearest whole year.

WRITE IN:

(Don't know) 88

F6 Using this card, which of these descriptions applies to what you have been doing for the last 7 days? Select all that apply. PROMPT Which others?

CODE ALL THAT APPLY

- in paid work (or away temporarily) (employee, self-employed, working for your family business) 01
- in education, (not paid for by employer) even if on vacation 02
- unemployed and actively looking for a job 03
- unemployed, wanting a job but not actively looking for a job 04
- permanently sick or disabled 05
- retired 06
- in community or military service⁶⁷ 07
- doing housework, looking after children or other persons 08
- (other) 09
- (Don't know) 88

⁶⁷ This code does not apply to JOBS in the military but to compulsory military service only.

F7 Using this card, please tell me which letter describes your household's total income, after tax and compulsory deductions, from all sources? If you don't know the exact figure, please give an estimate.

Use the part of the card that you know best: weekly, monthly or annual income⁶⁸.

J	01
R	02
C	03
M	04
F	05
S	06
K	07
P	08
D	09
H	10
(Refused)	77
(Don't know)	88

NOTE ON FRAMING DECILE INCOME QUESTION, CATEGORIES AND CARD

An income show card should be devised with approximate weekly, monthly and annual amounts. You should use ten income range categories, each corresponding broadly to DECILES OF THE ACTUAL HOUSEHOLD INCOME RANGE in your country. These figures should be derived from the best available source for your country. The data source used should match the requirement of the question i.e. deciles of household income for all households (not for example average households or just households with children). Using the median income as the reference point, 10 deciles should be calculated with the median itself at the top of the fifth decile (Category F). The figures should not appear to be too exact. Minor rounding can be employed to achieve this if necessary.

Please note that a show card must always be used at this question. The ten rows on the showcard should display the income ranges selected and be preceded by the ten letters used above (or their Cyrillic equivalent) which helps to ensure respondent confidentiality. Each country can choose whether to include weekly, monthly or annual amounts on the showcard or include more than one of these as appropriate. The text in the last sentence of F32 (above) should be rephrased to match the solution selected.

F8 Which of the descriptions on this card comes closest to how you feel⁶⁹ about your household's income nowadays?

Living comfortably on present income	1
Coping on present income	2

⁶⁸ The actual amounts must NOT appear on the questionnaire. Only the letters and the corresponding numeric codes.

⁶⁹ "Feel": 'describe', 'view' or 'see'.

Finding it difficult on present income	3
Finding it very difficult on present income	4
(Don't know)	8

F9 In politics people sometimes talk of "left" and "right". Using this card, where would you place yourself on this scale, where 0 means the left and 10 means the right?

00	01	02	03	04	05	06
	07	08	09	10	88	

APPENDIX 3: TECHNICAL AND FIELDING REPORTS

Bulgaria

Survey method:	Face-to-face in home interview with respondent
Sample type and size:	The sampling model used is of a two-stage cluster sample. Clusters (sampling points) represent electoral sections as of last Parliamentary elections (July 2009). Out of 11632 sections 126 sections have been selected at random (first stage). In each electoral section 8 respondents have been interviewed (second stage). Respondents at second stage have been selected using a random walk procedure based in randomly selected start address. Total number of sampling points: 126. Number of responders in each sampling point: 8.
Completed interviews and response rates:	Contacted respondents: 1599
	Temporary absence: 79
	Refusals: 520
	Other
	Completed interviews: 1000
Response rate:	63%
Fieldwork dates:	October 1 – October 20, 2010
Interviewer training:	Briefing session with local coordinators which included an overview of survey methodology, specific features of the questionnaire and of specific questions, sampling methodology, specific fieldwork requirements, and also reconstruction of a fieldwork situation.
Number of interviewers:	94 interviewers participated in fieldwork. Average number of interviews per interviewer: 11.
Fieldwork control:	Work of interviewers in the field has been supervised by local coordinators. After the end of fieldwork 10% of the sample has been back checked by phone.
Data verification:	All questionnaires were subjected to a logical review before data entry. The logical review was carried out by the VR staff and included: Fulfillment of all questionnaire instructions; Logical correspondence between answers of different questions; Control for accuracy in the cases where there is objective information (e.g. questions on size of the city/village, administrative region, number of the cluster).
Contactors:	Vitosha Research, Sofia

Acceptance of questionnaire

As a whole the interviewers reported that there were no serious problems with the questionnaire, the most of the respondents understood most of the questions without problems. The main problems are listed below. The interviewers report that the respondents found the questionnaire very long, laborious and quite boring. The main reason for that according to some interviewers is the relatively high register of the language used for the questions – i.e. the questions sound too academic or too elevated to the general public. Many respondents do not have the general knowledge about law that is required to understand some of the questions. This conclusion was made during the cognitive interviewing too when part of the respondents were unfamiliar with distinction between the functions of court (judges) and prosecution service and with the obligations and rights of the latter.

The questions have been perceived as a bit repetitive and some respondents had the feeling that they are being asked the same thing over and over again. The interviewers considered the number of show-cards as excessive and felt this influenced the dynamics of the interview.

The questionnaire was overall a bit difficult for less educated people as well as some of the Roma respondents. Generally, people living in villages were more open to the interviewers, responded more friendly to the questions and were more cooperative. The subjective feeling of some interviewers is that people living in villages are less concerned about crime, although house burglary is quite common in the villages in some parts of the country and this often causes tension between Roma and Bulgarian people.

Problems with particular questions

Block B: B12–B34 these questions elicited some of the remarks about “too academic style” that are summarized above as a general comment.

B35–B43 this group of questions was the second most often noted problem with the questionnaire. According to the interviewers, the stories and explanations were too long and boring. Some respondents had problems focusing their attention on the story from the questionnaire and spontaneously recalled similar stories. Some respondents found the stories for the Bulgarian context. Some respondents cannot properly differentiate between a robbery and a burglary.

Block C: This group of questions was overall quite hard for the respondents. In many cases people perceive “the police” as traffic police because most often people have experience with the traffic police.

C41 – respondents had problems answering this question because they lack “personal experience” with the criminal courts. C64 and C66 elicited many spontaneous answers “Suspended prison sentence” in combination with the

length of the sentence, although both questions had filters and did not allow length estimation for any other option than “prison sentence”.

Block D: this is the most problematic part of the questionnaire.

Questions D1–D3 and D5 elicited very strong reactions from many respondents because when they responded with “no” to D1, they were still asked to imagine that they stole something. Their response was “I would never do such a thing!” and a strong refusal to answer (which however was not provided as a possible option in the questionnaire). The overall attitude of some respondents changed after D1–D5 and they became more hostile and uncooperative. Overall, females demonstrated stronger reactions than males to the problematic D1–D5 part of the survey which was reflected quantitatively as more answers “I don’t know” to these questions for females.

Italy

Survey method:	CAPI	
Sample type and size:	<p>The sample was composed by individuals aged 16 years old and over, representative of the Italian population. The sampling procedure followed was a Stratified Random Sample for the following quotas:</p> <p>Regions and City Sizes (interlocked)</p> <p>Gender and Age (interlocked)</p> <p>Level of education</p> <p>Occupation</p> <p>In each of the above quota the sampling points have been selected randomly.</p> <p>The total number of sampling points involved in the Survey was: 111.</p>	
Completed interviews and response rates:	Contacted respondents:	1833
	Temporary absence:	954
	Refusals:	357
	Other	
	Completed interviews:	522
	Response rate:	28%
Fieldwork dates:	October 29 – November 19, 2010	
Interviewer training:	<p>Before start of fieldwork GfK Eurisko interviewers have been instructed through telephone briefing sessions. They were informed about the objective of the survey and instructed on the questionnaire flow and specific issues regarding each question.</p>	
Number of interviewers:	111 interviewers participated in fieldwork. Average number of interviews per interviewer: 4.7	
Fieldwork control:	<p>GfK Eurisko supervisors followed the working process of the fieldwork and controlled that the sampling plan was correctly respected.</p> <p>After the end of the fieldwork, 5% of the completed questionnaires and 20% of the interviewers have been selected at random and called back to verify that the interviews had been correctly carried out.</p>	
Data verification:	<p>The questionnaire, that was programmed (CAPI), was checked by the GfK Eurisko researchers prior to actual fielding, in order to check that all questions were correctly scripted and to verify the consistency of all questions (i.e. flow and filters).</p> <p>After the end of the fieldwork, data were processed in a SPSS file that was further re-checked to control the coherence and the filtered questions.</p>	
Contactors:	GfK Eurisko	

Acceptance of questionnaire

The interviewers reported a very good level of interest among the respondents to participate in this Survey. The great majority of the respondents considered the subject very up to date and relevant in the context of Italian society and appreciated to have the possibility to state their opinion on it. Older people were happier to participate than youngsters. In particular, the section that respondent found most interesting were section B and section C.

In general, respondents found the questionnaire quite easy and fluent. Most of the questions were clear and the language was appropriate for the most part of the sample.

The interviewers didn't mentioned particular difficulties in carrying out this survey. The only difficulties have been found with few people having a low level of education in relation to the type of language used, but it was a problem not widespread. Even if the questionnaire was interesting and clear, many respondents found it a bit too long and somehow repetitive.

According to the interviewers the only section that generated a general sense of annoyance among the respondents was section D.

Problems with particular questions

B35 to B43: in part of the sample these questions generated difficulties in empathizing with the characters of the imaginary stories (far from their actual experience). Some respondents were a bit surprised when asked these questions because the answers seemed obvious to them. In addition, in many cases the interviewers reported that it was necessary to repeat the stories because they were a bit too long. Regarding specifically the stories exposed, few respondents noticed that they only referred to poor areas/neighbourhoods, while in their opinion a lot of crimes are committed also in rich areas, so they considered those cases not very comprehensive or not realistic enough.

B19–B20: these questions engendered in part of the sample bother and concern when thinking of possible experiences they had in the past or possible experiences that could occur to them in the future.

C16: seems to bother some interviewees because it was considered too personal and intimate. C72–C73–C74: these questions bothered the majority of the respondents and some found them quite offensive.

D1–D5: seem to generate embarrassment. To some respondents these questions seem a bit strange because they thought that nobody would have answered such questions affirmatively. Many respondents were felt uncomfortable imagining themselves committing a crime. In other cases the questions generated hilarity (due to embarrassment or credibility).

Lithuania

Survey method:	Face-to-face in home interview.												
Sample type and size:	<p>The sample was composed by individuals aged 16 years old and over. multistage, random sample. The selection procedure of respondents ensures that every inhabitant (16 yrs. and older) of Lithuania has equal probability to be interviewed.</p> <p>Survey covered the regions in Lithuania: Vilnius, Kaunas, Klaipeda, Siauliai, Panevezys, Marijampole; Alytus, Sakiai, Telsiai, Mazeikiai, Pakruojis, Akmene, Silute, Kedainiai, Utena, Taurage, Kupiskis, Rokiskis, Svencionys, Ukmerge, Moletai and Raseiniai districts. Survey was conducted in 18 towns and 54 villages.</p> <p>The total number of sampling points involved in the Survey was: 90.</p>												
Completed interviews and response rates:	<table border="1"> <tr> <td>Contacted respondents:</td> <td>2762</td> </tr> <tr> <td>Temporary absence:</td> <td>699</td> </tr> <tr> <td>Refusals:</td> <td>889</td> </tr> <tr> <td>Other</td> <td>153</td> </tr> <tr> <td>Completed interviews:</td> <td>1021</td> </tr> <tr> <td>Response rate:</td> <td>37%</td> </tr> </table>	Contacted respondents:	2762	Temporary absence:	699	Refusals:	889	Other	153	Completed interviews:	1021	Response rate:	37%
Contacted respondents:	2762												
Temporary absence:	699												
Refusals:	889												
Other	153												
Completed interviews:	1021												
Response rate:	37%												
Fieldwork dates:	October 15 – October 27, 2010												
Interviewer training:	Interviewers in Vilnius were trained at “Vilmorus” office and interviewers in other loctions – by telephone												
Number of interviewers:	83												
Fieldwork control:	After the end of fieldwork 10% of inteviews were controlled by phone: respondent's selection procedure, length of interview, etc.												
Data verification:	<p>Completed questionnaires were checked for logic prior the data entry by Vilmorus staff.</p> <p>After the data entry the data file was checked for consistency (skip&fill rules, routing, single/multiple answer questions).</p>												
Contactors:	Market and Opinion Research Center “Vilmorus”												

Acceptance of questionnaire

Questionnaire was quite interesting but too long in respondents' opinion. All questions were understandable for respondents. The use of show cards is considered excessive. Show cards were used in one case and not used in similar questions with same quantity of options. For example questions C1-C3 with cards, questions C8-C15 without cards.

Some question aspects were difficult to apply in Lithuania: group of questions concerning different treatment on race base – there is very small percentage of population of different race than majority so respondents just don't have information to maintain their opinion in this case.

Problems with particular questions

Block A. Not all respondents read newspapers or watch TV. In this respect the questionnaire does not provide enough opportunities to adequately capture media behaviour which would include use of other media.

Block B. For questions B3 and B8 answer options could be reformulated to better reflect respondent thinking and local routines.

Respondents reacted sensitively to questions D2 and D5. These questions made assumptions that respondent has stolen something. Sometimes respondents felt insulted. Questions C64 and C66 have been perceived similarly.

Methodological lessons from Bulgaria, Italy and Lithuania

Length of survey and overall acceptance. On the whole the survey was well accepted by respondents, as it relates to an important sphere of everyday life – personal security and moral standards of society. The survey is, however, a bit too long. This is understandable in terms in view of the overall objectives of the project and the need to test different hypotheses for the main indicators. Project objectives are not a motivation factor for respondents and it would be good to seriously consider a reduction of the questionnaire.

Showcard use is a technical issue that needs additional attention. Excessive use of show cards seems, according to interviewer reports, to interfere with the regular “flow” of the interview and acts as a distraction factor. A simple (but not easy fulfil) solution would be to simplify scales (reduce the range) and preferably to use similar scales on most questions. Using agreement-disagreement scales is one possible option and would require a slight rewording of questions. Of course such an alternative could only be considered, if it does not create comparison problems with ESS or other surveys.

Media behaviour questions are another technical issue that needs specific attention. The problem the pilot surveys have shown is that specific types of media behaviour are not adequately captured. This block of questions is newspaper and TV centred. Other types of media behaviour do not have a proper coverage and question routing. The recommendation in this respect would be to combine two blocks of questions: intensity media exposure

(including all types of media) and media evaluation in order to fully cover all types of media usage.

Questions about the police seem problematic in some countries because of the different forms of organization of security services. In addition, many respondents are not fully aware of the specific organization of the police forces in their own country. They usually perceive “police” as including officers that are most often publicly identified in media and/or visibly appear as representatives of this sector, e.g. traffic police and police patrols in the streets. At least in some countries unprompted awareness about the specific services included in the term “police” is most probably not very high. Adding variations between countries introduces further complexity to experience and evaluations of specific respondents in specific countries. In view of these pilot findings, the more general assessments of the work of police services (C29–C39) should be considered with greater attention. More generally, a redesign of this section could be considered in order to reflect direct experience of respondents with specific types of police officers.

The wording of Section D questions (especially D1–D5) seems problematic to respondents in all countries. People perceive interviewing as a mostly formal communication, and, in the context of this scenario, it proves difficult for them to “enter the role of a criminal”. People who are more sensitive and less flexible in their social behaviour feel offended and embarrassed. According to interviewer reports this has had a dual effect. First, it is difficult to say how trustworthy responses to this group of questions are. Second, this specific section seems to negatively influence confidence and attitude towards the questions which follow. Similar, but less pronounced is the effect of imaginary situations (section B). Though the situations respondents are asked to imagine are not embarrassing, they seem to stand out from the regular flow of simpler and more straightforward questions. In view of interviewer reports that some respondents ask to have the story repeated, the trustworthiness of responses should be considered carefully.

France

Technical Report

1. Survey method

A telephone survey was conducted for those 18 years and older living in metropolitan France.

1,503 individuals were surveyed

Mean length of the questionnaire: 25 minutes

Date: 24th of February to the 18th of March

The sample was divided into two sub-samples:

1/ A whole France subsample

2/ A subsample restricted to the département of Seine-Saint-Denis

According to the quota method, the survey was conducted so that each sub-sample will be representative according to the following variables:

Gender

Age in four categories (15-24, 25-44, 45-59, 60 +)

Socio-professional categories in 3 categories (higher, lower, economically inactive)

Region (9 zones)

City size (5 categories)

The number of persons in the household

Educational attainment

The samples were weighted to improve each sample's representativeness of the adult population it was designed to cover.

2. Phone contacts

Refusal rates were higher in Seine-Saint-Denis. The more urban character of the Seine-Saint-Denis subsample largely explains the greater number of refusals. Furthermore, the département of Seine-Saint-Denis includes a greater number of foreigners (22% versus 6% for France as a whole), who tend to be more reluctant to participate because of language difficulties.

Table 1. Phone contacts

	FRANCE		SEINE-SAINT-DENIS	
	Number	%	Number	%
Total available addresses	15 000	100	15 000	
Success	751	7	752	6
Contacted	1852	17	690	6
Failure	8063	75	10512	87
Refusal to answer	3742	35	4924	41
Wrong address	2127	20	2472	21

3. Duration

Mean length = 25 minutes

Max: 53 minutes

Min: 5 min

72% of the interviews lasted between 20 and 28 minutes.

Younger people and students were quicker at answering the questionnaire.

4. Quotas

The following table shows that the quota sample worked well, despite the difficulties concerning the level of diploma. Special attention has been paid to this quota variable so as to reach the objectives. The maximal difference to the objective for the specific category of a given quota variable is 0.1%.

Table 2. Quota : objectives and results for each subsample

		France					SSD				
		OBJ.		RES.			OBJ.		RES.		
		Nb	%	Nb	%	Diff.	Nb	%	Nb	%	Diff.
		750	100%	751	100%	1	750	100%	752	100%	2
GENDER	Male	357	48%	347	46%	-10	361	48%	363	48%	2
	Female	393	52%	404	54%	11	389	52%	389	52%	0
AGE	18-29	147	20%	134	18%	-13	181	24%	172	23%	-9
	30-44	202	27%	226	30%	24	229	31%	231	31%	2
	45-59	195	26%	187	25%	-8	194	26%	197	26%	3
	60+	206	27%	204	27%	-2	146	19%	152	20%	6
DIPLOMA	No diploma	136	18%	122	16%	-14	207	28%	183	24%	-24
	< Bac	304	41%	298	40%	-6	251	33%	255	34%	4
	> Bac	274	37%	299	40%	25	251	33%	279	37%	28
	Student	36	5%	32	4%	-4	41	5%	35	5%	-6
REGION	Paris	139	19%	162	22%	23					
	Paris region West	71	9%	75	10%	4					
	Paris region East	60	8%	62	8%	2					
	North	48	6%	49	7%	1					
	West	101	13%	97	13%	-4					
	East	65	9%	58	8%	-7					
	South-West	84	11%	75	10%	-9					
	South-East	90	12%	91	12%	1					
	Mediterranean	92	12%	82	11%	-10					
CITY SIZE	rural town	189	25%	192	26%	3					
	< 20 000 inh.	127	17%	117	16%	-10					
	20 to 200 000	98	13%	96	13%	-2					
	> 200 000 inh.	213	28%	195	26%	-18					
	Paris agglo.	123	16%	151	20%	28					
SOCIO- PROF.	SP ++	175	23%	169	23%	-6	173	23%	185	25%	12
	SP --	273	36%	277	37%	4	314	42%	305	41%	-9
	Econ. inactive	302	40%	305	41%	3	263	35%	262	35%	-1
PERSONS /	1	249	33%	212	28%	-37	232	31%	206	27%	-26

HOUSEHO.	2	247	33%	269	36%	22	202	27%	211	28%	9
	3	111	15%	115	15%	4	124	17%	128	17%	4
	4+	143	19%	155	21%	12	192	26%	207	28%	15

Fielding Report

The French survey focused on ethnicity, so the French questionnaire is not the exact equivalent of the pilot surveys carried out in the countries discussed above. We paid special attention, in translating and sometimes adapting the questions for the French public. For example, we used simple words available to the French public at large, but also referred to themes or issues which appear to be salient in the French context.

Given the interest indifferences between ethnic groups, the questionnaire focussed on attitudes and experience of the agency with which people have most experience and contact – the police. Attitudes and experience were covered in more depth than in the other pilot surveys. The items on attitudes to the courts were largely dropped, although the question on penalties for burglary was retained.

The survey company outlined that the interviewees were interested in the theme of the survey and answering questions enthusiastically; and that no question was problematic.

HEUNI Reports

69. Organised crime, corruption and the movement of people across borders in the new enlarged EU: A case study of Estonia, Finland and the UK. Jon Spencer, Rose Broad, Kauko Aromaa et. al. Helsinki 2011. Web-publication.
68. Trafficking for Forced Labour and Labour Exploitation in Finland, Poland and Estonia. Anniina Jokinen, Natalia Ollus and Kauko Aromaa (eds.). Helsinki 2011.
67. Ehdoilla millä hyvänsä. Työperäinen ihmiskauppa ja ulkomaalaisten työntekijöiden hyväksikäyttö Suomessa. Anniina Jokinen, Natalia Ollus ja Minna Viuhko. Helsinki 2011.
66. Tuhansien iskujen maa – Miesten kokema väkivalta Suomessa. Markku Heiskanen & Elina Ruuskanen. Helsinki 2010. Verkkojulkaisu/Web publication.
65. Survey of United Nations and other Best Practices in the Treatment of Prisoners in the Criminal Justice System: Proceeding of the workshop held at the Twelfth United Nations Congress on Crime Prevention and Criminal Justice Salvador, Brazil, 12-19 April 2010. Kauko Aromaa & Terhi Viljanen 2010.
64. International Statistics on Crime and Justice. Edited by S. Harrendorf, M. Heiskanen, S. Malby. Helsinki 2010.
63. Syyttäjiin ja tuomareihin kohdistunut epäasiallinen vaikuttaminen Suomessa 2007-2008. Mika Junninen & Kauko Aromaa. Helsinki 2010. English summary. Verkkojulkaisu/Web-publication.
62. Human Trafficking and Organised Crime. Trafficking for sexual exploitation and organised procuring in Finland. Minna Viuhko and Anniina Jokinen. Helsinki 2009
61. Corruption on the Finnish - Russian border. Experiences and observations of Finnish and Russian civil servants and business persons on corruption on the border between Finland and Russia. Kauko Aromaa et al. Helsinki 2009.
60. Korruptio Suomen ja Venäjän rajalla. Suomalaisten viranomaisten näkemyksiä korruptiosta itärajalla. Minna Viuhko and Martti Lehti. Helsinki 2009.
59. JUSTIS Project Working Papers. Review of Need: Indicators of Public Confidence in Criminal Justice for Policy Assessment. Anniina Jokinen, Elina Ruuskanen et al. Helsinki 2009.
58. Suomalaisten vankiloiden turvallisuus. Mika Junninen Helsinki 2008. Joint publication with the Criminal Sanctions Agency Finland. English description only.
57. Hate Crime. Papers from the 2006 and 2007 Stockholm Criminology Symposiums Joanna Goodey and Kauko Aromaa (eds.). Helsinki 2008.
56. Victimization Surveys in Comparative Perspective. Kauko Aromaa and Markku Heiskanen (eds.). Helsinki 2008.
55. Crime and Criminal Justice Systems in Europe and North America 1995-2004. Kauko Aromaa and Markku Heiskanen (eds.). Helsinki 2008.
54. Service Provision for Detainees with Problematic Drug and Alcohol Use in Police Detention. A Comparative Study of Selected Countries in the European Union. Morag MacDonald et al. Helsinki 2008.
53. For the Rule of Law: Criminal Justice Teaching and Training @cross the World. Kauko Aromaa and Slawomir Redo (eds.). Helsinki 2008.
52. Restorative Justice Theory and Practice: Addressing the Discrepancy. Theo Gavrielides. Helsinki 2007.
51. Violence Against Women in Finland (English summary) Minna Piispa, Markku Heiskanen, Juha Kääriäinen and Reino Sirén. Helsinki 2006.
50. International Key Issues in Crime Prevention and Criminal Justice - Papers in celebration of 25 years of HEUNI. Edited by Kauko Aromaa and Terhi Viljanen. Helsinki 2006.
49. Maximizing the Effectiveness of the Technical Assistance Provided in the Fields of Crime Prevention and Criminal Justice. Edited by Margaret Shaw and Yvon Dandurand. Helsinki 2006.
48. Penal Policy, Justice Reform and Social Exclusion: Plenary presentations held at the Fifth Annual Conference of the European Society of Criminology, Krakow, Poland 2005. Edited by Kauko Aromaa. Helsinki 2007.

47. Adventurers and Risk-Takers: Finnish professional criminals and their organisations in the 1990s cross-border criminality. Mika Junninen. Helsinki 2006.
46. Enhancing International Law Enforcement Cooperation, including Extradition Measures. Edited by Kauko Aromaa and Terhi Viljanen. Helsinki 2005.
45. A Study of the Health Care Provision, Existing Drug Services and Strategies Operating in Prisons in Ten Countries from Central and Eastern Europe. Morag MacDonald. Helsinki 2005.
44. Crime and Crime Control in an Integrating Europe. Plenary presentations held at the Third Annual Conference of the European Society of Criminology, Helsinki 2003. Edited by Kauko Aromaa and Sami Nevala. Helsinki 2004.
43. Self-Reported Juvenile Delinquency in England and Wales, the Netherlands and Spain. Rosemary Barberet, Benjamin Bowling, Josine Junger-Tas, Cristina Rechea-Alberola, John van Kesteren, Andrew Zuruwan. Helsinki 2004.
42. Organised crime, Trafficking, Drugs: Selected papers presented at the Annual Conference of the European Society of Criminology, Helsinki 2003. Edited by Sami Nevala and Kauko Aromaa. Helsinki 2004.
41. Further Developments in the Prison Systems of Central And Eastern Europe: Achievements, problems and objectives. Roy Walmsley. Helsinki 2003.
40. Crime and Criminal Justice Systems in Europe and North America 1995-1997. Kauko Aromaa, Seppo Leppä, Sami Nevala and Natalia Ollus, editors. Helsinki 2003.
39. Crime Victims: Doing Justice to their Support and Protection. Irwin Waller. Helsinki 2003.
38. Trafficking in Human Beings, Illegal Immigration and Finland. Martti Lehti and Kauko Aromaa. Helsinki 2002.
37. Assessing International Assistance in Law Enforcement: Themes, findings and recommendations from a case-study of the Republic of Estonia. Bill Heberton and Jon Spencer. Helsinki 2001.
36. Women in the Criminal Justice System: International examples & national responses. Proceedings of the workshop held at the Tenth United Nations Congress on the Prevention of Crime and the Treatment of Offenders. Vienna, Austria, 10-17 April 2000. Natalia Ollus and Sami Nevala, editors. Helsinki 2001.
35. 2001 directory computerised criminal justice information systems. Richard Scherpenzeel. The Hague/Helsinki 2000.
34. Five Issues in European Criminal Justice: Corruption, Women in the Criminal Justice System, Criminal Policy Indicators, Community Crime Prevention, and Computer Crime. Proceedings of the VI European Colloquium on Crime and Criminal Policy, Helsinki 10-12 December 1998. Matti Joutsen, editor. Helsinki 1999.
33. Profiles of Criminal Justice Systems in Europe and North America, 1990-1994. Kristiina Kangaspunta, Matti Joutsen, Natalia Ollus and Sami Nevala (eds). Helsinki 1999.
32. Crime and Criminal Justice in Europe and North America, 1990-1994. Kristiina Kangaspunta, Matti Joutsen and Natalia Ollus (eds). Helsinki 1998.
31. Organised Crime Around the World. Sabrina Adamoli, Andrea Di Nicola, Ernesto U. Savona and Paola Zoffi. Helsinki 1998.
30. Computerization in the Management of the Criminal Justice System. Edited by Richard Scherpenzeel, The Hague 1996 (published jointly with the Ministry of Justice of the Netherlands).
29. Prison Systems in Central and Eastern Europe. Roy Walmsley. Helsinki 1996.
- 28A. Strategii preduprezdenija prestupnosti v Evrope i Severnoj Amerike. Dzon Grehem i Trevor Bennett. Helsinki 1996.
28. Crime Prevention Strategies in Europe and North America. By John Graham and Trevor Bennett, London/Helsinki 1995 (published jointly with the Home Office).
27. Directory of Computerized Criminal Justice Information Systems 1995. Richard Scherpenzeel. The Hague/Helsinki 1995.
26. Profiles of Criminal Justice Systems in Europe and North America. Kristiina Kangaspunta (ed.). Helsinki 1995.
25. Crime and Criminal Justice in Europe and North America 1986-1990. Kristiina Kangaspunta (ed.), Helsinki 1995.
24. Foreigners in Prison. Katarina Tomasevski. Tampere 1994.

23. Policing in Central and Eastern Europe. Report on a Study Tour. David Fogel. Helsinki 1994.
22. Criminal Law and the Environment. Edited by Hans-Jörg Albrecht and Seppo Leppä. Forssa 1992.
21. Prison Health, International Standards and National Practices in Europe. Katarina Tomasevski. Helsinki 1992.
20. Computerization of Criminal Justice Information Systems, vol. II. Edited by Richard Scherpenzeel, The Hague 1992 (published jointly with the Ministry of Justice of The Netherlands).
- 19 A. Computarizacion de los Sistemas Informaticos en la Justicia Penal, I volumen. Editado por Richard Scherpenzeel. La Haya 1992.
19. Computerization of Criminal Justice Information Systems, vol. I. Edited by Richard Scherpenzeel, The Hague 1992 (published jointly with the Ministry of Justice of The Netherlands).
18. Crime Prevention Strategies in Europe and North America. John Graham. Helsinki 1990.
17. Criminal Justice Systems in Europe and North America. Edited by Ken Pease and Kristiina Hukkila. Helsinki 1990.
16. Changing Victim Policy: The United Nations Victim Declaration and Recent Developments in Europe. Report of the Ad Hoc Expert Meeting held in Helsinki, 16-17 November 1988. Helsinki 1989.
15. Alternatives to Custodial Sanctions. Proceedings of the European Seminar held in Helsinki, Finland, 26-28 September 1987. Helsinki 1988.
14. Non-Custodial Alternatives in Europe. Norman Bishop. Helsinki 1988 (second printing 1988).
13. HEUNI - The First Five Years. Helsinki 1988.
12. Computerization of Criminal Justice Information Systems: Realities, Methods, Prospects and Effects. Report of the European Seminar held in Popowo, Poland, 18-22 May 1987, Helsinki 1987 (published jointly with the Ministry of Justice of the Polish People's Republic) (second printing 1988).
11. The Role of the Victim of Crime in European Criminal Justice Systems. A Cross-National Study of the Role of the Victim. Matti Joutsen. Helsinki 1987.
10. Papers on Crime Policy 2. Contributions from HEUNI scholars. Helsinki 1986.
9. Non-Prosecution in Europe. Report of the European Seminar held in Helsinki, Finland, 22-24 March 1986, Helsinki 1986.
8. The Legal Scope of Non-Prosecution in Europe. Peter J.P. Tak. Helsinki 1986.
7. Papers on Crime Policy. Károly Bárd, Matti Joutsen and Aleksander Yakovlev. Helsinki 1986.
6. Course on United Nations Criminal Justice Policy. Report of the European course held in Helsinki, Finland, 25-29 March 1985. Helsinki 1985.
5. Criminal Justice Systems in Europe. Report of the Ad Hoc Expert Group on a cross-national study on trends in crime and information sources on criminal justice and crime prevention in Europe. Helsinki 1985.
4. Selected Issues in Criminal Justice. Helsinki 1984.
3. Effective, Rational and Humane Criminal Justice. Report of the European Seminar held in Helsinki, Finland, 31 May - 3 June 1984. Helsinki 1984.
2. Towards a Victim Policy in Europe. Report of the Seminar held in Espoo, Finland, 31 October - 2 November 1983. Helsinki 1984.
1. The Feasibility of a European Information System on Trends in Crime and Criminal Justice Report of the Ad Hoc Meeting of Experts held in Helsinki, Finland, 9-10 May 1983. Helsinki 1983.