

BIROn - Birkbeck Institutional Research Online

Serna-Sánchez, M.A. and PérezEscobar, O.A. and Bogarín, D. and TorresJimenez, M.F. and AlvarezYela, A.C. and ArcilaGalvis, J.E. and Hall, C.F. and de Barros, F. and Pinheiro, F. and Dodsworth, Steven and Chase, M.W. and Antonelli, A. and Arias, T. (2021) Plastid phylogenomics resolves ambiguous relationships within the orchid family and provides a solid timeframe for biogeography and macroevolution. *Scientific Reports* 11 (1), ISSN 2045-2322.

Downloaded from: <https://eprints.bbk.ac.uk/id/eprint/54038/>

Usage Guidelines:

Please refer to usage guidelines at <https://eprints.bbk.ac.uk/policies.html>

or alternatively

contact lib-eprints@bbk.ac.uk.



OPEN

Plastid phylogenomics resolves ambiguous relationships within the orchid family and provides a solid timeframe for biogeography and macroevolution

Maria Alejandra Serna-Sánchez^{1,2,13}, Oscar A. Pérez-Escobar^{3,13}✉, Diego Bogarín^{4,5,13}, María Fernanda Torres-Jimenez⁶, Astrid Catalina Alvarez-Yela⁷, Juliana E. Arcila-Galvis¹, Climbie F. Hall⁸, Fábio de Barros⁸, Fábio Pinheiro⁹, Steven Dodsworth¹⁰, Mark W. Chase³, Alexandre Antonelli^{3,6,11} & Tatiana Arias^{1,7,12}✉

Recent phylogenomic analyses based on the maternally inherited plastid organelle have enlightened evolutionary relationships between the subfamilies of Orchidaceae and most of the tribes. However, uncertainty remains within several subtribes and genera for which phylogenetic relationships have not ever been tested in a phylogenomic context. To address these knowledge-gaps, we here provide the most extensively sampled analysis of the orchid family to date, based on 78 plastid coding genes representing 264 species, 117 genera, 18 tribes and 28 subtribes. Divergence times are also provided as inferred from strict and relaxed molecular clocks and birth–death tree models. Our taxon sampling includes 51 newly sequenced plastid genomes produced by a genome skimming approach. We focus our sampling efforts on previously unplaced clades within tribes Cymbidieae and Epidendreae. Our results confirmed phylogenetic relationships in Orchidaceae as recovered in previous studies, most of which were recovered with maximum support (209 of the 262 tree branches). We provide for the first time a clear phylogenetic placement for Codonorchideae within subfamily Orchidoideae, and Podochilieae and Collabieae within subfamily Epidendroideae. We also identify relationships that have been persistently problematic across multiple studies, regardless of the different details of sampling and genomic datasets used for phylogenetic reconstructions. Our study provides an expanded, robust temporal phylogenomic framework of the Orchidaceae that paves the way for biogeographical and macroevolutionary studies.

¹Laboratorio de Biología Comparativa, Corporación Para Investigaciones Biológicas (CIB), Cra. 72 A No. 78 B 141, Medellín, Colombia. ²Biodiversity, Evolution and Conservation, EAFIT University, Cra. 49, No. 7 sur 50, Medellín, Colombia. ³Royal Botanic Gardens Kew, London TW9 3AE, UK. ⁴Jardín Botánico Lankester, Universidad de Costa Rica, P. O. Box 302-7050, Cartago, Costa Rica. ⁵Endless Forms Group, Naturalis Biodiversity Center, P.O. Box 9517, 2300 RA Leiden, The Netherlands. ⁶Gothenburg Global Biodiversity Centre, Department of Biological and Environmental Sciences, University of Gothenburg, 405 30 Gothenburg, Sweden. ⁷Centro de Bioinformática y Biología Computacional (BIOS), Ecoparque Los Yarumos Edificio BIOS, Manizales, Colombia. ⁸Instituto de Botânica, Núcleo de Pesquisa Orquidário Do Estado, Postal 68041, São Paulo, SP 04045-972, Brasil. ⁹Instituto de Biologia, Departamento de Biologia Vegetal, Universidade Estadual de Campinas, Campinas, SP 13083-862, Brazil. ¹⁰School of Life Sciences, University of Bedfordshire, University Square, Luton LU1 3JU, UK. ¹¹Department of Plant Sciences, University of Oxford, South Parks Road, Oxford OX1 3RB, UK. ¹²Tecnológico de Antioquia, Calle 78B NO. 72A - 220, Medellín, Colombia. ¹³These authors contributed equally: Maria Alejandra Serna-Sánchez, Oscar A. Pérez-Escobar and Diego Bogarín. ✉email: o.perez-escobar@kew.org; tatiana.arias48@tdea.edu.co

Orchidaceae, with *ca.* 25,000 species and ~ 800 genera^{1,2} are one of two of the most diverse and widely distributed flowering plant families on Earth and have captivated the attention of scientists for centuries³. The family has a striking morphological and ecological diversity and evolved complicated interactions with fungi, animals and other plants^{4,5} and a diverse array of sexual systems^{6–8}. Numerous efforts have been made to understand the natural history, evolution and phylogenetic relationships within the family^{2,7,9–13}. To date, there are seven nuclear genome sequences available, i.e., *Apostasia shenzhenica*¹⁴, *Dendrobium catenatum*¹⁵, *D. officinale*¹⁶, *Gastrodia elata*¹⁷, *Phalaenopsis equestris*¹⁸, a *Phalaenopsis* hybrid cultivar¹⁹, *P. aphrodite*²⁰, *Vanilla planifolia*²¹, 221 complete plastid genomes and 2,678 sequence read archives for Orchidaceae in NCBI (accessed 22 August 2020).

Phylogenomic approaches have been implemented to infer relationships between major orchid clades in deep and recent time^{2,10,12,13,22,23}, but extensive uncertainties remain regarding the phylogenetic placement of several subtribes²⁴. This knowledge-gap stems from a dearth of both taxonomic and genomic sampling efforts that would be required to comprehensively cover all major orchid clades (subtribes/groups of genera). Givnish et al.² published the first well-supported analysis of Orchidaceae based on plastid phylogenomics. They performed a maximum likelihood (ML) analysis of 75 genes from the plastid genome of 39 orchid species, covering 22 subtribes, 18 tribes and five subfamilies. This robust but taxonomically under-sampled study corroborated relationships of the subfamilies and tribes, observed in previous studies^{10–13}.

Previous orchid studies have failed to resolve relationships in rapidly diversifying clades^{24–27} because of reduced taxon and data sampling²⁸. This is particularly true for Cymbidieae and Pleurothallidinae, the two most species-rich groups in which generic relationships are largely the product of rapid diversification²⁹ that is difficult to resolve using only a few loci^{26,30}. Cymbidieae comprise 10 subtribes, ~ 145 genera and nearly 3800 species¹, 90% of which occur in the Neotropics²⁹. Four of these subtribes are among the most species-rich in the Andean and Chococoan region (Maxillariinae, Oncidiinae, Stanhopeinae and Zygopetalinae³¹). Pleurothallidinae include ~ 5500 exclusively Neotropical species in 47 genera. Pleurothallid orchids are one of the most prominent components of the cloud forest flora in the northern and central Andes and Central America³², also being very well represented in the humid forests of eastern Brazil.

Another group in which phylogenetic relationships are unresolved is Orchidoideae^{1,33}. This group comprises four mostly terrestrial tribes, 25 subtribes and over 3,600 species. The subfamily occurs on all continents except the Antarctic. Previous efforts to disentangle the phylogenetic relationships in the subfamily have mostly relied on a small set of nuclear and plastid markers³⁴, and more recently on extensive plastid coding sequence data².

The wide geographical range of these groups in the tropics and temperate regions and their striking vegetative and reproductive morphological variability make them ideal model clades for disentangling the contribution of abiotic and biotic drivers of orchid diversification across biomes. Occurring from alpine ecosystems to grasslands, they have conquered virtually all ecosystems available in any elevational gradient^{35–37}, showing independent transitions to terrestrial, rupicolous and epiphytic habit. Moreover, they have evolved a diverse array of pollination systems^{38–40}, rewarding species offering scent, oil and nectar, and even food- and sexual deceptive species^{41,42}. However, the absence of a solid phylogenetic framework has precluded the study of how such systems evolved and the diversification dynamics of Cymbidieae, Pleurothallidinae and Orchidoideae more broadly.

Phylogenetic analyses are crucial to understanding the drivers of diversification in orchids, including the mode and tempo of morphological evolution⁴³. High-throughput sequencing and modern comparative methods have enabled the production of massive molecular datasets to reconstruct evolutionary histories and thus provide unrivalled knowledge on plant phylogenetics⁴⁴. Here, we present the most densely sampled plastid analysis of Orchidaceae, including data from 51 newly sequenced plastid genomes. We apply two general approaches: (a) maximum likelihood phylogenetic analysis conducted on 78 plastid coding regions to inform relationships; (b) Bayesian inference in combination with strict and relaxed molecular clocks and a birth–death model applied to a subset of the plastid coding regions to produce a temporal framework of the orchid family. Our study expands the current generic representation for the Orchidaceae and clarifies previously unresolved phylogenetic relationships within the Cymbidieae, Pleurothallidinae and Orchidoideae. The results reported here provide a robust framework for the orchid family and new insights into relationships at both deep and shallow phylogenetic levels.

Results

Phylogenetic relationships and divergence times in the orchid family. The maximum likelihood (ML) tree derived from the 78 plastid genes is provided in Fig. 1. Two hundred-and-thirty-one branches were recovered as strongly supported (i.e. likelihood bootstrap percentage [LBP] = 85–100), of which 209 attained maximum support. Only 26 branches recovered LBPs between 25 and 84 (Fig. 1, inset). Unsupported relationships were restricted to Epidendroideae and Orchidoideae but were more frequent in Epidendroideae and often linked to low levels of sequence variation. Here, poorly supported relationships occurred mostly towards the backbone of the tribes Arethuseae, Cymbidieae, Epidendreae and Neottieae and Tropidieae + Nervilieae and the most recent common ancestor (MRCA) of Arethuseae, Malaxideae, Podochilieae, Collabieae, Epidendreae, Vandaeae and Cymbidieae. Intrageneric relationships were robustly supported, with only two instances for which few branches were recovered as poorly supported (*Dendrobium*: 3; *Cymbidium*: 1; Fig. S1).

Absolute times of divergence under strict and relaxed clocks for Orchidaceae, subfamilies and most tribes are provided in Table 1 (phylogenetic trees with mean ages and intervals of confidence produced under both clock models are provided on Figs. S2, S3). Strict and relaxed molecular clocks revealed similar ages of divergence for the majority of the MRCAs of main orchid clades. Yet, we found stark differences in the length of the 95% highest posterior density intervals (HPD) derived from both models, with the relaxed clock producing larger HPDs (Tables 1, S1, S2; Figs. S2, S3). Under the strict and relaxed clocks, Orchidaceae diversified first during the late Cretaceous (88.1 my ± 3; 89.1 my ± 9, respectively). The largest differences on the MRCA ages occurred in Epidendroideae (44 my ± 2 vs 60 my ± 10 under a strict and relaxed clock models, respectively) and Vanilloideae

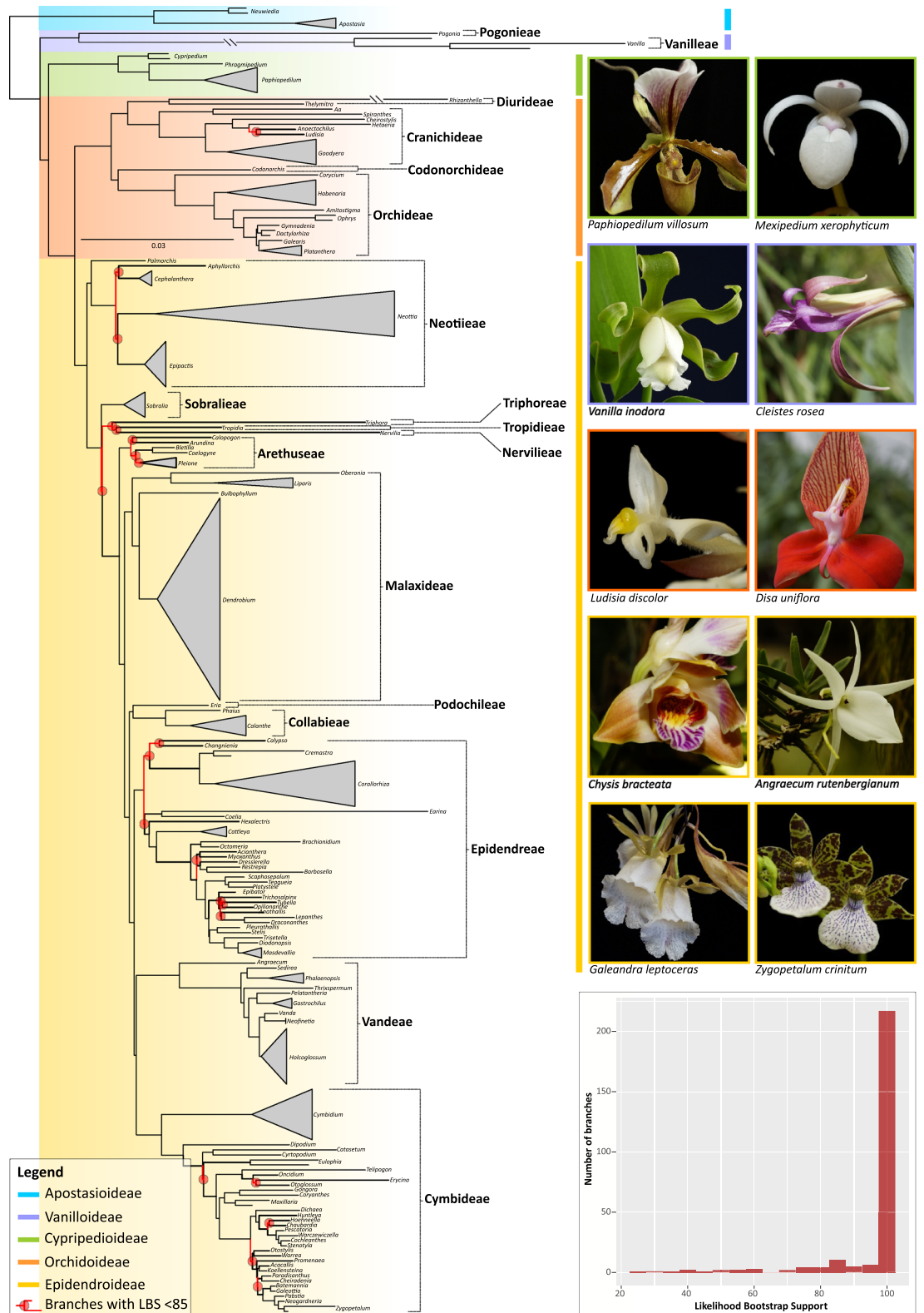


Figure 1. Maximum Likelihood phylogeny of the orchid family inferred from 78 coding plastid genes. Likelihood bootstrap support values (LBS) < 85% at nodes are highlighted in red together with their corresponding subtending branches. Orchid genera, tribes and subfamilies are indicated in the phylogeny together with photographs of selected representative species per subfamily. (Inset): Bar plot showing the frequency of LBS values at branches as computed by bin intervals of 5 units. Photos: O. Pérez-Escobar & D. Bogarín.

MRCA	Strict clock						Relaxed clock					
	Stem branch length	Mean age	Age (95% HPD lower bound)	Age (95% HPD upper bound)	95% HDP length	Age (median)	Stem branch length	Mean age	Age (95% HPD lower bound)	Age (95% HPD upper bound)	95% HDP length	Age (median)
270—Orchidoideae	35.35	88.15	84.78	91.71	6.93	88.15	23.90	89.81	80.99	95.91	14.92	88.15
271—Apostasioideae	48.38	39.77	37.71	41.88	4.17	39.75	53.39	36.42	8.59	62.25	53.65	36.15
276—Vanilloideae	3.95	80.96	77.63	84.29	6.66	80.95	12.65	67.69	52.73	80.94	28.20	68.29
280—Cypripedioideae	38.52	31.54	29.70	33.23	3.52	31.53	38.39	38.48	21.66	55.84	34.18	37.59
289—Orchidoideae	5.43	57.76	55.38	60.33	4.96	57.75	8.42	60.02	48.91	70.72	21.80	60.05
291—Diuroidae	1.42	54.36	51.85	56.86	5.01	54.35	12.37	40.85	29.52	52.02	22.51	40.65
292—Cranichideae	9.76	46.02	43.86	48.08	4.22	46.02	11.63	41.59	29.62	53.64	24.02	41.42
304—Orchideae	15.30	38.48	36.35	40.61	4.25	38.46	13.19	41.11	29.85	52.68	22.84	41.00
320—Epidendroideae	18.67	44.52	42.54	46.58	4.05	44.50	8.22	60.23	48.38	71.60	23.22	60.27
321—Neottieae	8.89	35.63	33.79	37.55	3.76	35.62	3.97	56.26	43.08	69.24	26.17	56.47
347—Sobralieae	33.06	7.67	6.99	8.38	1.39	7.66	41.83	11.51	5.72	19.00	13.28	10.93
356—Aretuseae	16.85	19.77	18.46	21.03	2.56	19.77	23.58	22.53	12.55	34.78	22.23	21.66
363—Malaxideae	2.22	33.74	32.24	35.24	3.00	33.74	7.85	36.99	27.49	46.87	19.39	36.74
410—Collabieae	14.60	17.32	16.00	18.57	2.57	17.32	13.47	22.47	10.72	35.05	24.33	22.08
416—Epidendroideae	2.56	32.18	30.81	33.63	2.82	32.17	5.21	35.48	28.12	42.53	14.41	35.41
460—Vandeae	8.91	25.60	24.13	27.05	2.92	25.59	9.31	30.77	22.20	39.32	17.12	30.76
484—Cymbidieae	2.94	31.57	30.18	32.97	2.79	31.57	4.67	35.42	28.23	42.89	14.65	35.32

Table 1. Absolute age estimations of main orchid lineages under strict and relaxed clock models.

(80 my \pm 4 vs 67 my \pm 9). A complete account of mean and median ages, HPDs, branch lengths and rate values estimated for chronograms derived from strict and relaxed molecular clock models are provided on Tables S1, S2.

Phylogenetic informativeness of plastid genes. Phylogenetic informativeness plots are provided on Fig. S4 (see Tables S3, S4 for a detailed account of PI per-site and net values for each assessed locus). Per-site and net phylogenetic informativeness (PI) analyses recovered both *ycf1* as the most informative locus, which attained the highest values at a reference time (phylogenetic depth) of 0.51. On average, plastid loci attained their highest PI value at a reference time of 0.85 (SD = 0.16). In contrast, the highest PI values of the 10 most informative loci occurred at an average reference time of 0.63 (SD = 0.11) and 0.80 (SD = 0.17) for per-site and net PI calculations.

Discussion

A robust temporal phylogenomic framework for the orchid family. Previous phylogenomic studies of the orchid family included up to 74 species representing 18 tribes, 19 subtribes and 66 genera²⁸. Our study sampled 264 species from all subfamilies, representing 18 tribes (out of 22), 28 subtribes (out of 46) and 74 genera (~10% of the currently recognised genera; Fig. 2). In general, our phylogenomic frameworks are in agreement with previously published family-wide orchid analyses either inferred from dozens of markers^{2,13} or from a handful of loci³⁰. Here, representativeness of Cymbidieae and Epidendreae, two of the most prominent tropical Epidendroideae⁴⁵ clades, have increased from eight to 32 genera and six to 30, respectively^{2,28}. In particular, relationships inferred from extensive plastid data within Zygopetaliinae (Cymbidieae) and Pleurothallidinae (Epidendreae) are presented for the first time. Our 78-coding sequence plastid ML analysis led to similar results as reported by Givnish et al.², Niu et al.¹³ and Li et al.²⁸ but with an overall clear increase in support: 22% of branches with LBS < 85 in Givnish et al.² and 21% in Li et al.²⁸ vs 11.5% in this study. This is particularly evident in relationships inferred within Orchidoideae, Cymbidieae, Epidendreae and Collabieae. For the latter, high support for the previously unresolved relationship of Podochilieae + Collabieae^{2,28} was attained for the first time.

The absolute age estimates derived from our strict and relaxed molecular clocks and five of the most informative plastid loci are in line with previous nuclear-plastid multi-locus and phylogenomic plastid-only

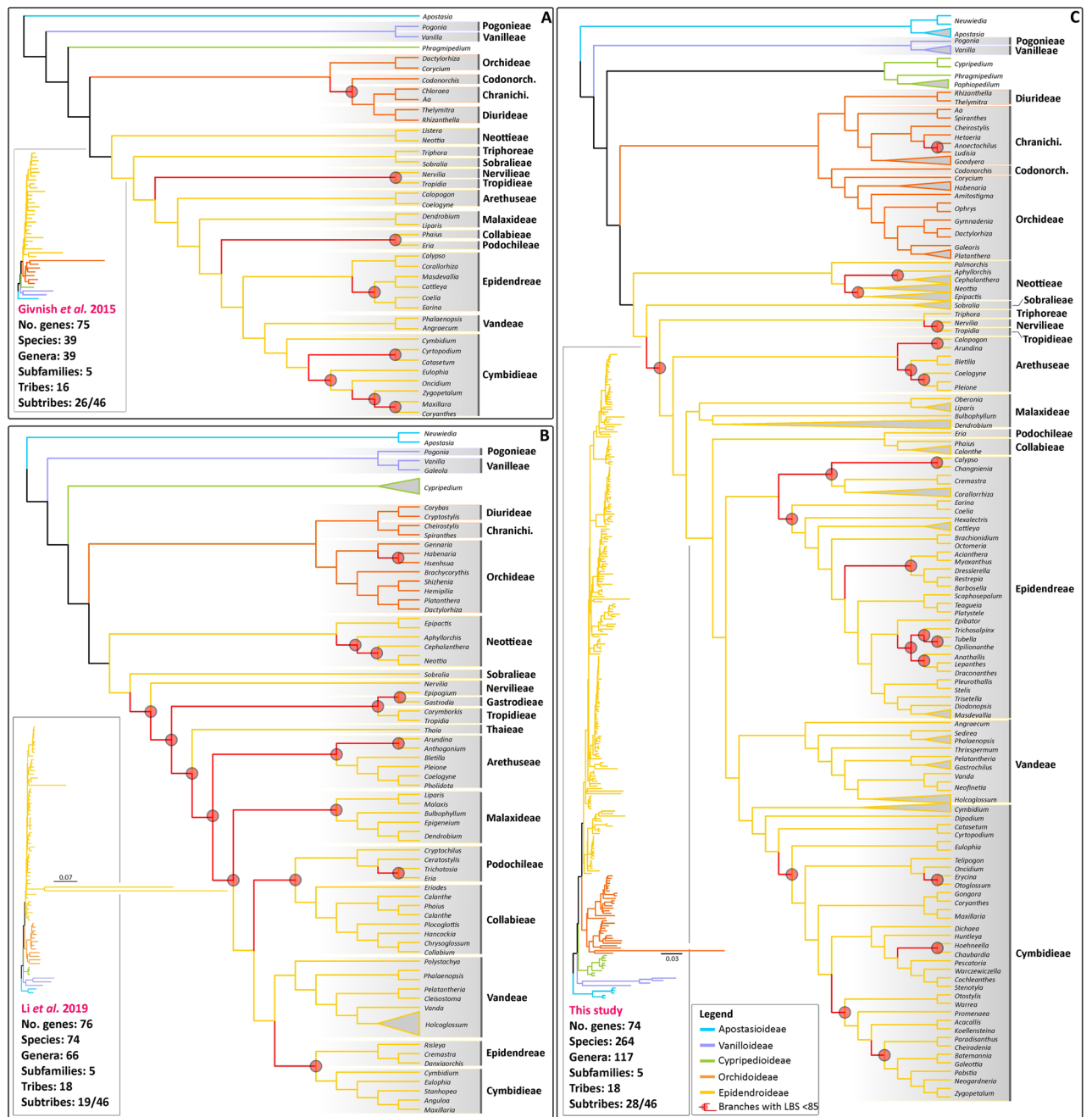


Figure 2. A comparison of the main plastid topologies of the orchid family published to date. (A) Givnish et al.² inference based on 75 plastid genes and 39 orchid species; (B) Li et al.²⁸ inference based on 76 plastid genes and 76 orchid species; (C) This study: 78 plastid and 264 orchid species. LBP at nodes are highlighted in red together with their corresponding subtending branches. (Inset): trees with branch lengths proportional to substitutions/site.

chronograms^{2,46,47}. Nonetheless, our ML tree also identifies intricate relationships that have been consistently recovered as unsupported in several studies. These include poorly supported basal branches in Epidendroideae representing Sobralieae, Nervilieae and Tiphoreae^{28,48}, *Arundina* + remainder of Arethuseae²⁸, and the position of Eulophiinae in the Cymbidieae^{26,29,49} (Fig. 2). Uncertainty around the phylogenetic position of these clades might be due to limited taxon sampling in this and previous studies. Alternatively, intragenomic conflict^{50–52} and lack of phylogenetic informativeness required to sort out relationships derived from rapid diversifications^{22,53,54} in plastid DNA sequences (regardless of whether whole plastid genome datasets are employed⁵⁵) might hamper the phylogenetic placement of clades with robust support.

Improved support of phylogenetic relationships within Cymbidieae. Multiple studies have inferred evolutionary relationships in Cymbidieae from morphological and molecular characters^{29,30}. Relation-

ships among subtribes have recently been estimated using the plastid genes *psaB*, *rbcl*, *matK* and *ycf1* combined with the low-copy nuclear gene *Xdh*²⁶. Here, Cymbidiinae was sister to the remainder of Cymbidieae. Poorly supported and incongruent relationships were found among Catasetinae, Eulophiinae and Eriopsidinae, however, when compared with the topologies obtained by Whitten et al.³⁰, Freudenstein & Chase⁴⁸ and Pérez-Escobar et al.⁷.

The most complete taxonomic sampling conducted to date under a plastid phylogenomic framework² included 8 of 11 subtribes of Cymbidieae, but some inter-subtribal relationships were unresolved: Stanhopeinae (20 genera), Maxillariinae (12 genera), Zygopetalinae (36 genera), Oncidiinae (65 genera) and Eulophiinae (13 genera). A clade formed by Stanhopeinae and Maxillariinae had poor support (LBP = 62) and their relationship to Zygopetalinae also had low support (LBP = 72). The relationship between Eulophiinae and a clade of Stanhopeinae, Maxillariinae, Zygopetalinae and Oncidiinae also had poor support (LBP = 42). One of the outcomes of our expanded sampling (nine subtribes) is the improvement of support in Cymbidieae, more specifically for branches of some groups involved in rapid diversifications that historically have been problematic to resolve^{2,30}. In particular, Maxillariinae + Stanhopeinae and Catasetinae + Cyrtopodiinae are now both strongly supported (LBP = 100). In addition, our results also support the placement of *Dipodium* (Dipodiinae) as sister to the rest of Cymbidieae, a relationship which was previously recovered from a few loci²⁶. However, our plastid phylogenomic framework is still incomplete due to absence of representatives of Eriopsidinae and Coleopsidinae.

One other novelty of our study is the inference of relationships in Zygopetalinae, a subtribe in which relationships have previously been poorly understood⁵⁶. The most extensively sampled analysis of Zygopetalinae inferred from plastid markers (*matK-ycf1*)³⁰ included 60 species and 27 genera, but relationships between most genera attained only low support. Our expanded molecular, but taxonomically reduced, matrix (i.e. 20 genera and 21 species) produced greater support for the backbone relationships in the subtribe, including the radiation of the *Huntleya* clade (*Dichaea*, *Huntleya*, *Chaubardia* and the *Chondrorhyncha* complex^{56,57}). Nonetheless, relationships between the *Huntleya* grade (i.e. *Huntleya* clade + *Cryptarrhena*) and the remainder of Zygopetalinae still remains unresolved.

Our phylogenetic analyses further place for the first time in the orchid tree of life *Cheiradenia* and *Hoehneella* with moderate to strong support (Figs. 1, S1). *Cheiradenia* is a monospecific genus restricted to the lowland wet forests of Venezuela and Guyana and northern Brazil, whereas *Hoehneella* includes two species exclusively distributed in the Brazilian evergreen wet forests of the states of Espírito Santo and São Paulo⁵⁸. Referring to the similarity of both vegetative and floral reproductive characters, Pupulin⁵⁸ hypothesised that *Cheiradenia* should be closely related to members of the *Zygopetalum* clade (e.g. *Koellensteina*, *Paradisanthus*), with *Hoehneella* being related to the *Huntleya* clade (i.e. *Huntleya* and *Chaubardia*). Our ML tree supports both assumptions, placing *Cheiradenia* as sister to *Paradisanthus* with maximum support and *Hoehneella* as sister to *Chaubardia* in a moderately supported clade (83 LBP; Figs. 1, S1). *Koellensteina kellneriana* (the taxonomic type of the genus) clustered with *Acacallis* and not with *Otostylis* and *Paradisanthus*, and therefore we confirm that *Koellensteina* in the strict sense is related to *Acacallis*. In addition, *Otostylis* is recovered as sister to *Warrea* and not to *Paradisanthus* as previously suggested by Williams et al.⁵⁶ based on a weakly supported placement. Our results also highlight the extensive and independent terrestrial and epiphytic habit transitions occurring in this clade, as most sister genera show different habit types.

Novel and robust relationships in the most rapidly diversifying subtribe Pleurothallidinae. One of the most spectacular Neotropical plant diversifications is perhaps that of the Pleurothallidinae, for it involves the evolution of ~ 5000 species that have conquered virtually all biogeographical regions in the American tropics^{32,45}. The rapid radiation of Pleurothallidinae occurring in the last ~ 20 Myrs²⁹ is associated with the evolution of a diverse suite of pollination systems ranging from food deception⁵⁹ to pseudocopulation⁶⁰ linked to dipterans^{61,62} and a complex array of reproductive and vegetative morphologies^{22,32}. Understanding of relationships in the subtribe has relied mostly on relatively small number of markers^{63–65}, which have informed with some confidence the phylogenetic placement and monophyly of genera in Pleurothallidinae, yet basal branches in these trees have often lacked good support.

Several attempts have been conducted to estimate generic relationships in the subtribe, most of which have relied on nuclear rITS and plastid *matK* markers⁶⁴. A synthesis of the phylogenetic relationships in the subtribe based on such studies was conducted by Karremans⁶⁶. Here, a cladogram depicting the commonest topologies of relationships between genera was provided and nine clades were defined (termed “affinities” by the author) but without considering the magnitude of the support for these (see Fig. 2 in Karremans⁶⁶). Our plastid phylogenomic analysis recovered well-supported relationships in Pleurothallidinae that are mostly in line with previously published studies^{29,63}. However, these previous trees based on a handful of DNA nuclear and plastid markers yielded poor resolution and low support for backbone branches as well as infrageneric relationships. In contrast, our plastid phylogenomic inferences recovered high support along the backbone, thus recovering novel placements. Some of these noteworthy well-supported relationships are the position of *Acianthera* as sister to *Myoxanthus* and *Dresslerella* as sister to *Barbosella* + *Restrepia* (Figs. 1, S1).

Acianthera includes over 300 species distributed throughout the American tropics and subtropics^{64,67,68}, is often retrieved as sister to the remainder of Pleurothallidinae with moderate support⁶³. Karremans⁶⁶ used a series of “affinities” to describe groups of genera affiliated with a core genus and thus described the “*Acianthera* affinity” as the frequent clustering of several genera allied with *Acianthera*⁶⁴. Our study contradicts Karremans⁶⁶ concept of the *Acianthera* affinity by placing with high support *Acianthera* in the *Restrepia* affinity as sister to *Myoxanthus*. *Dresslerella* was previously recovered with low support as sister to the remaining genera in the *Restrepia* affinity (*Barbosella*, *Echinosepala*, *Myoxanthus*, *Restrepia*, *Restrepiella* and *Restrepiopsis*). In contrast,

our analysis robustly places *Dreslerella* as sister to *Restrepia* and *Barbosella*, a result that does not support the monophyly of the *Restrepia* affinity.

Although estimates of the ancestral distribution of the Pleurothallidinae are still uncertain, most of the early divergent Pleurothallidinae and their sister groups are found in the Antilles or Brazil²⁹. The remarkable relationship recovered here for *Acianthera* + *Myoxanthus* could yield more clues about the biogeographic history and evolution of the subtribe because Brazil harbours a high species diversity of *Acianthera* and some of the early divergent clades in *Myoxanthus* (particularly the species close to *M. lonchophyllus*), whereas *Myoxanthus* is notably absent in the Antilles. In addition, other early divergent clades such as *Octomeria* and *Barbosella* are more diverse in Brazil. These clades share the lack of stem annulus as a morphological symplesiomorphy, a character that later appears in more diverse groups such as *Masdevallia* + *Dracula*, *Lepanthes*, and *Pleurothallis* + *Stelis*⁶⁹. Members of these clades probably diversified after a migration to the mountainous areas of the northern Andes ca 16 ± 5 Ma and together account for almost 80% of the species in the subtribe²⁹. The modern range extends mostly along the Andean and Central American mountain ranges. Here, another noteworthy relationship is that the less diverse *Specklinia* clade (*Scaphosepalum* + *Platystele*) was recovered as sister to the most species-rich clades of the subtribe (*Masdevallia*, *Lepanthes*, and *Pleurothallis*). In previous phylogenetic analyses *Specklinia* clade was recovered as sister to *Pleurothallis*²⁹.

Likewise, relationships between early divergent members in the *Lepanthes* affinity (*Anathallis*, *Draconanthes*, *Epibator*, *Lepanthes*, *Opilionanthe*, *Trichosalpinx* and *Tubella*) were largely weakly supported, demonstrating the need for increased taxon sampling, principally in *Lepanthopsis* and *Tubella*³². In particular, the early diversification of the *Lepanthes* affinity (> 1500 spp.), inferred to have occurred around 8 Ma, has been linked to colonisation of newly formed environments in the Andean Cordillera, accelerated mountain uplift and the evolution of specific pollination systems (pseudocopulation and food mimicry⁶⁰).

Another novel placement concerns *Teagueia* (diverse in Colombia, Ecuador and Peru^{70–72}), which resembles *Platystele*⁷³. Karremans⁷⁴ had suggested a close relationship between *Teagueia* and *Scaphosepalum*, but our results place *Teagueia* as sister to *Platystele* with high support, thus corroborating the long-standing hypotheses of their sister relationship based on the similarity of their reproductive structures^{72,73}.

Evolutionary relationships in Orchidoideae. Our study provides a well-supported tree for Orchidoideae. Our ML inference supports the findings of Pridgeon et al.³⁵ in which Diurideae is sister to Cranichideae and Codonorchideae to Orchidoideae. Our findings differ from Givnish et al.² and Salazar et al.³⁴, in which Diurideae/Cranichideae are sister to Codonorchideae, with Orchidoideae sister to all these (Fig. 2). Givnish et al.² included all four tribes but only six of 21 subtribes of Orchidoideae, and the relationship of Diurideae to Cranichideae was poorly supported.

Conclusions

This study presents a well-resolved, more densely sampled and strongly supported analysis of Orchidoideae and their absolute times of divergence than all previous similar studies. For deep branches and recent diversifications in Cymbidieae and Epidendreae, support is improved, yet several recalcitrant branches that historically have been challenging to resolve were also recovered as poorly supported (e.g. early divergent taxa in the Epidendroideae, initial radiation of the *Lepanthes* affinity in Pleurothallidinae). Similarly, our analyses provide a well-supported result for Orchidoideae. Although taxon sampling was sufficient to resolve the relationships between the major clades in the family, sampling of unrepresented genera and representatives of Eriopsidiinae, Goodyerinae, and Coleopsidiinae would further enhance our understanding of phylogenetic relationships.

Material and methods

Sampling, DNA extraction and sequencing. Two-hundred and sixty-four species representing 117 genera, 28 subtribes and 18 tribes were sampled in this study. For 51 species plastid genomes were sequenced. Table S5 provides voucher information and accession numbers of plastid genomes sourced from NCBI. Fresh leaves were stored in silica gel for subsequent DNA extraction using a CTAB method⁷⁵. Total DNA was purified with silica columns and then eluted in Tris-EDTA⁷⁶. DNA samples were adjusted to 50 ng/μL and sheared to fragments of approximately 500 bp.

High-throughput sequencing. The library preparation, barcoding and sequencing (Illumina HiSeqX) were conducted at Rapid Genomics LLC (Gainesville, FL, USA), BGI Genomics (Shenzhen, China) and Genewiz GmbH (Leipzig, Germany). Pair-end reads of 150 bp were obtained for fragments with insert size of 300–600 bp. Overhangs were blunt ended using T4 DNA polymerase, Klenow fragment and T4 polynucleotide kinase. Subsequently, a base 'A' was added to the 3' end of the phosphorylated blunt DNA fragments. DNA fragments were ligated to adapters, which have a thymine (T) overhang. Ligation products were gel-purified by electrophoresis to remove all unbound adapters or split adapters that were ligated together. Ligation products were then selectively enriched and amplified by PCR. For each sample, between one and 10 million paired-end reads were generated.

Plastid genome assembly and annotation. Raw sequences were quality filtered using Trimmomatic⁷⁷ in order to eliminate sequencing artefacts, improve uniformity in the read length (> 40 bp) and ensure quality (Phred score > 20) for further analysis. Filtered sequences were processed with BBNorm⁷⁸ to normalize coverage by down-sampling reads over high-depth areas of the genomes (maximum depth coverage 900× and minimum depth 6×). This step creates a flat coverage distribution in order to improve read assembly. Subsequently, overlapping reads were merged into single reads using BBmerge⁷⁹ in order to accelerate the assembly process. Overlap-

ping of paired reads was evaluated with Flash⁸⁰ to reduce redundancy. Merged reads were used to carry out the whole genome de novo assembly with SPAdes (hash length 3,355,77)⁸¹.

To produce contiguous, linear plastid genome sequences we relied on a reference-based and *de-novo* approaches. The reference based approach was conducted on MIRA v. 4⁸², a software that maps read data against a consensus sequence of a reference assembly (simple mapping). MIRA has been useful for assembling complicated genomes with many repetitive sequences^{83–85}. MIRA produces BAM files as output, which were subsequently used to generate consensus sequences in SAMTOOLS⁸⁶. We sourced 11 reference plastomes from the NCBI repository that represent related species, namely: *Cattleya crispata*, *Goodyera fumata*, *Masdevallia picturata*, *M. coccinea*, *Oncidium sphacelatum* and *Sobralia callosa*. The *de-novo* assembly approach relied on GetOrganelle⁸⁷, using the recommended default settings for assemblies of green-plant plastid genomes.

Newly sequenced and datamined plastid genomes were annotated through the Chlorobox portal of the Max Planck Institute⁸⁸. Sequences were uploaded as fasta files, and running parameters were established as follow: BLAST protein search identity = 65%, BLAST rRNA, tRNA, DNA search identity = 85%, genetic code = bacterial/plant plastid, max intron length = 3,000, options = allow overlaps. *Apostasia wallichii*, *Masdevallia picturata*, *Oncidium sphacelatum*, *Sobralia callosa* and *Goodyera fumata* were set as the 'Server Reference' and *Cattleya liliputana* was set as the 'Custom Reference' for CDS and tRNA, rRNA, primer, other DNA or RNA specifications.

Phylogenetic analysis. A set of 78 plastid genes was used to reconstruct phylogenetic relationships in Orchidaceae. These were aligned⁸⁹ using MAFFT⁹⁰ and subsequently concatenated (proportions of missing data per species is provided on Table S5). This step was performed at the supercomputing centre APOLO, EAFIT University, Medellín, Colombia. Phylogenetic reconstruction based on maximum likelihood (ML) was implemented in RAxML v. 8.0⁹¹, using 1,000 bootstrap replicates and the GTR + GAMMA model. Absolute age estimation analyses relied on fossil and secondary calibration points, strict and molecular clocks and a birth/death model implemented in BEAST v. 1.8⁹². The fossil constraint was added to the MRCA of *Dendrobium* following Xiang et al.⁹³ using a normal distribution with mean value of 21.07 and a standard deviation (SD) of 3.0. Following Givnish et al.², the two secondary calibration points were added to the root of the tree and MRCA of the Orchidaceae, using a normal distribution and mean values of 123.48 (SD = 2.0) and 90 (SD = 2.0). Because dating analyses conducted on dozens of gene alignments and hundreds of terminals are extremely computationally greedy, we estimated absolute ages on the five most phylogenetically informative genes (see below) and by constraining the tree topology to the ML tree derived from RAxML. For each clock model, we conducted two MCMC analyses with 250 million generations each with a sampling frequency of 10,000 generations. The convergence of the strict and relaxed molecular clocks parameters was confirmed on the software TRACER v1.6 (<http://tree.bio.ed.ac.uk/software/tracer/>). Maximum clade credibility trees were summarised from the MCMC trees in the program TreeAnnotator v.1.8. of the software BEAST. The individual gene alignments employed for ML and Bayesian phylogenetic inferences are freely available at <https://doi.org/10.6084/m9.figshare.14068892>

Phylogenetic informativeness profiles. To estimate the phylogenetic informativeness (PI) of plastid genes we calculated the per-site and net values for each assessed locus with the HyPhy substitution rates algorithm for DNA sequences⁹⁴ using in the web application PhyDesign <http://phydesign.townsend.yale.edu/>). The input files were the consensus ML ultrametric tree converted with the function *chronos* of the R-package APE (<http://ape-package.ird.fr/>) using an smoothing rate of 1 and a relaxed clock model, and the partitioned concatenated gene alignments.

Received: 18 September 2019; Accepted: 30 December 2020

Published online: 25 March 2021

References

- Chase, M. W. *et al.* An updated classification of orchidaceae: updated classification of orchidaceae. *Bot. J. Linn. Soc.* **177**, 151–174 (2015).
- Givnish, T. J. *et al.* Orchid phylogenomics and multiple drivers of their extraordinary diversification. *Proc. R. Soc. B Biol. Sci.* **282**, 1553 (2015).
- Darwin, Ch. *On the Various Contrivances by which British and Foreign Orchids are Fertilised by Insects, and on the Good Effects of Intercrossing, 1st Issue* 1st edn. (John Murray, London, 1862).
- Fay, M. F. & Chase, M. W. Orchid biology: from Linnaeus via Darwin to the 21st century. *Ann. Bot.* **104**, 359–364 (2009).
- Ramírez, S. R. *et al.* Asynchronous diversification in a specialized plant-pollinator mutualism. *Science* **333**, 1742–1746 (2011).
- Borba, E. L., Barbosa, A. R., de Melo, M. C., Gontijo, S. L. & de Oliveira, H. O. Mating systems in the Pleurothallidinae (Orchidaceae): evolutionary and systematic implications. *Lankesteriana* **11**, 207–211 (2011).
- Pérez-Escobar, O. A. *et al.* Multiple geographical origins of environmental sex determination enhanced the diversification of Darwin's favourite orchids. *Sci. Rep.* **7**, 12878 (2017).
- Pérez-Escobar, O. A., Gottschling, M., Whitten, W. M., Salazar, G. & Gerlach, G. Sex and the Catasetinae (Darwin's favourite orchids). *Mol. Phylogenet. Evol.* **97**, 1–10 (2016).
- Bateman, R. & Rudall, P. Evolutionary and morphometric implications of morphological variation among flowers within an inflorescence: a case-study using European orchids. *Ann. Bot.* **98**, 975–993 (2006).
- Dong, W.-L. *et al.* Molecular evolution of chloroplast genomes of orchid species: insights into phylogenetic relationship and adaptive evolution. *Int. J. Mol. Sci.* **19**, 716 (2018).
- Freudenstein, J. V. & Chase, M. W. Phylogenetic relationships in Epidendroideae (Orchidaceae), one of the great flowering plant radiations: progressive specialization and diversification. *Ann. Bot.* **115**, 665–681 (2015).
- Luo, J. *et al.* Comparative chloroplast genomes of photosynthetic orchids: insights into evolution of the Orchidaceae and development of molecular markers for phylogenetic applications. *PLoS ONE* **9**, e99016 (2014).

13. Niu, Z. *et al.* The complete plastome sequences of four orchid species: insights into the evolution of the orchidaceae and the utility of plastomic mutational hotspots. *Front. Plant Sci.* **8**, 715 (2017).
14. Zhang, G.-Q. *et al.* The *Apostasia* genome and the evolution of orchids. *Nature* **549**, 379–383 (2017).
15. Zhang, G.-Q. *et al.* The *Dendrobium catenatum* Lindl. genome sequence provides insights into polysaccharide synthase, floral development and adaptive evolution. *Sci. Rep.* **6**, 19029 (2016).
16. Yan, L. *et al.* The Genome of *Dendrobium officinale* illuminates the biology of the important traditional chinese orchid herb. *Mol. Plant* **8**, 922–934 (2015).
17. Yuan, Y. *et al.* The *Gastrodia elata* genome provides insights into plant adaptation to heterotrophy. *Nat. Commun.* **9**, 1615 (2018).
18. Cai, J. *et al.* The genome sequence of the orchid *Phalaenopsis equestris*. *Nat. Genet.* **47**, 65–72 (2014).
19. Huang, J.-Z. *et al.* The genome and transcriptome of *Phalaenopsis* yield insights into floral organ development and flowering regulation. *PeerJ* **4**, e2017 (2016).
20. Chao, Y.-T. *et al.* Chromosome-level assembly, genetic and physical mapping of *Phalaenopsis aphrodite* genome provides new insights into species adaptation and resources for orchid breeding. *Plant Biotechnol. J.* **16**, 2027–2041 (2018).
21. Hu, Y. *et al.* Genomics-based diversity analysis of Vanilla species using a *Vanilla planifolia* draft genome and Genotyping-By-Sequencing. *Sci. Rep.* **9**, 3416 (2019).
22. Bogarín, D. *et al.* Anchored Hybrid Enrichment generated nuclear, plastid and mitochondrial markers resolve the *Lepanthes horrida* (Orchidaceae: Pleurothallidinae) species complex. *Mol. Phylogenet. Evol.* **129**, 27–47 (2018).
23. Pérez-Escobar, O. A. *et al.* Resolving relationships in an exceedingly young Neotropical orchid lineage using Genotyping-by-sequencing data. *Mol. Phylogenet. Evol.* **144**, 106672 (2020).
24. Grace, O. M. *et al.* Botanical monography in the Anthropocene. *Trends Plant Sci.* <https://doi.org/10.1016/j.tplants.2020.12.018> (2021).
25. Jin, W.-T. *et al.* Phylogenetics of subtribe Orchidinae s.l. (Orchidaceae; Orchidoideae) based on seven markers (plastid *matK*, *psaB*, *rbcL*, *trnL-F*, *trnH-psbA*, and nuclear nrITS, *Xdh*): implications for generic delimitation. *BMC Plant Biol.* **17**, 222 (2017).
26. Li, M.-H., Zhang, G.-Q., Liu, Z.-J. & Lan, S.-R. Subtribal relationships in Cymbidieae (Epidendroideae, Orchidaceae) reveal a new subtribe, Dipodiinae, based on plastid and nuclear coding DNA. *Phytotaxa* **246**, 37 (2016).
27. Nauheimer, L., Schley, R. J., Clements, M. A., Micheneau, C. & Nargar, K. Australasian orchid biogeography at continental scale: molecular phylogenetic insights from the Sun Orchids (*Thelymitra*, Orchidaceae). *Mol. Phylogenet. Evol.* **127**, 304–319 (2018).
28. Li, Y.-X. *et al.* Phylogenomics of Orchidaceae based on plastid and mitochondrial genomes. *Mol. Phylogenet. Evol.* **139**, 106540 (2019).
29. Pérez-Escobar, O. A. *et al.* Recent origin and rapid speciation of Neotropical orchids in the world's richest plant biodiversity hotspot. *New Phytol.* **215**, 891–905 (2017).
30. Whitten, W. M., Neubig, K. M. & Williams, N. H. Generic and subtribal relationships in neotropical Cymbidieae (Orchidaceae) based on *matK/ycf1* plastid data. *Lankesteriana* **13**, 375–392 (2014).
31. Pérez-Escobar, O. A. *et al.* The origin and diversification of the hyperdiverse flora in the Chocó biogeographic region. *Front. Plant Sci.* **10**, 1328 (2019).
32. Bogarín, D. *et al.* Phylogenetic comparative methods improve the selection of characters for generic delimitations in a hyperdiverse Neotropical orchid clade. *Sci. Rep.* **9**, 1–17 (2019).
33. Górniak, M., Paun, O. & Chase, M. W. Phylogenetic relationships within Orchidaceae based on a low-copy nuclear coding gene, *Xdh*: Congruence with organellar and nuclear ribosomal DNA results. *Mol. Phylogenet. Evol.* **56**, 784–795 (2010).
34. Salazar, G. A., Chase, M. W., Soto Arenas, M. A. & Ingrouille, M. Phylogenetics of Cranichideae with emphasis on Spiranthinae (Orchidaceae, Orchidoideae): evidence from plastid and nuclear DNA sequences. *Am. J. Bot.* **90**, 777–795 (2003).
35. Bone, R. E., Cribb, P. J. & Buerki, S. Phylogenetics of Eulophiinae (Orchidaceae: Epidendroideae): evolutionary patterns and implications for generic delimitation: evolutionary patterns in Eulophiinae. *Bot. J. Linn. Soc.* **179**, 43–56 (2015).
36. Pérez-Escobar, O. A. *et al.* Andean mountain building did not preclude dispersal of lowland epiphytic orchids in the Neotropics. *Sci. Rep.* **7**, 4919 (2017).
37. Salazar, G. A. *et al.* Phylogenetic systematics of subtribe Spiranthinae (Orchidaceae: Orchidoideae: Cranichideae) based on nuclear and plastid DNA sequences of a nearly complete generic sample. *Bot. J. Linn. Soc.* **186**, 273–303 (2018).
38. Martins, A. *et al.* From tree tops to the ground: reversals to terrestrial habit in *Galeandra* orchids (Epidendroideae: Catasetinae). *Mol. Phylogenet. Evol.* **127**, 952–960 (2018).
39. Nunes, C. *et al.* More than euglossines: the diverse pollinators and floral scents of Zygopetalinae orchids. *Sci. Nat.* **104**, 92 (2017).
40. Pansarin, L., Pansarin, E., Gerlach, G. & Sazima, M. The natural history of *Cirrhaea* and the pollination system of Stanhopeinae (Orchidaceae). *Int. J. Plant Sci.* <https://doi.org/10.1086/697997> (2018).
41. Cisternas, M. A. *et al.* Phylogenetic analysis of Chloraeinae (Orchidaceae) based on plastid and nuclear DNA sequences. *Bot. J. Linn. Soc.* **168**, 258–277 (2012).
42. Ramirez, S. R., Roubik, D. W., Skov, C. & Pierce, N. E. Phylogeny, diversification patterns and historical biogeography of Euglossine orchid bees (Hymenoptera: Apidae). *Biol. J. Linn. Soc.* **100**, 552–572 (2010).
43. Van Der Cingel, N. A. *An Atlas of Orchid Pollination: European Orchids* (CRC Press, Boca Raton, 2001).
44. Weitemier, K. *et al.* Hyb-Seq: combining target enrichment and genome skimming for plant phylogenomics. *Appl. Plant Sci.* **2**, 1400042 (2014).
45. Pridgeon, A. M., Cribb, P. J., Chase, M. W. & Rasmussen, F. N. *Genera Orchidacearum: Vol. 5. Epidendroideae (Part Two)* (Oxford University Press, Oxford, 2009).
46. Chomiccki, G. *et al.* The velamen protects photosynthetic orchid roots against UV-B damage, and a large dated phylogeny implies multiple gains and losses of this function during the Cenozoic. *New Phytol.* **205**, 1330–1341 (2015).
47. Ramirez, S. R., Gravendeel, B., Singer, R. B., Marshall, C. R. & Pierce, N. E. Dating the origin of the Orchidaceae from a fossil orchid with its pollinator. *Nature* **448**, 1042–1045 (2007).
48. Freudenstein, J. V. & Chase, M. W. Phylogenetic relationships in Epidendroideae (Orchidaceae), one of the great flowering plant radiations: progressive specialization and diversification. *Ann. Bot.* **115**, 665–681 (2015).
49. Pérez-Escobar, O. A. *Molecular Phylogenetics, Evolution of Sexual Systems and Historical Biogeography of Darwin's Favorite Orchids (Catasetinae) and Swan Orchids (Cynoches Lindl.)* (Ludwig-Maximilians Universität, München, 2016).
50. Soltis, D. E. & Kuzoff, R. K. Discordance between nuclear and chloroplast phylogenies in the heuchera group author (Saxifragaceae). *Evolution* **49**, 727–742 (1995).
51. van der Niet, T. & Peter Linder, H. Dealing with incongruence in the quest for the species tree: a case study from the orchid genus *Satyrium*. *Mol. Phylogenet. Evol.* **47**, 154–174 (2008).
52. Pérez-Escobar, O. A., Balbuena, J. A. & Gottschling, M. Rumbling orchids: how to assess divergent evolution between chloroplast endosymbionts and the nuclear host. *Syst. Biol.* **65**, 51–65 (2016).
53. Frago-Martínez, I. *et al.* A pilot study applying the plant Anchored Hybrid Enrichment method to New World sages (*Salvia* subgenus *Calosphace*; Lamiaceae). *Mol. Phylogenet. Evol.* **117**, 124–134 (2017).
54. Léveillé-Bourret, E., Starr, J. R., Ford, B. A., Moriarty Lemmon, E. & Lemmon, A. R. Resolving rapid radiations within angiosperm families using anchored phylogenomics. *Syst. Biol.* **67**, 94–112 (2018).
55. Zhang, R. *et al.* Exploration of plastid phylogenomic conflict yields new insights into the deep relationships of Leguminosae. *Syst. Biol.* **69**, 613–622 (2020).

56. Mark Whitten, W., Williams, N. H., Dressler, R. L., Gerlach, G. & Pupulin, F. Generic relationships of Zygopetalinae (Orchidaceae: Cymbidiaceae): combined molecular evidence. *Lankesteriana* **5**, 87–107 (2005).
57. Neubig, K. M., Williams, N. H., Whitten, W. M. & Pupulin, F. Molecular phylogenetics and the evolution of fruit and leaf morphology of *Dichaea* (Orchidaceae: Zygopetalinae). *Ann. Bot.* **104**, 457–467 (2009).
58. Pupulin, F. In *Genera Orchidacearum, Vol. 5, Epidendroideae (Part Two)* (eds Pridgeon, A. M. *et al.*) 456–546 (Oxford University Press, Oxford, 2009).
59. Bogarín, D. *et al.* Pollination of *Trichosalpinx* (Orchidaceae: Pleurothallidinae) by biting midges (Diptera: Ceratopogonidae). *Bot. J. Linn. Soc.* **186**, 510–543 (2018).
60. Blanco, M. A. & Barboza, G. Pseudocopulatory pollination in *Lepanthes* (Orchidaceae: Pleurothallidinae) by fungus gnats. *Ann. Bot.* **95**, 763–772 (2005).
61. Damon, A. *et al.* A survey of pollination in remnant orchid populations in Soconusco, Chiapas, Mexico. *Trop. Ecol.* **48**, 1–14 (2007).
62. Policha, T. *et al.* Disentangling visual and olfactory signals in mushroom-mimicking *Dracula* orchids using realistic three-dimensional printed flowers. *New Phytol.* **210**, 1058–1071 (2016).
63. Pridgeon, A. M., Solano, R. & Chase, M. W. Phylogenetic relationships in Pleurothallidinae (Orchidaceae): combined evidence from nuclear and plastid DNA sequences. *Am. J. Bot.* **88**, 2286–2308 (2001).
64. Karremans, A. P. *et al.* Phylogenetic reassessment of *Acianthera* (Orchidaceae: Pleurothallidinae). *Harvard Pap. Bot.* **21**, 171–187 (2016).
65. Bogarín, D., Karremans, A. P. & Fernández, M. Genus-level taxonomical changes in the *Lepanthes* affinity (Orchidaceae, pleurothallidinae). *Phytotaxa* **340**, 128–136 (2018).
66. Karremans, A. P. Genera Pleurothallidarum: an updated phylogenetic overview of Pleurothallidinae. *Lankesteriana* **16**, 219–241 (2016).
67. Damián, A., Mitidieri, N. & Chiron, G. A taxonomic synopsis of *Acianthera* (Orchidaceae: Pleurothallidinae) in Peru, including two new species. *An. del Jard. Bot. Madrid* **75**, 1–21 (2018).
68. Luer, C. A. A systematic method of classification of the pleurothallidinae versus a strictly phylogenetic method. *Selbyana* **23**, 57–110 (2002).
69. Stern, W. W. L., Pridgeon, A. & Luer, C. Stem structure and its bearing on the systematics of Pleurothallidinae (Orchidaceae). *Bot. J. Linn. Soc.* **91**, 457–471 (1985).
70. Jost, L. & Shepard, A. Two new species of *Teagueia* (Orchidaceae: Pleurothallidinae) from east-central Ecuador. *Lankesteriana* **11**, 9–14 (2011).
71. Luer, C. A. Icones Pleurothallidarum VIII. Systematics of *Lepanthopsis*, *Octomeria* subgenus *Pleurothallopsis*, *Restrepiella*, *Restrepiopsis*, *Salpistele*, and *Teagueia*. Addenda to *Platystele*, *Porroglossum*, and *Scaphosepalum*. *Monogr. Syst. Bot. Missouri Bot. Gard.* **39**, 1–161 (1991).
72. Luer, C. A. Icones Pleurothallidarum XXIV. A First Century Of New Species of *Stelis* of Ecuador part one. Addenda to *Lepanthes* of Ecuador. Addenda to *Barbosella*, *Dracula*, *Dresslerella*, *Lepanthopsis*, *Platystele*, *Pleurothallis*, *Restrepia*, *Scaphosepalum*, *Teagueia*. *Monogr. Syst. Bot. Missouri Bot. Gard.* **88**, 1–122 (2002).
73. Luer, C. A. Icones Pleurothallidarum VII. Systematics of *Platystele* (Orchidaceae). *Monogr. Syst. Bot. Missouri Bot. Gard.* **38**, 1–115 (1990).
74. Karremans, A. P. *et al.* Phylogenetic reassessment of *Specklinia* and its allied genera in the pleurothallidinae (Orchidaceae). *Phytotaxa* **272**, 1–36 (2016).
75. Doyle, J. & Doyle, J. Genomic plant DNA preparation from fresh tissue-CTAB method. *Phytochem Bull* **19**, 11–15 (1987).
76. Neubig, K. M. *et al.* in *DNA Banking for the 21st Century: Proceedings of the US Workshop on DNA Banking* (eds Applequist, W. & Campbell, L.) 81–112 (William L. Brown Center, Missouri Botanical Garden, 2014).
77. Bolger, A. M., Lohse, M. & Usadel, B. Trimmomatic: a flexible trimmer for Illumina sequence data. *Bioinformatics* **30**, 2114–2120 (2014).
78. Bushnell, B. BBMap. Available at <https://sourceforge.net/projects/bbmap/> (2017).
79. Bushnell, B., Rood, J. & Singer, E. BBMerge—accurate paired shotgun read merging via overlap. *PLoS ONE* **12**, e0185056 (2017).
80. Magoc, T. & Salzberg, S. L. FLASH: fast length adjustment of short reads to improve genome assemblies. *Bioinformatics* **27**, 2957–2963 (2011).
81. Bankevich, A. *et al.* SPAdes: a new genome assembly algorithm and its applications to single-cell sequencing. *J. Comput. Biol.* **19**, 455–477 (2012).
82. Chevreux, B., Wetter, T. & Suhai, S. Genome sequence assembly using trace signals and additional sequence information. In *German Conference on Bioinformatics* **99**, 45–56 (Citeseer, 1999).
83. Cock, P. J. A., Grünig, B. A., Paszkiewicz, K. & Pritchard, L. Galaxy tools and workflows for sequence analysis with applications in molecular plant pathology. *PeerJ* **1**, e167 (2013).
84. Parakhia, M. V. *et al.* Draft genome sequence of the endophytic bacterium *Enterobacter* spp. MRI, isolated from drought tolerant plant (*Butea monosperma*). *Indian J. Microbiol.* **54**, 118–119 (2014).
85. Ward, J. A., Ponnala, L. & Weber, C. A. Strategies for transcriptome analysis in nonmodel plants. *Am. J. Bot.* **99**, 267–276 (2012).
86. Li, H. *et al.* The sequence alignment/map format and SAMtools. *Bioinformatics* **25**, 2078–2079 (2009).
87. Jin, J. J. *et al.* GetOrganelle: a fast and versatile toolkit for accurate de novo assembly of organelle genomes. *Genome Biol.* **21**, 241 (2020).
88. Tillich, M. *et al.* GeSeq—versatile and accurate annotation of organelle genomes. *Nucleic Acids Res.* **45**, W6–W11 (2017).
89. Chan, C. X. & Ragan, M. A. Next-generation phylogenomics. *Biol. Direct* **8**, 3 (2013).
90. Katoh, K. & Standley, D. M. MAFFT multiple sequence alignment software version 7: improvements in performance and usability. *Mol. Biol. Evol.* **30**, 772–780 (2013).
91. Stamatakis, A. RAXML version 8: a tool for phylogenetic analysis and post-analysis of large phylogenies. *Bioinformatics* **30**, 1312–1313 (2014).
92. Drummond, A. J. & Rambaut, A. BEAST: Bayesian evolutionary analysis by sampling trees. *BMC Evol. Biol.* **7**, 214 (2007).
93. Xiang, X. G. *et al.* Biogeographical diversification of mainland Asian *Dendrobium* (Orchidaceae) and its implications for the historical dynamics of evergreen broad-leaved forests. *J. Biogeogr.* **43**, 1310–1323 (2016).
94. Kosakovsky Pond, S. L., Frost, S. D. W. & Muse, S. V. HyPhy: Hypothesis testing using phylogenies. *Bioinformatics* **21**, 676–679 (2005).

Acknowledgements

We would like to thank Esteban Urrea for helping with the bioinformatics pipelines. We thank Norris Williams and the late Mark Whitten (University of Florida) for collecting and preparing the specimens. Kurt Neubig from Southern Illinois University provided the sequences of 11 new samples. We also thank Janice Valencia for critical feedback on the paper, Juan David Pineda Cardenas for advising about computational resources used through EAFIT and Juan Carlos Correa for computational advices at BIOS. Martha Charitonidou provided constructive feedback on figure design. The University of Costa Rica provided access to the genetic material for the projects

B8257 and B6140. Finally, we would like to thank IDEA WILD for supporting with photographic equipment and Sociedad Colombiana de Orquideología for supporting M. A. Serna-Sánchez with a grant to conduct her undergraduate studies. C.F.H received a PhD fellowship from FAPESP (11/08308-9, 13/19124-1). O.A.P.E. is supported by the Swiss Orchid Foundation and the Sainsbury Orchid Fellowship at the Royal Botanic Gardens, Kew. A.A. acknowledges financial support from the Swedish Research Council (2019-05191), the Swedish Foundation for Strategic Research (FFL15-0196) and the Royal Botanic Gardens, Kew.

Author contributions

M.A.S.S., O.A.P.E., and T.A. designed research; O.A.P.E., M.A.S.S., T.A., C.F.H. and A.A. generated new data; M.A.S.S., O.A.P.E., M.F.T.J., A.C.A.Y., J.E.A.G. and S.D. performed all analyses; O.A.P.E., D.B., M.W.C., M.A.S.S., S.D. and T.A. wrote the manuscript, with contributions from all authors.

Competing interests

The authors declare no competing interests.

Additional information

Supplementary Information The online version contains supplementary material available at <https://doi.org/10.1038/s41598-021-83664-5>.

Correspondence and requests for materials should be addressed to O.A.P.-E. or T.A.

Reprints and permissions information is available at www.nature.com/reprints.

Publisher's note Springer Nature remains neutral with regard to jurisdictional claims in published maps and institutional affiliations.



Open Access This article is licensed under a Creative Commons Attribution 4.0 International License, which permits use, sharing, adaptation, distribution and reproduction in any medium or format, as long as you give appropriate credit to the original author(s) and the source, provide a link to the Creative Commons licence, and indicate if changes were made. The images or other third party material in this article are included in the article's Creative Commons licence, unless indicated otherwise in a credit line to the material. If material is not included in the article's Creative Commons licence and your intended use is not permitted by statutory regulation or exceeds the permitted use, you will need to obtain permission directly from the copyright holder. To view a copy of this licence, visit <http://creativecommons.org/licenses/by/4.0/>.

© The Author(s) 2021, corrected publication 2021